

Nirva Patel

[linkedin.com/in/nirva-patel-6621b1179](https://www.linkedin.com/in/nirva-patel-6621b1179) | (551) 404 9116 | nirvap21@gmail.com | Hackensack, NJ

Education

Master Of Architecture	2023 – 2025 (expected)
<i>New Jersey Institute of Technology, Newark, NJ</i>	GPA: 3.60
Bachelor Of Architecture	2018 - 2023
<i>Veer Narmad South Gujarat University, Surat, India</i>	GPA: 7.9/10

Experience

Intern Architect | APURVA AMIN ARCHITECTS, Ahmedabad **Dec 2021 - May 2022**

- Worked on the design of several commercial, residential, Institutional projects, including site inspections field work and the creation of comprehensive architectural plans and sketches, Prepared set of working drawings. I provided unique concept solutions and kept all blueprint files up to date records and documents.
- Drawing review for various consultants. Meeting, Communication, and collaboration with other professional Architects; additional responsibilities as assigned.

Freelance Work **2023**

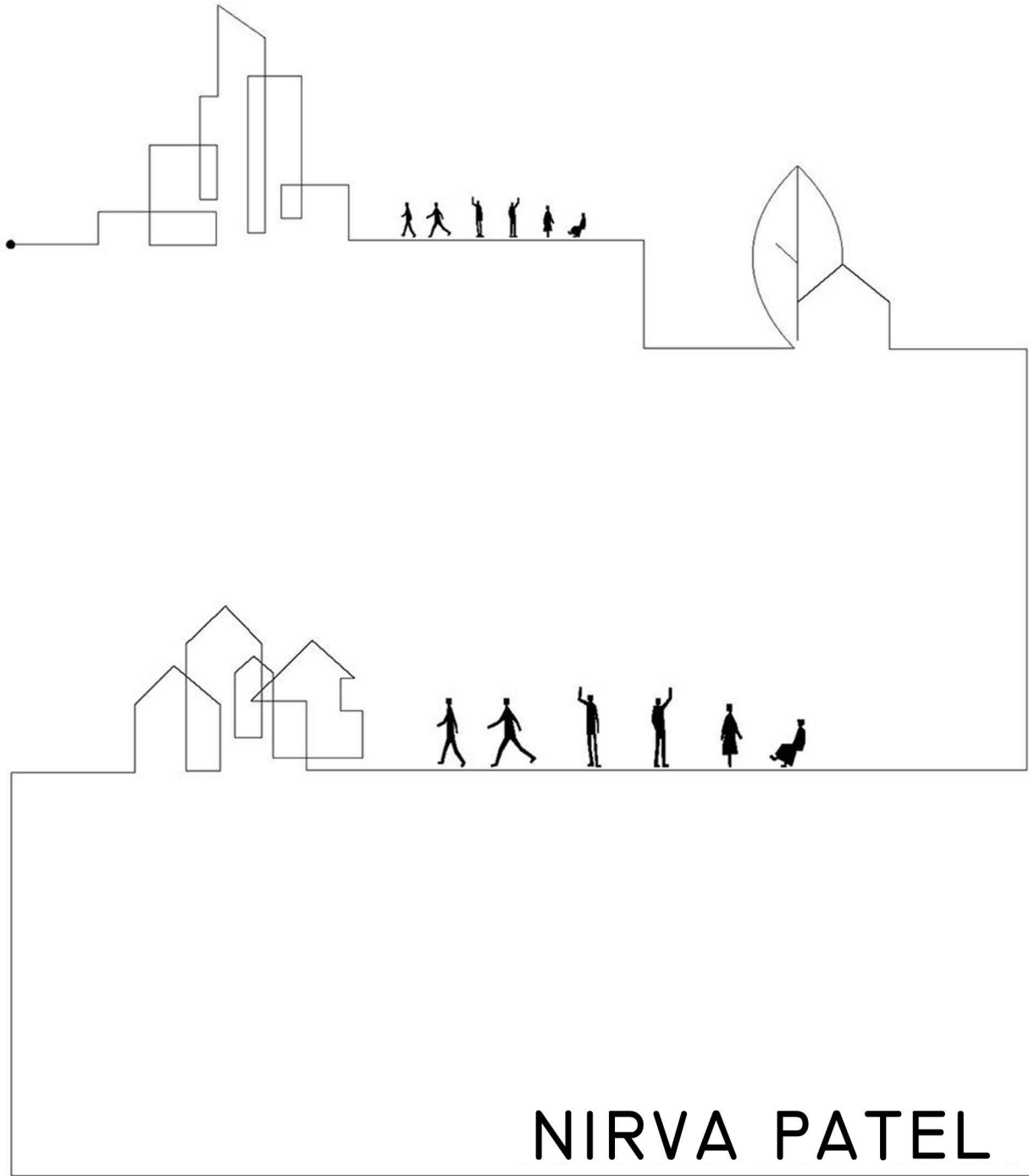
- Conceptualized and executed detailed architectural sketches and realistic 3D visualizations for luxury residential development.

Skills & abilities

- **Modelling Software:** Revit, Rhino, AutoCAD, Sketchup, 3Ds max
- **Editing Software:** Adobe Photoshop, Adobe Illustrator
- **Rendering Software:** Lumion, VRay, Enscape, Twinmotion
- **Basics:** Laser Cutting, 3D Printing, Hand sketching, Manual drafting, Microsoft office
- **Artificial Intelligence:** Midjourney, Veras
- **Soft:** Competent, interpersonal, Adept, Meticulous, Ambitious, Structured, Effective Communicator, keen sense of responsibility.

Extracurricular and achievements

Logo Design: Designed a logo design for Bergen Catholic High School's robotics team in New Jersey. My design was chosen as the institute's team logo	2022
ANDC Trophy (Winner): Our team stood 1 st in the Annual NASA Design Competition.	2020
LIK Trophy: At national level, our entry was among top 5.	2019
RUBENS Trophy: At national and zonal level, our entry was among top 5.	2019



NIRVA PATEL
P O R T F O L I O



NIRVA PATEL

D.O.B. - 04 / 21 / 2000

CONTACT NUM. - +1 (551) 404 9116

COLLEGE - J. ROBERT AND BARBARA A. HILLIER
COLLEGE OF ARCHITECTURE AND DESIGN,
NJIT, NEWARK, NJ.

NIRVAP21@GMAIL.COM

EDUCATION

M.ARCH : J. ROBERT AND BARBARA A. HILLIER
COLLEGE OF ARCHITECTURE AND DESIGN,
NJIT, NEWARK, NJ.

B.ARCH : Faculty of Architecture, S.C.E.T, Surat

EXPERIENCE AND ACHIVEMENTS

2021-22: **ARCHITECTURAL INTERNSHIP**
(Intern architect at Apurva
Amin Architects, Ahmedabad)

2020-21: **ANDC**
(Citation, 63rd nasa)

2019-20: **REUBENS TROPHY**
(Special mention, 62nd nasa)

UCP
(62nd nasa zonal)

LIK
(Special mention, 62nd nasa)

CASESTUDY AND DOCUMENTIONS

2022-23: **SUZLON ONE EARTH, PUNE**
(Design Thesis Case Study)

2021-22: **NATIONAL STUDY TOUR**
(Agra,Uttrar Pradesh)

2019-20: **NATIONAL STUDY TOUR**
(Jaisalmer,Rajasthan)

2018-19: **RURAL STUDY PROGRAMME**
(Nargol,Gujarat)

SOFT SKILLS AND EXPERTISE


Quick learner and team player


Effective Communication


Multi-tasking and problem solving


Time management


SOFTWARE


 ● ● ● ● ●
Revit


 ● ● ● ● ●
Auto-cad


 ● ● ● ● ●
Rhino


 ● ● ● ● ●
Lumion


 ● ● ● ● ●
Photoshop


 ● ● ● ● ●
Sketchup

 ● ● ● ● ●
Lightroom

 ● ● ● ● ●
Twinmotion

 ● ● ● ● ●
Office

 ● ● ● ● ●
Illustrator

 ● ● ● ● ●
Veras


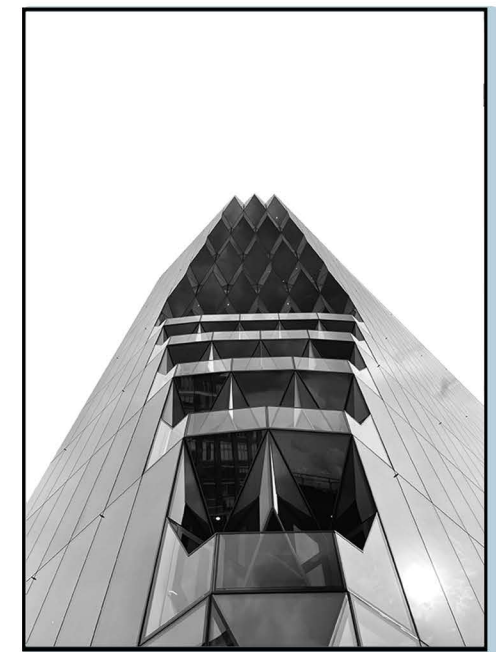
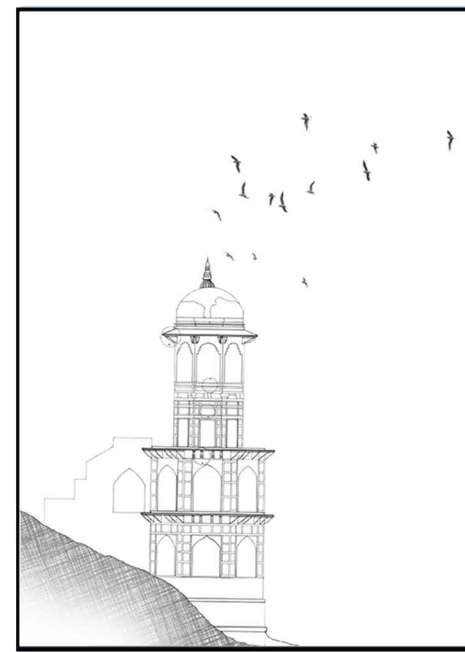
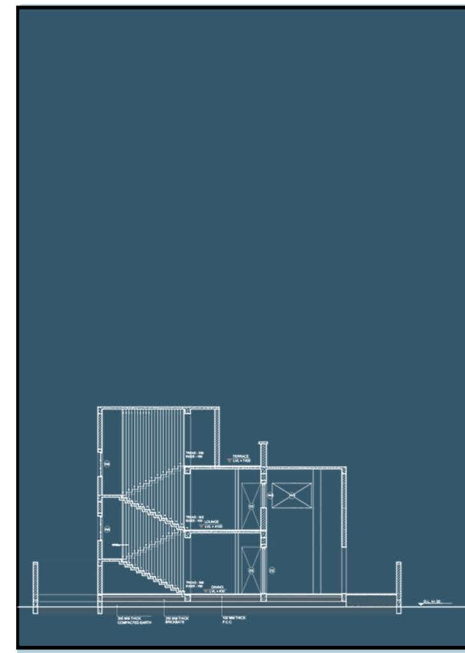
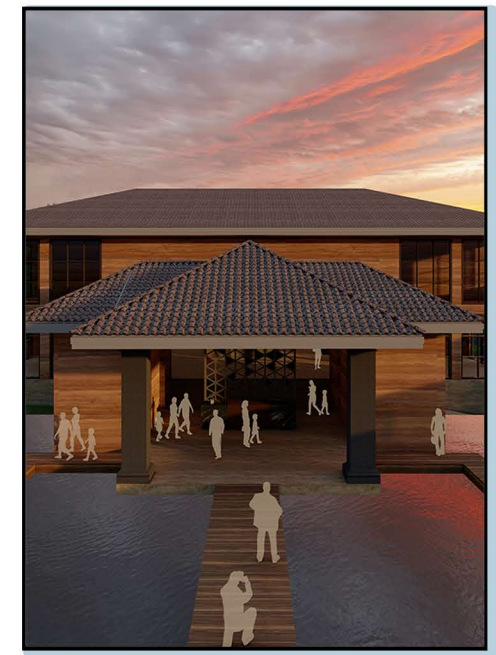
 ● ● ● ● ●
Midjourney

Table Of Content





HUDSON YARDS PHASE-II (WESTERN YARDS)

In New York City's Hudson Yards Phase II, this project aims to create a mixed-use development addressing housing affordability. It combines affordable housing, retail, offices, and educational spaces with a central green park. The design features retail and dining on the ground level, affordable residences above, and a central park with amenities for all ages. Apartments offer views of the park or the Hudson River, optimized for sunlight. Accessibility is ensured through interconnected pathways, while strategic building placement allows for natural ventilation and solar penetration.

SWOT Analysis

S

- Riverside location
- No private vehicle allowed
- Partially connected with Highline

W

- Contours
- Every Side Road Connection
- Mid to highrise on southern side block sunlight

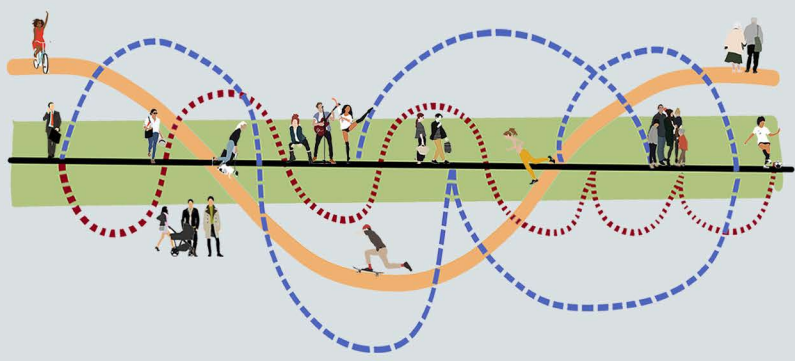
O

- Connected with major road
- Good Air ventilation
- No highrise on northside
- View of Hudson River
- Part of a Landmark of City

T

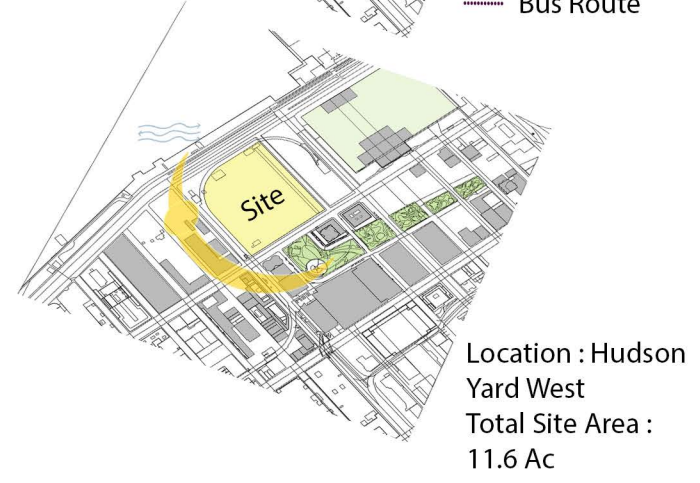
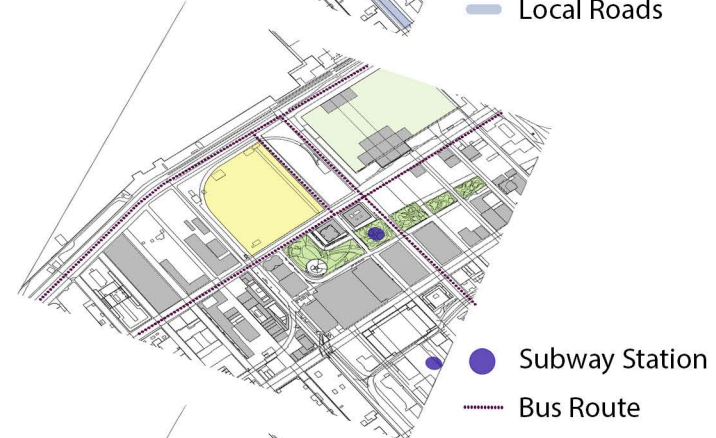
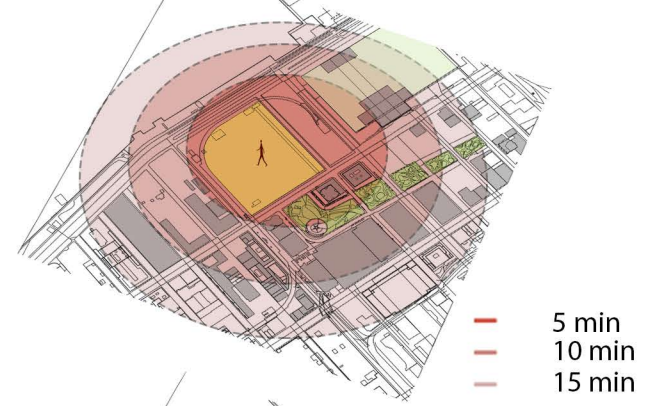
- The possibility of flooding is a concern, potentially impacting the area's infrastructure and safety measures

Concept

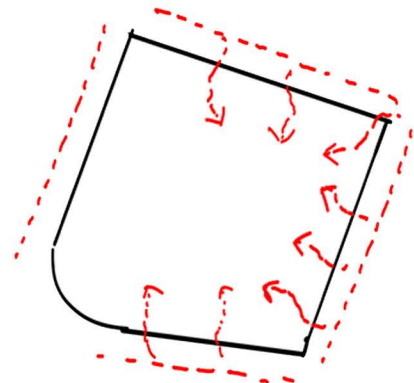


The Riverside location embraces an axial zoning plan, orienting all spaces toward the river to maximize scenic views and enhance connectivity. At its heart lies a Central Public Spine, providing accessible pathways for all, fostering community engagement and social interaction. This spine seamlessly extends to a tranquil green space, ensuring continuous connectivity throughout the site while promoting environmental sustainability and a harmonious urban environment.

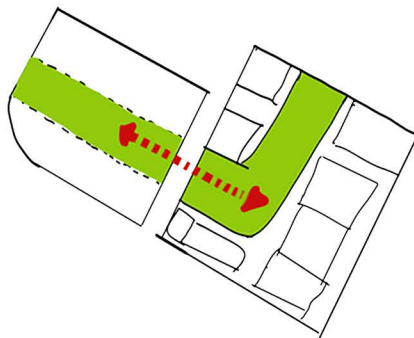
Site Analysis



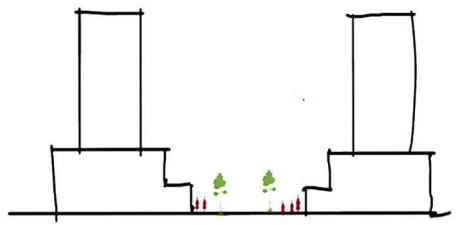
Design Strategies



Pedestrian access is facilitated from all four sides of the site, promoting ease of movement and ensuring inclusivity and connectivity within the area.



Linking the green spaces of Phase I to Phase II involves creating pathways that seamlessly connect the two phases, enhancing the development's green infrastructure.

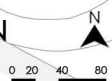


Retail spaces are situated on the ground level, accompanied by public plazas, to optimize foot traffic in a compact and inviting setting, fostering vibrant community engagement.

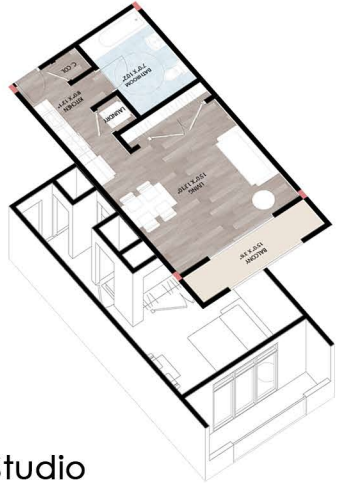
Site Section AA'



- LEGENDS:
1. PUBLIC PARK
 2. SCHOOL
 3. SCHOOL PLAY-GROUND
 4. OFFICES + RESIDENTIAL
 5. RETAIL + RESIDENTIAL
 6. PUBLIC PLAZA
 7. EMPHITHEATRE
 8. WATER PLAZA
 9. SLOPED LAWN



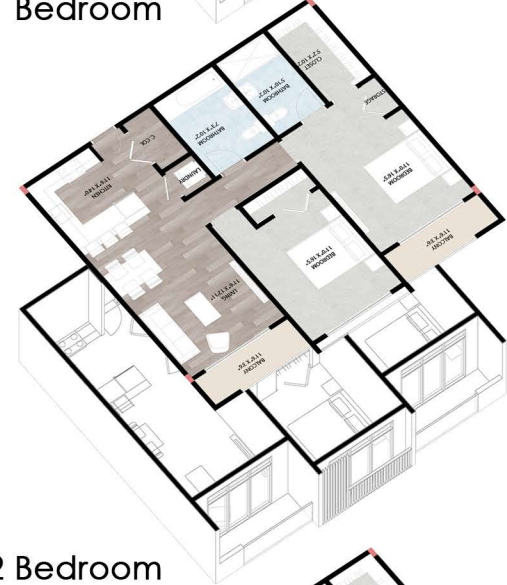
Site Layout



Studio



1 Bedroom



2 Bedroom



3 Bedroom

South building Cluster Layout



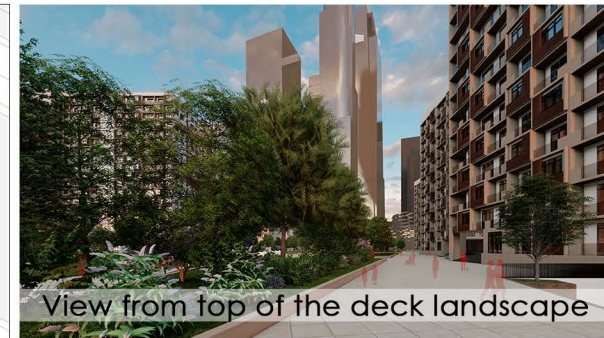
North building Cluster Layout



3D Views



View from top of the deck landscape



View from top of the deck landscape



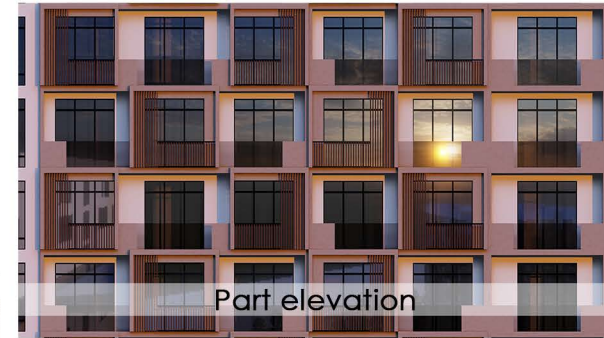
View from plaza



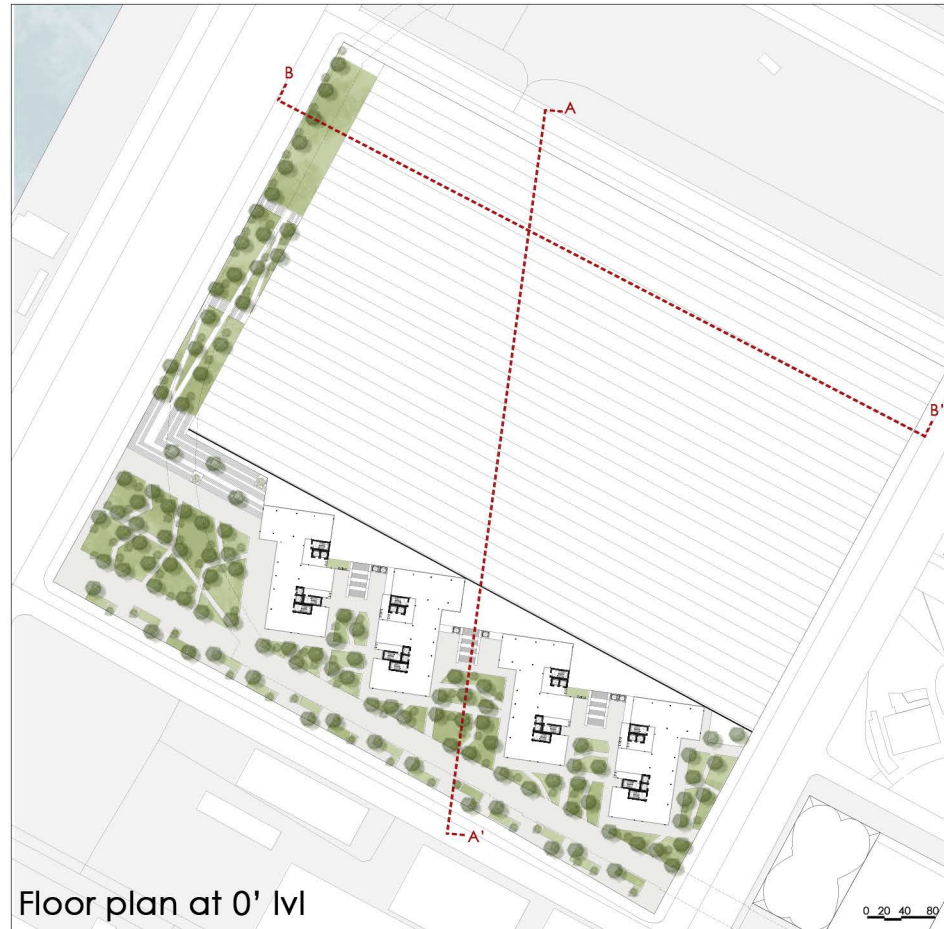
View from 30th Street landscape



Steps to top of the deck



Part elevation



Floor plan at 0' lvl

0 20 40 80



Floor plan at 30' lvl

0 20 40 80



Elevation from 12th Av



Elevation from 11th Av



Section AA'



Section BB'



JIO CORPORATE HEADQUARTERS

The Reliance Corporate Headquarters in Ahmedabad reimagines the modern workplace, reflecting the city's dynamic lifestyle where work, leisure, and living merge seamlessly. It serves as a symbol of business ideals and identity in today's digital economy, emphasizing flexibility, connectivity, and sustainability. Designed with foresight, the headquarters includes provisions for future expansion to accommodate the evolving needs of the company. This flexible approach ensures scalability and adaptability, allowing for seamless growth and development while maintaining the integrity of the workspace. With integrated amenities and a balanced environment for productivity and well-being, it sets a new standard for corporate excellence in Ahmedabad.

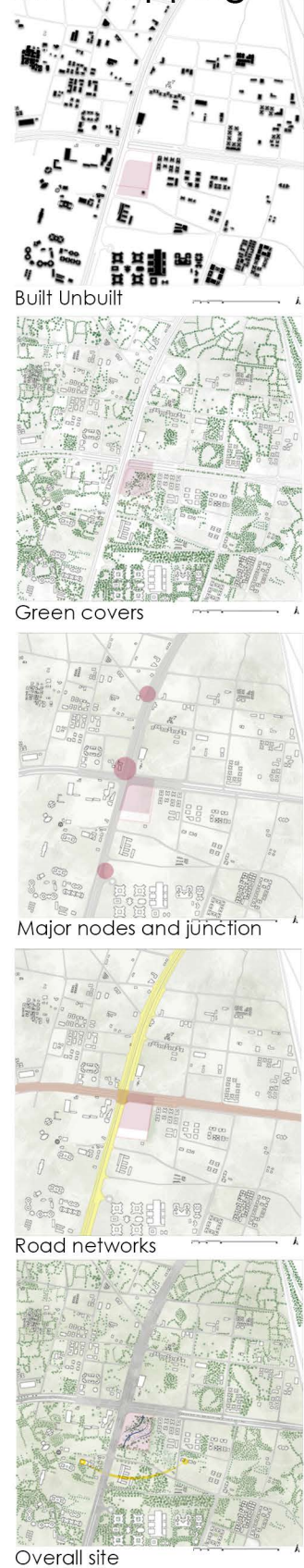
Site Introduction



The tech sector has experienced significant growth over the past decade, with a notable increase in employee numbers and job opportunities. Ahmedabad, the business and commerce capital of Gujarat, is a key tourism destination and home to numerous prominent enterprises. It has also become a major technology hub in the region, attracting recent graduates to kickstart their careers in the thriving IT and software industries.

<h3>STRENGTH</h3> <p>The site, linked by two main roads, is easily accessible. Nearby corporate buildings and institutes can contribute to a significant crowd pool.</p>	<h3>WEEKNESS</h3> <p>Due to high FSI, the built-up area lacks sufficient open interactive spaces, with no nearby recreational parks.</p>	<h3>OPPURTUNITY</h3> <p>Significant growth in commercial and IT sectors presents an opportunity to enhance the ecosystem and promote green spaces for people to enjoy.</p>	<h3>THREAT</h3> <p>The major Outer Ring Road to the north causes significant noise pollution on-site. Nearby large structures without green-space will lead to increased summer temperatures.</p>
--	--	--	---

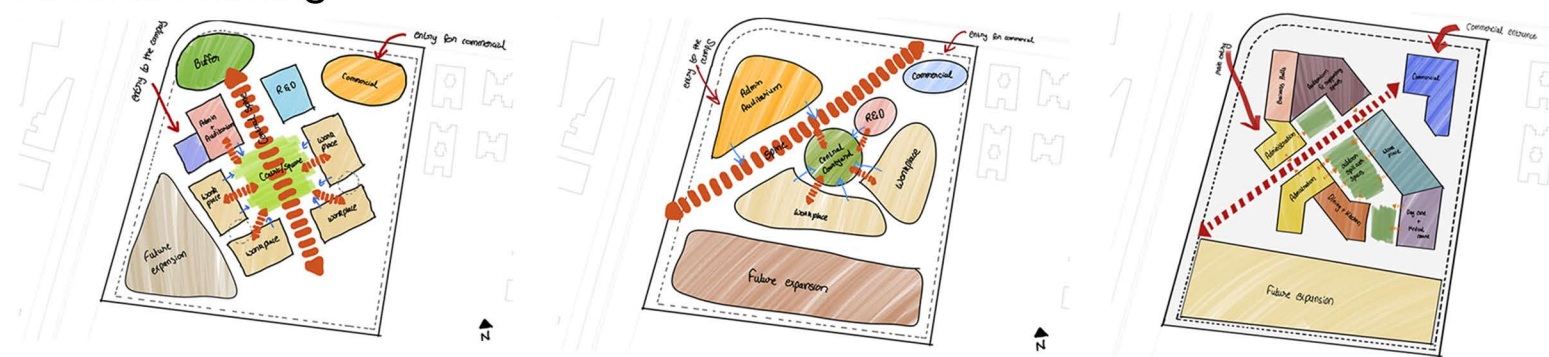
Site Mapping



Program Derivation

ADMINISTRATION	WORKSPACE	SUPPORTING SPACES	RETAIL
Reception & Waiting Lounge	Workplace	Cafeteria / Dining hall	Reliance Jio Mart
Business Halls	Heads office	Gym / Fitness	
VIP Lounge	Meeting rooms	Child day care	
Multipurpose Hall	Brainstorming rooms	Medical room	
Central server	Videoconferencing rooms	Library	
	Brainstorming rooms		
	Board rooms		

Initial Site zoning



Site layout

LEGENDS

- Drop off
- Reception and waiting area
- Exhibition hall
- Exhibition support space
- Business halls
- Business halls support spaces
- Auditorium waiting
- Auditorium
- Reception and waiting area
- R & D Labs
- Classroom
- Meeting room
- Pantry
- Medical room
- Daycare
- Dining
- Kitchen
- Sunken court
- Reliance jio commercial
- Service station
- Future expansion proposal

Design Ideas

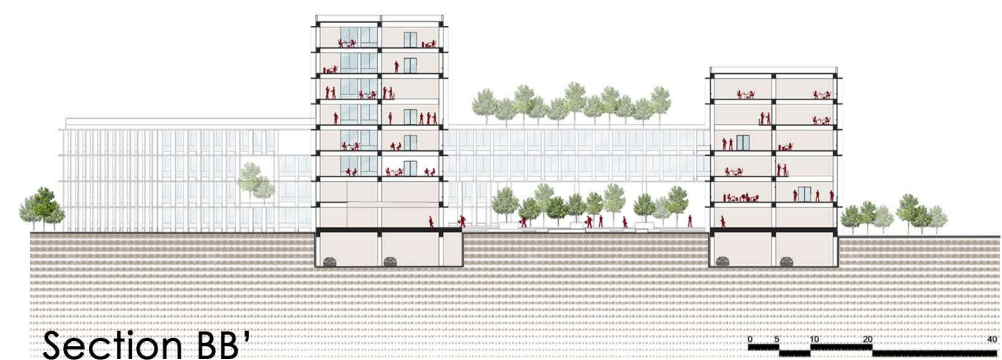
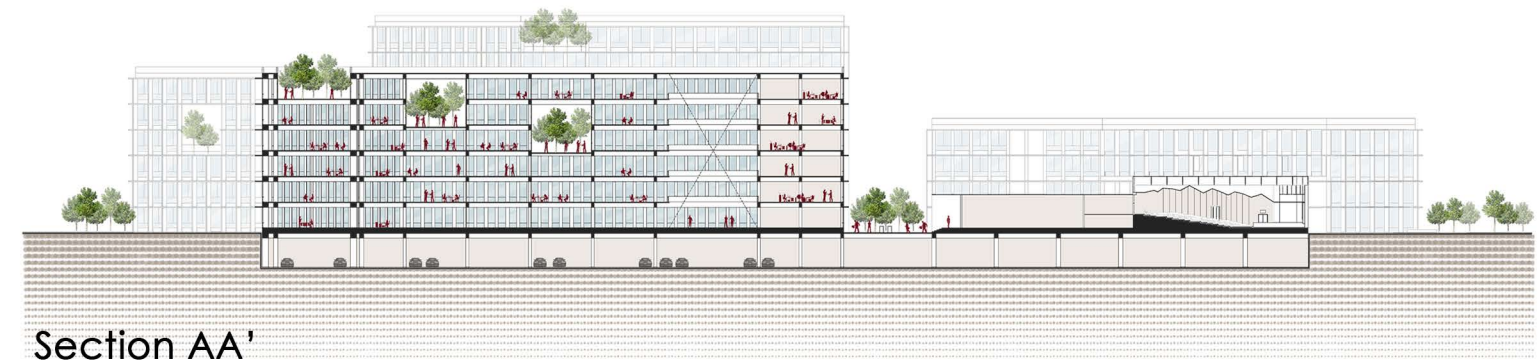
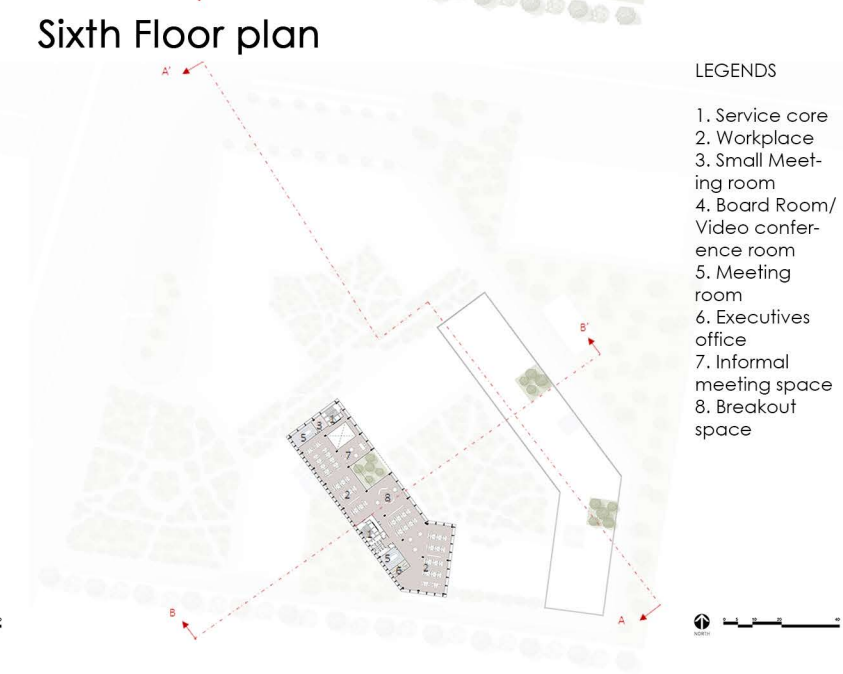
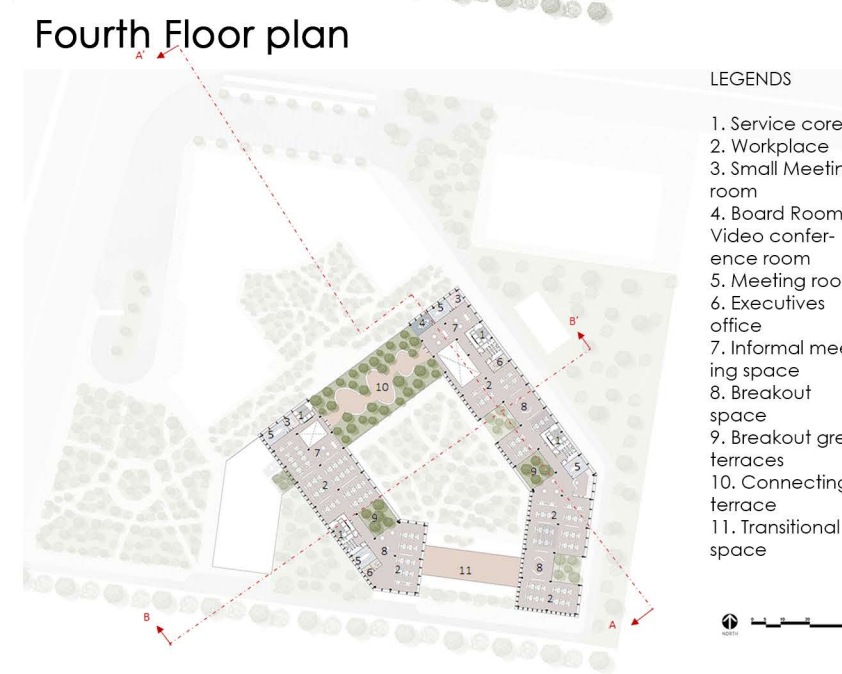
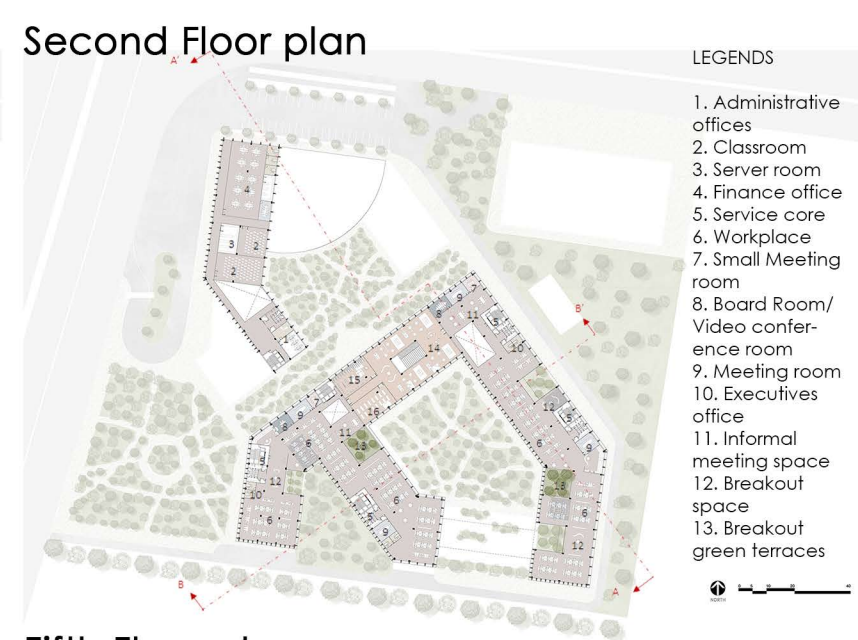
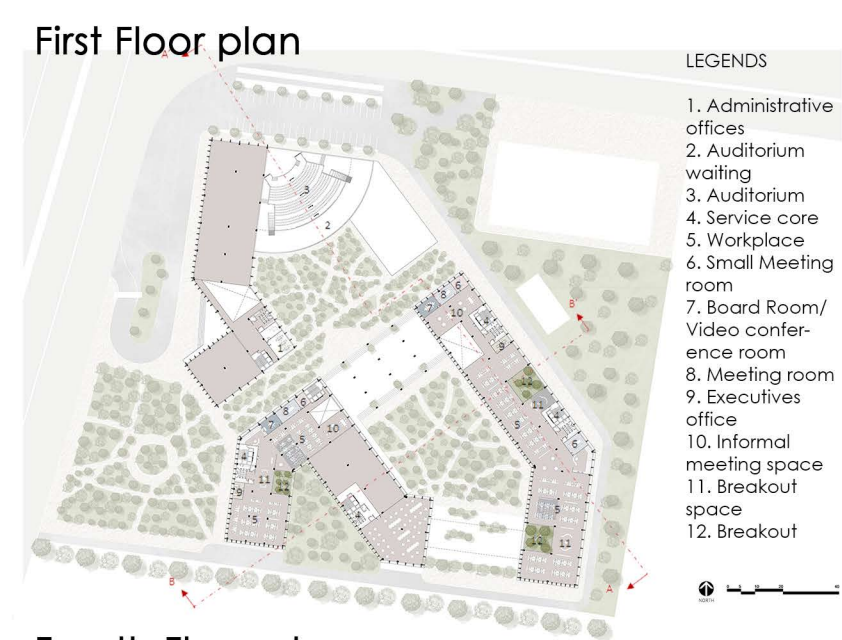
CONCEPT	DESIGN STRATEGIES / IDEAS
Physical connectivity	Pathways+ Movement
Visual connectivity	Transparency
Private meeting/workplace	Opaqueness
Discussion + Informal interaction	In-between spaces
Engaging + Interactive	Sense of play
Evoking nature	Forms + Patterns

The Big Idea



Reactivating the lost work-life balance and maintaining the identity by **merging nature into human space** to create a more pleasant and productive environment for employees.

The concept derived from **meeting spaces** to be focal points to inculcate more **interaction** amongst the users and these common spaces are **extroverted** so that they are connected to nature.

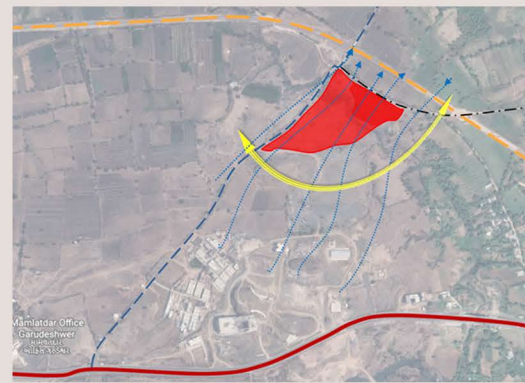




UNITY OASIS RESORT

Nestled within the scenic beauty of Kevadia, Gujarat, the resort embodies a harmonious blend of recreation, cultural exchange, and environmental stewardship. It offers a plethora of amenities, from luxurious accommodations to recreational facilities, all seamlessly integrated with the surrounding landscape. Embracing sustainability, the resort utilizes local materials and construction techniques, ensuring minimal environmental impact while celebrating the region's cultural heritage. Through its architectural concept, guests are invited on a journey that connects them with nature, enveloping them in a timeless sense of tranquility and well-being, while fostering a vibrant exchange of ideas and experiences.

Site and connectivity



- 20m wide main road
- 9.5m wide secondary road
- 6m wide tertiary road
- Railway track

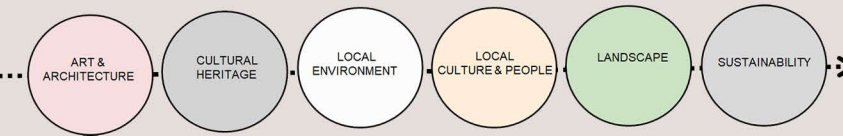
SWOT analysis

- Rich tourism resources Cultural and Historic Heritage Tourism Products
- Well, connected with international tourist site i.e., Statue of Unity
- Poor Transportation Facilities lack of integrated transportation network.
- Poor Conditions of roads .
- Diversity of tourism product and offers variety of tourism.
- Job creation and benefiting the local community.
- Region faces security threats Ecological and Environmental imbalances

Conceptual idea



The journey is facilitated by an architectural concept designed to expose the guest to nature in various ways, while maintaining a sense of protection and basic principles of shelter. The idea is derived with close consideration to the site and local resources. A sense of timelessness can be achieved through the utilisation of local construction techniques and the incorporation of elements from the landscape. Quality of wellness and relaxation can be achieved by getting close to nature with the 5 sense.



Master plan



- LEGENDS:
1. DROP OFF POINT
 2. ENTRY REFLECTIVE COURT
 3. RECEPTION
 4. WAITING AREA
 5. BUGGY CAR DROP OFF AND PICK UP
 6. CAFÉ
 7. OUTDOOR CAFÉ
 8. RESTAURANT
 9. OUTDOOR RESTRO
 10. BANQUET HALL AND PARTY LAWN
 11. POOL
 12. INDOOR GAMES AREA
 13. GYM
 14. OUTDOOR PLAYAREA
 15. SERVICE ENTRANCE
 16. BACK OF THE HOUSE AND STAF QUARTERS
 17. CONNECTING BRIDGE
 18. PAVALIONS
 19. WELLNESS AND MENTAL HEALTH
 20. STUDIO ROOMS
 21. FAMILY VILLA
 22. RESIDENCE VILLA

TOTAL BUILT UP: 16,720 SQ,M

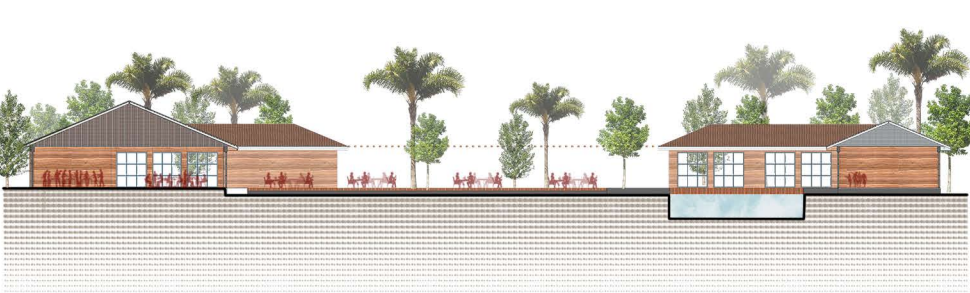
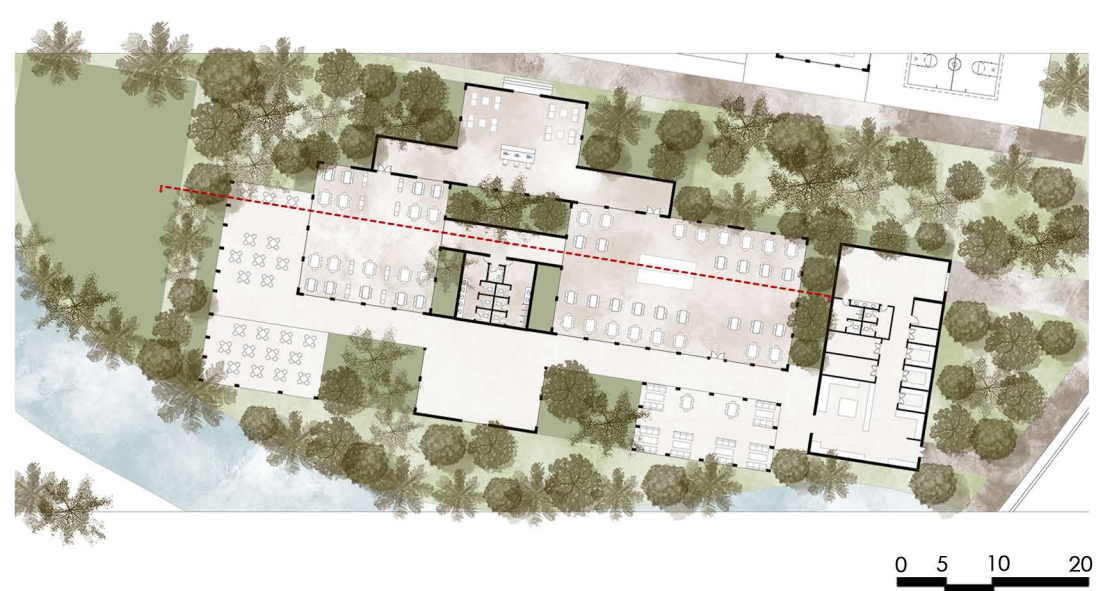
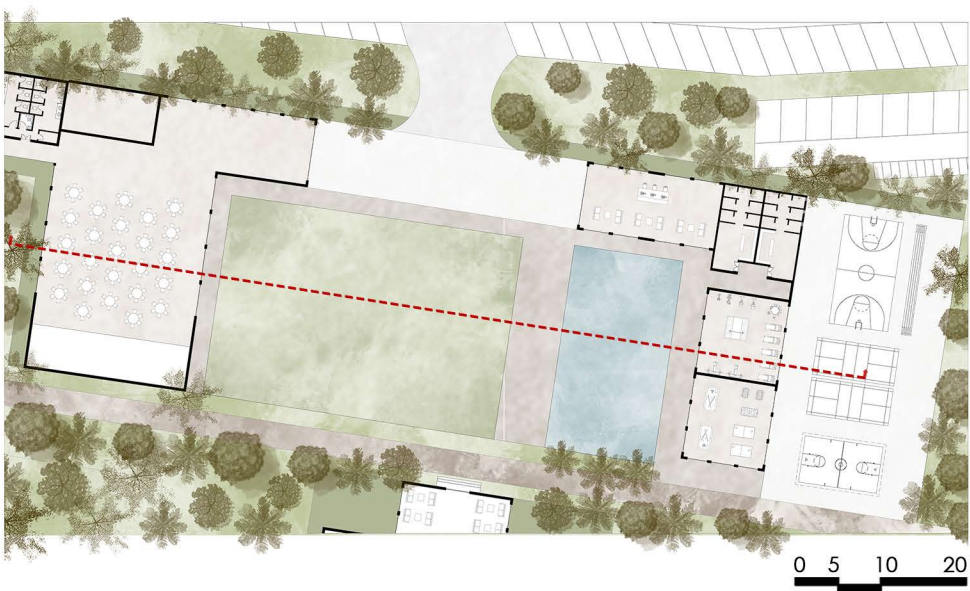
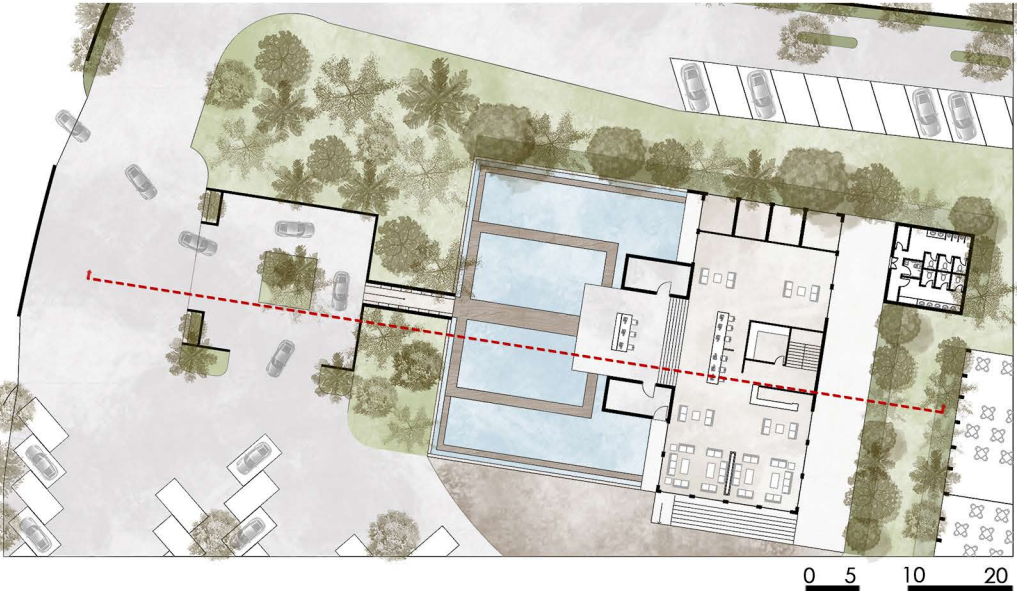


Site Section BB'

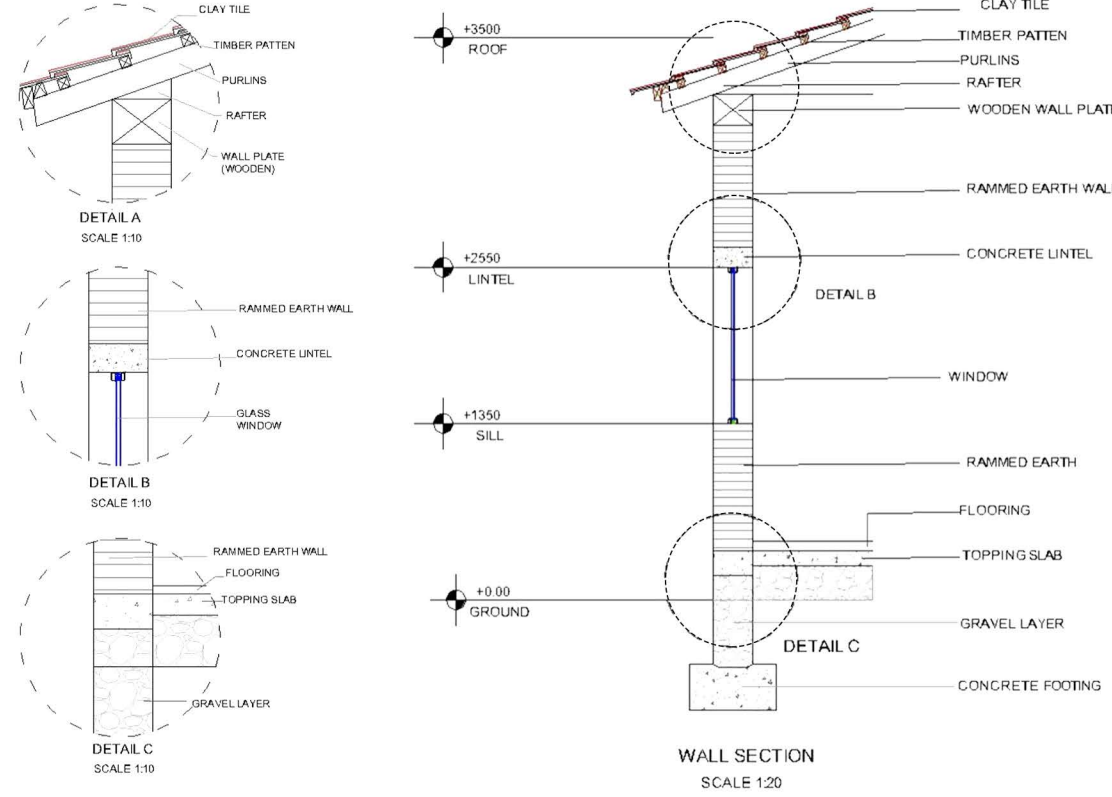
Reception and Arrival/Departure - Part Plan

Banquet and Active Physical - Part Plan

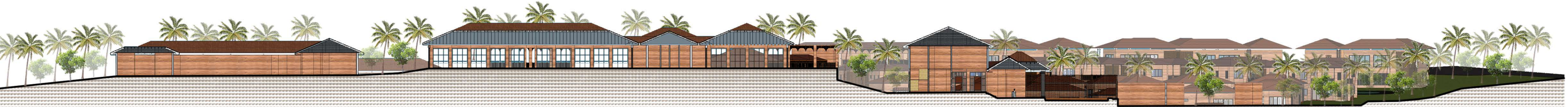
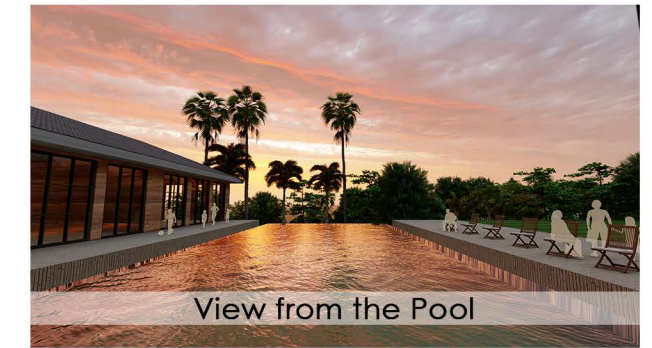
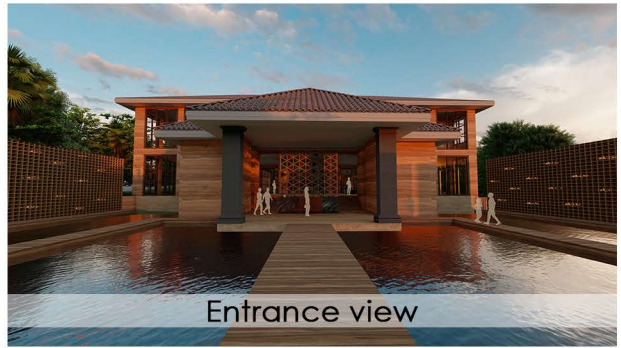
Food and Beverage - Part Plan



Wall Section



3D Views



Site Section AA'



VADODARA ART DISTRICT

Urban Vertical Studio's design for the Vadodara Art District intricately weaves functionality with the surrounding urban context. Nestled near Sur-Sagar Lake, this district seamlessly integrates an arts institution, residential housing, and the Maharani Girls School within a unified master plan. With a focus on enhancing livability and fostering community spaces in Vadodara's historic quarters, this project epitomizes the studio's commitment to thoughtful architectural design and thorough environmental analysis.

SWOT Analysis

S

- Site is located on the main road.
- Site is surrounded by major landmarks.
- The site land is largely flat.

W

- Narrow roads on the edge creates traffic.
- School & temple surrounding the site create congestion & chaos during specific time.

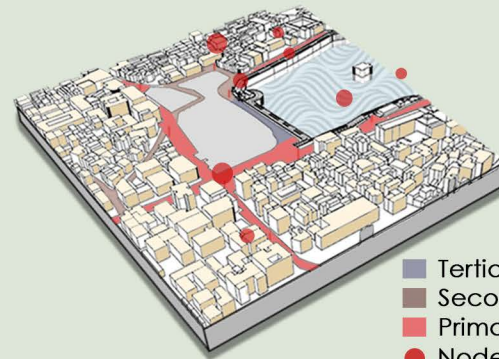
O

- Site is being in proximity of the lake, provides a serene view and allied functions.

T

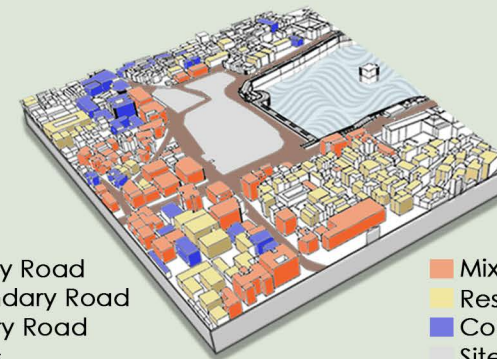
- The site is being in a busy area faces a lot of noise from surrounding.
- Traffic on street may lead to congestion.

Roads & Nodes



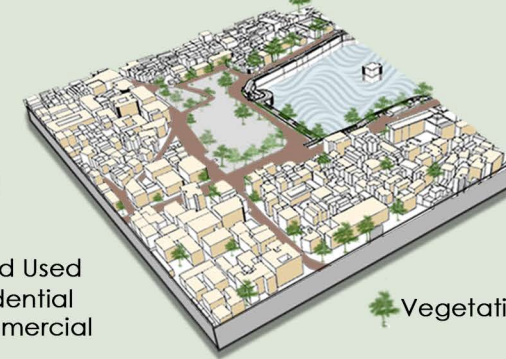
- Tertiary Road
- Secondary Road
- Primary Road
- Nodes

Landuse Map



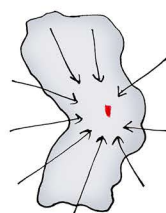
- Mixed Used
- Residential
- Commercial Site

Vegetation Map



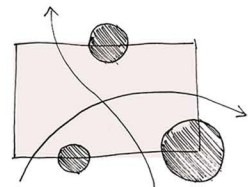
■ Vegetation

Vision for project



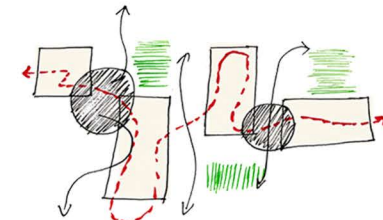
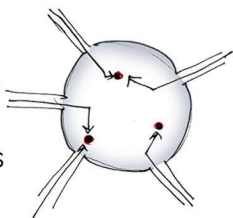
To attract people from all over the state to generate association with the art and culture to increase its value.

Conceptual zoning

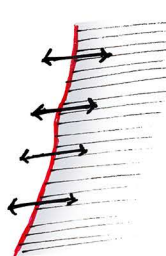


Single block with interlinking element.

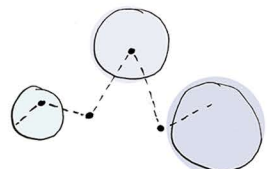
Designing an invitation to mix instead of imposing mixing. To draw people in by providing points where both tourist and local would like to come.



Breaking the mass into different blocks to break the flow and create space of interest.



To open up the lake edge to allow people to use it and to create public spaces for recreation.



Creating public hotspots and arranging blocks around these spaces.

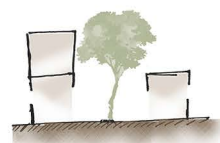
Design concerns



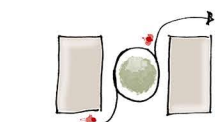
Interactive spaces



Shared spaces



Low rise & axis development



wide & easy circulation



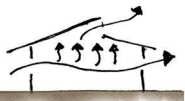
Plantation on edges



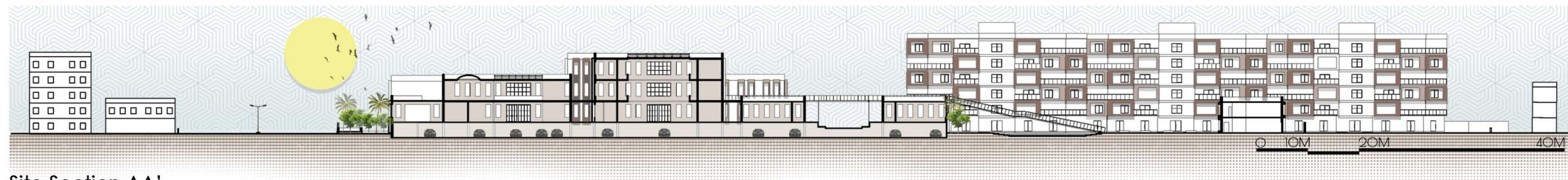
Visual connectivity



Natural light



Natural ventilation



Site Section AA'



Master Layout

0 10M 20M 40M





Sculpture Courtyard



Entrance Courtyard



Roof-Top Cafe



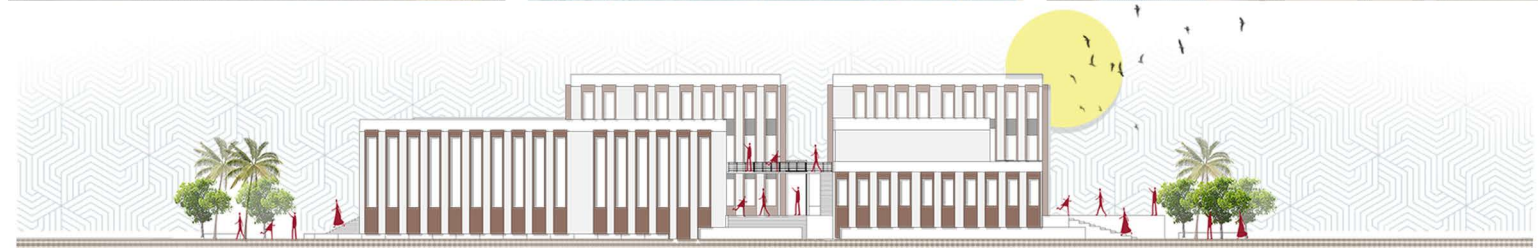
Exhibition Rooms



Linked Pathways



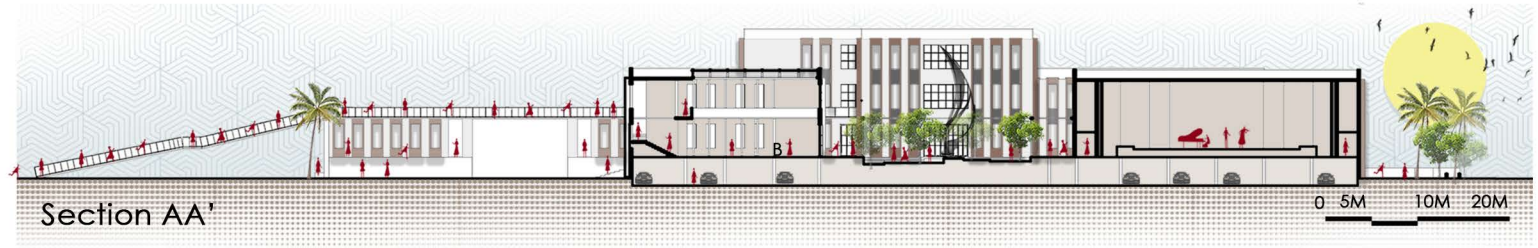
Connecting Bridge



South Elevation



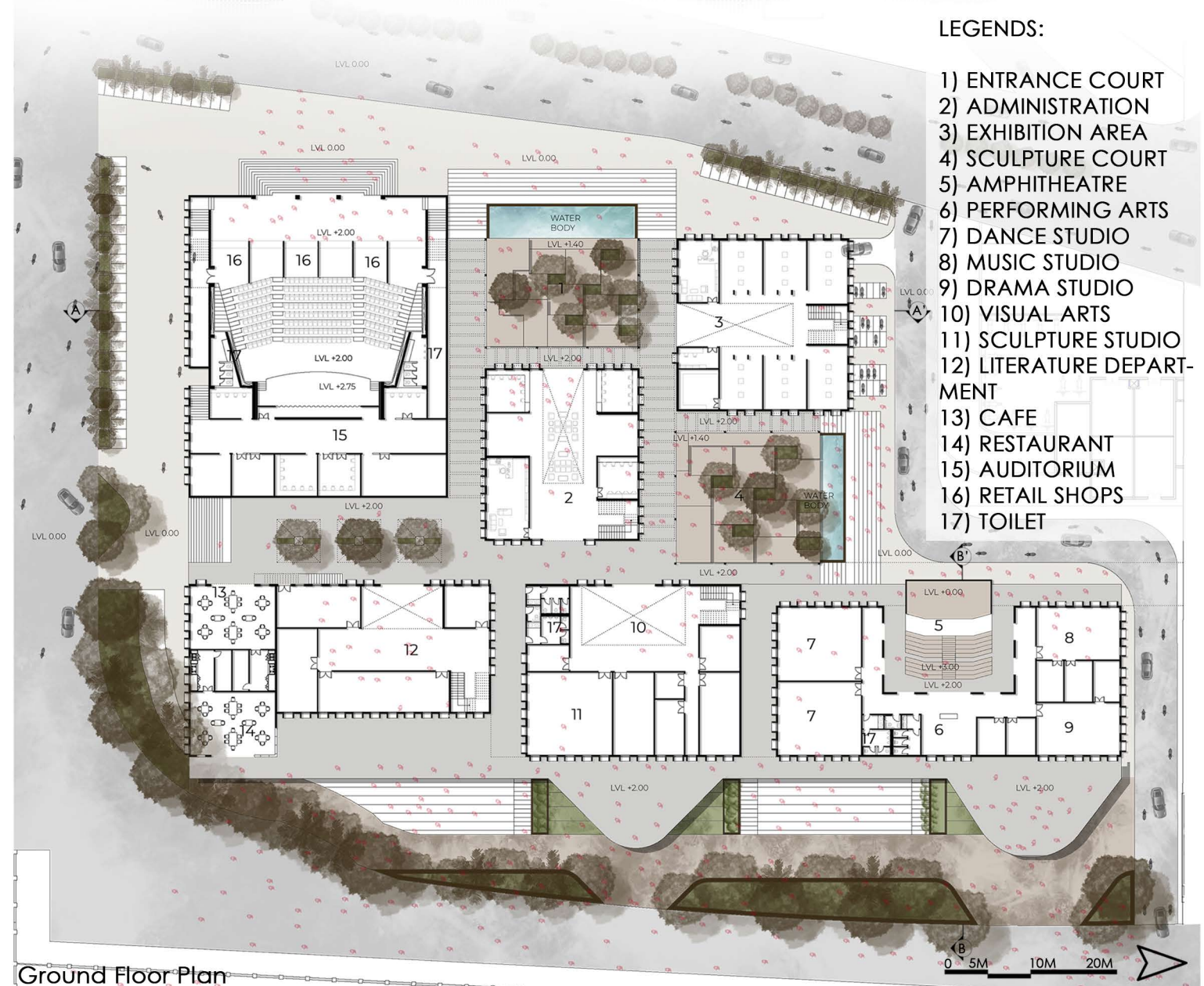
East Elevation



Section AA'



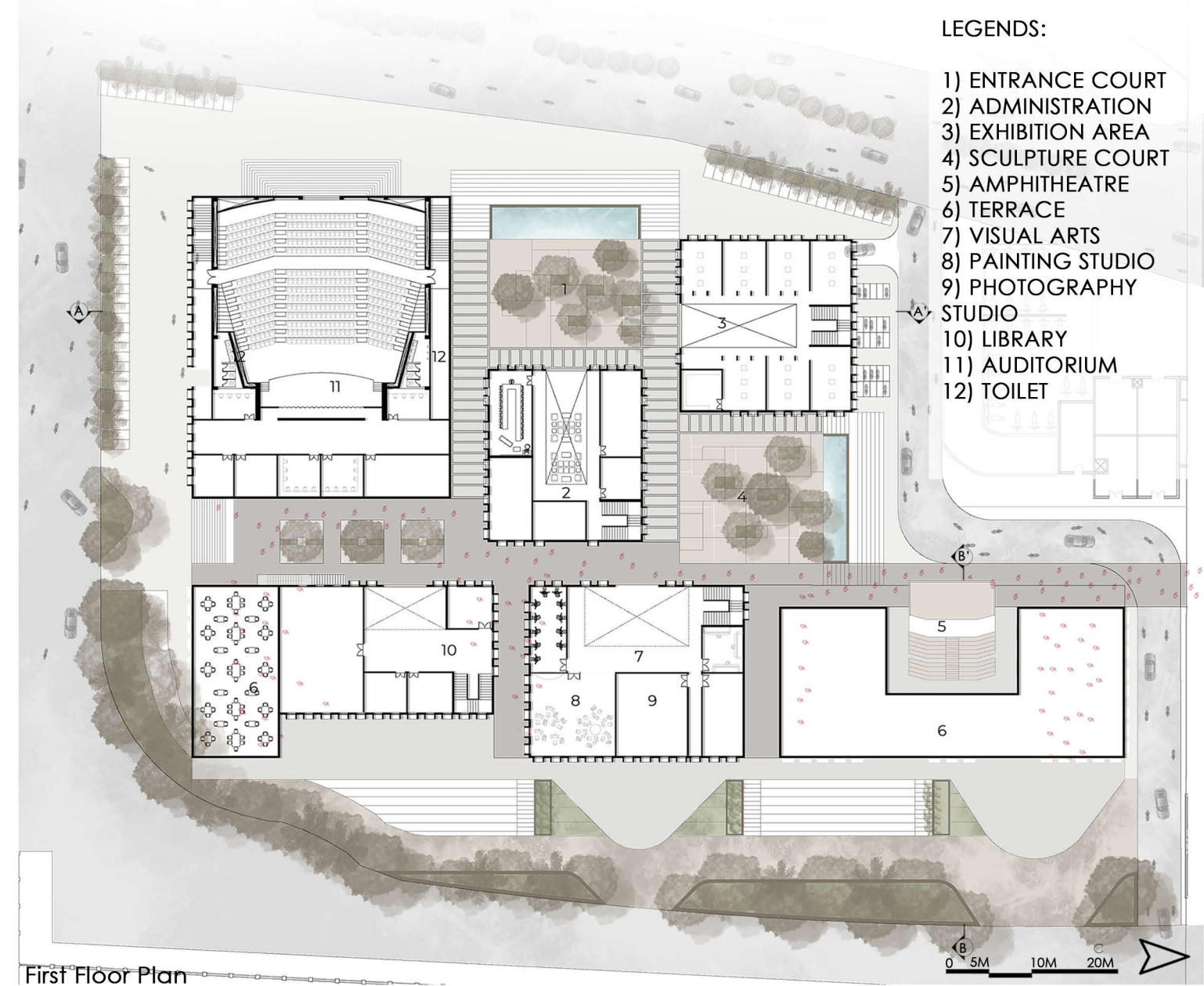
Site Section BB'



Ground Floor Plan

LEGENDS:

- 1) ENTRANCE COURT
- 2) ADMINISTRATION
- 3) EXHIBITION AREA
- 4) SCULPTURE COURT
- 5) AMPHITHEATRE
- 6) PERFORMING ARTS
- 7) DANCE STUDIO
- 8) MUSIC STUDIO
- 9) DRAMA STUDIO
- 10) VISUAL ARTS
- 11) SCULPTURE STUDIO
- 12) LITERATURE DEPARTMENT
- 13) CAFE
- 14) RESTAURANT
- 15) AUDITORIUM
- 16) RETAIL SHOPS
- 17) TOILET

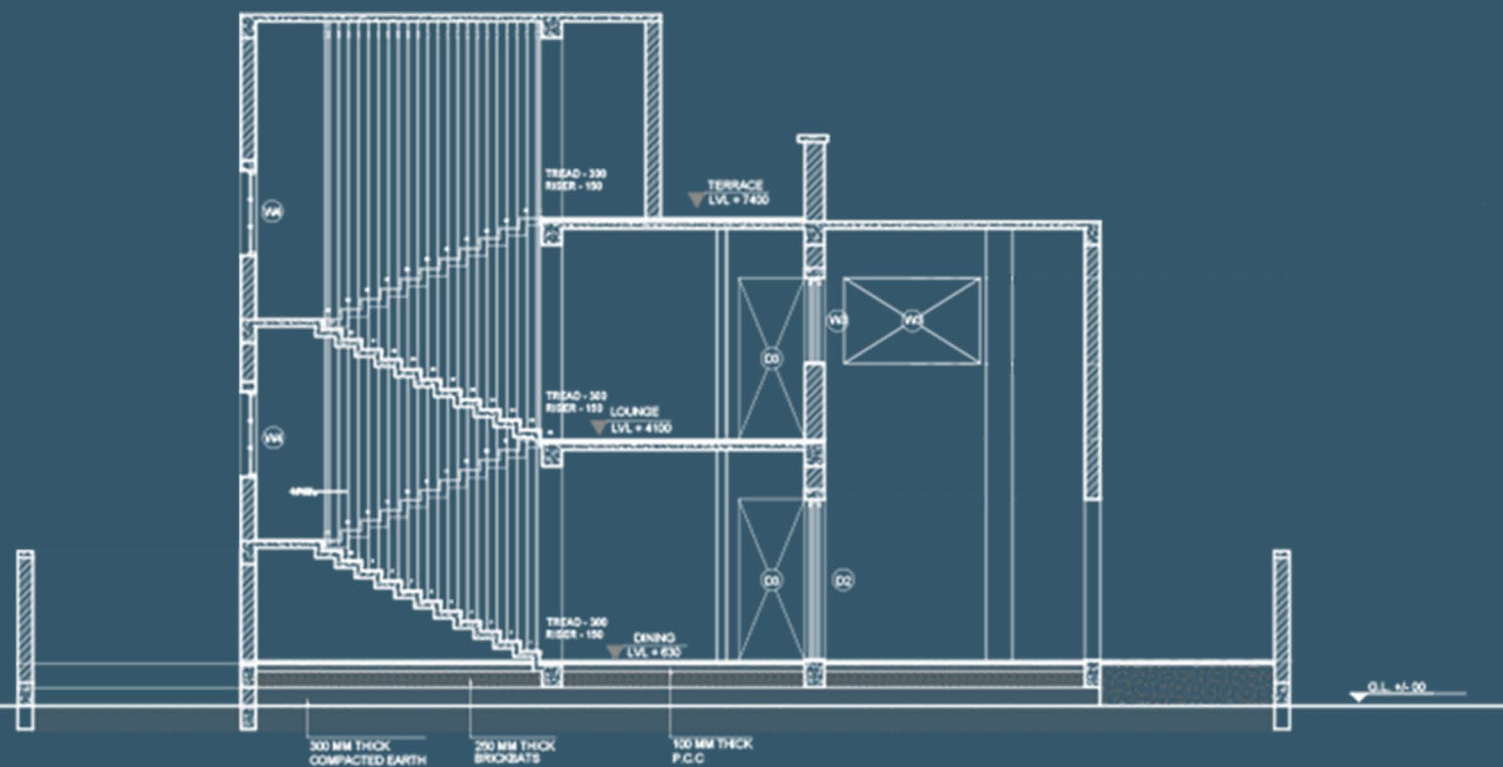


First Floor Plan

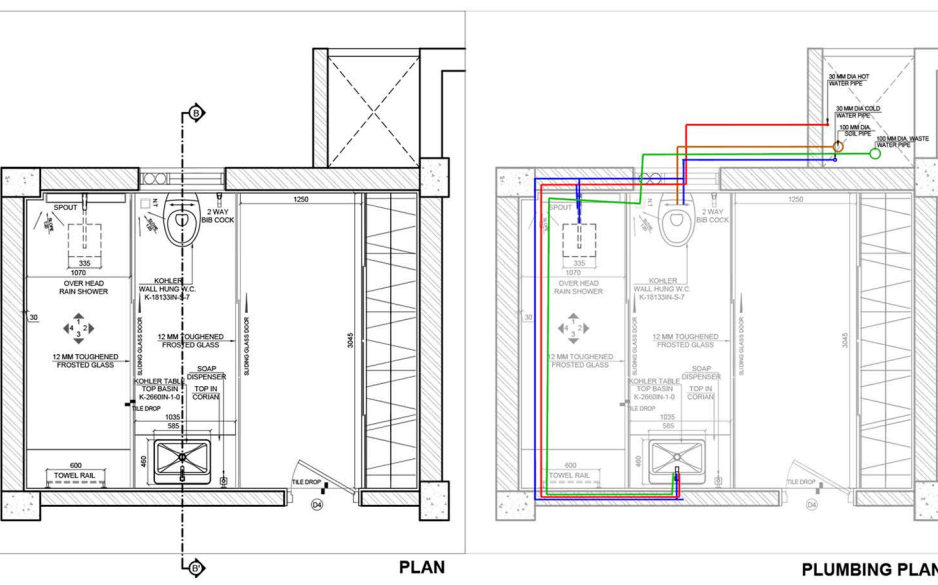
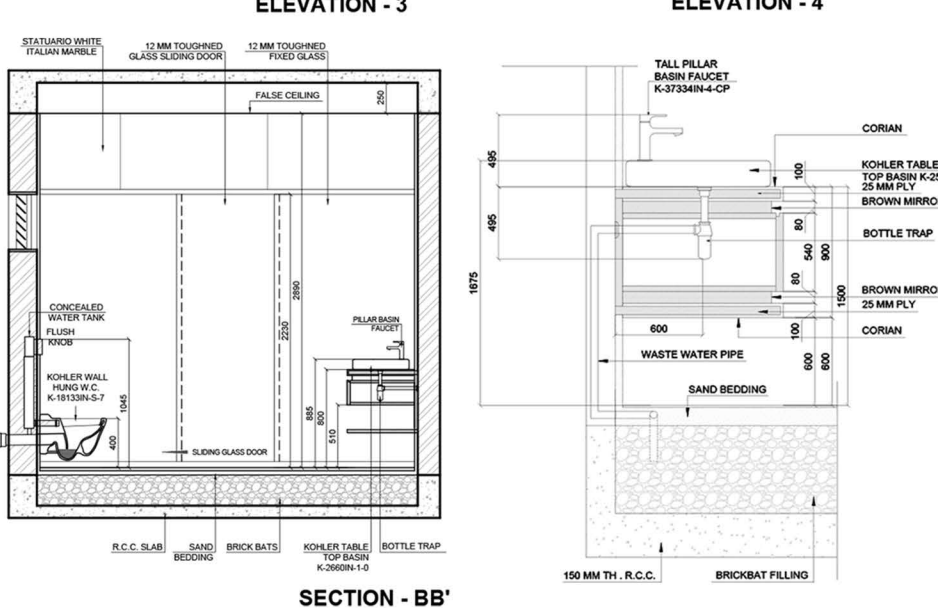
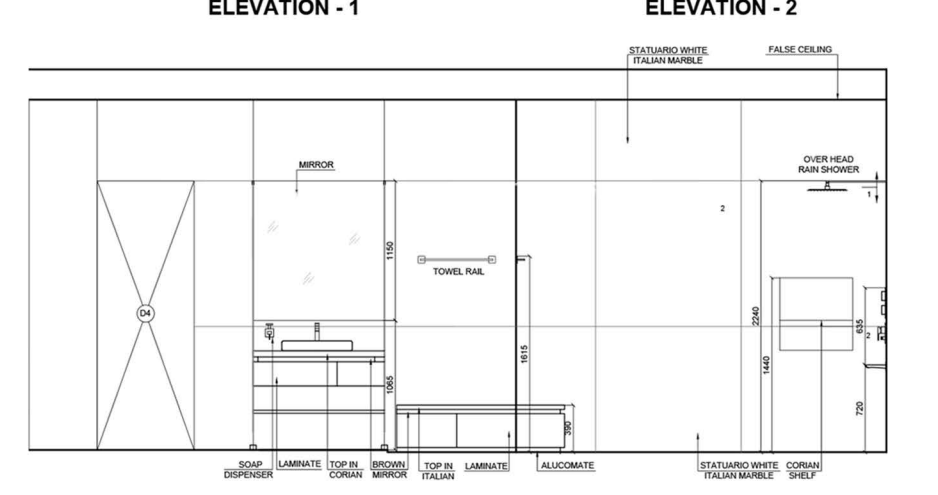
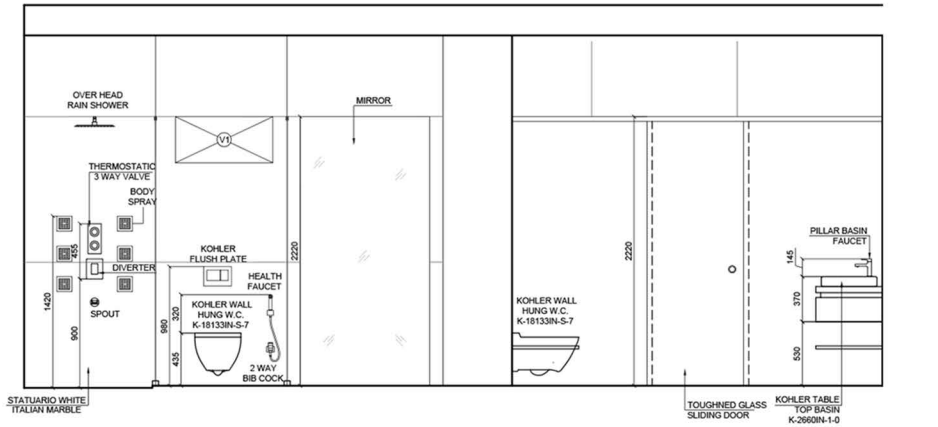
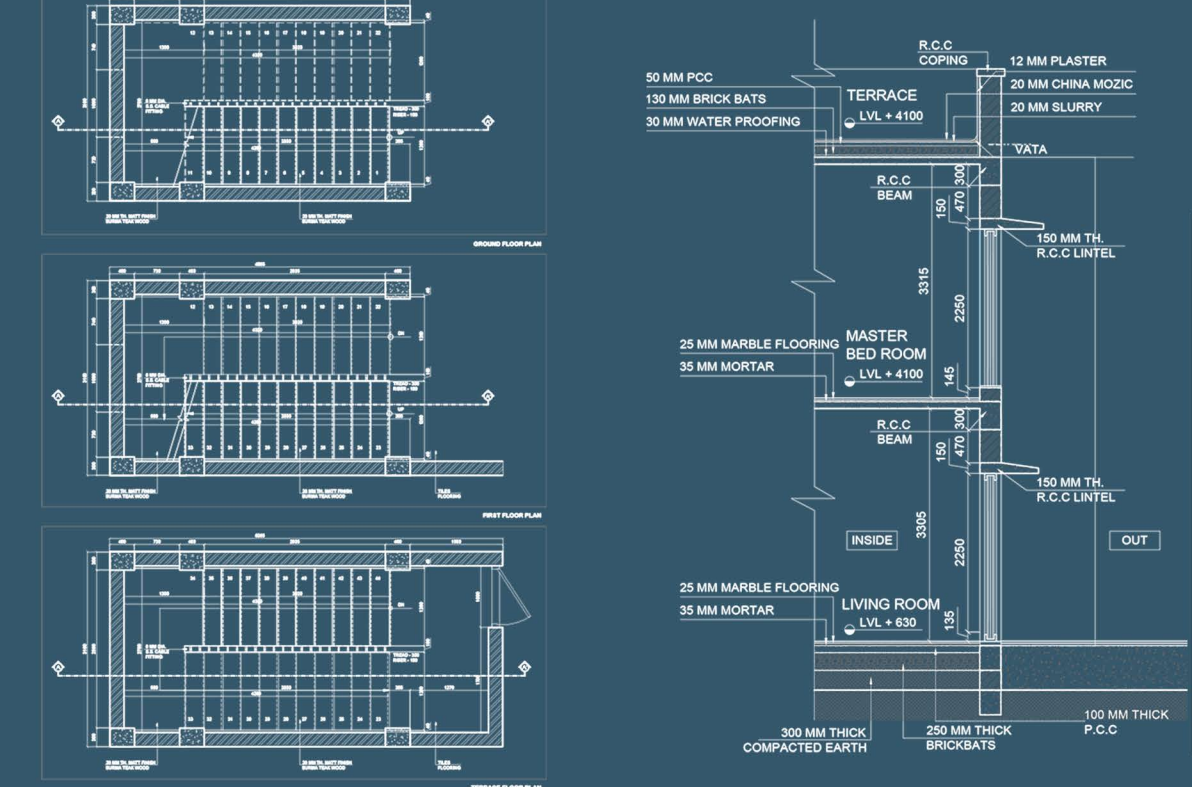
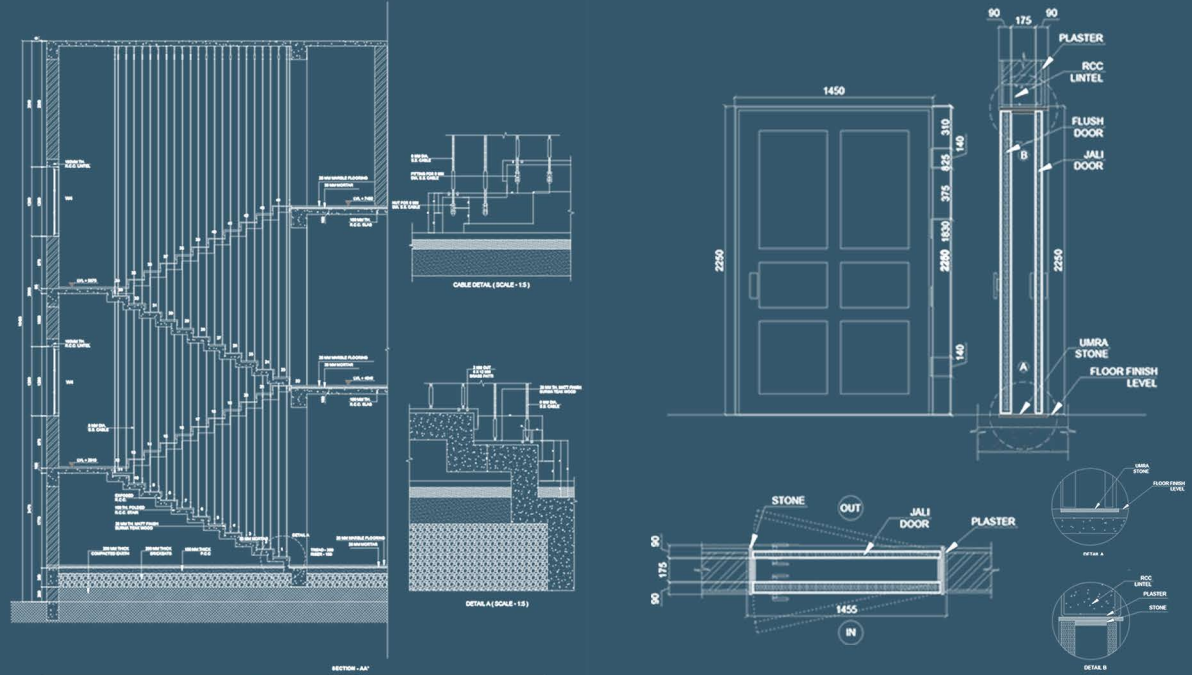
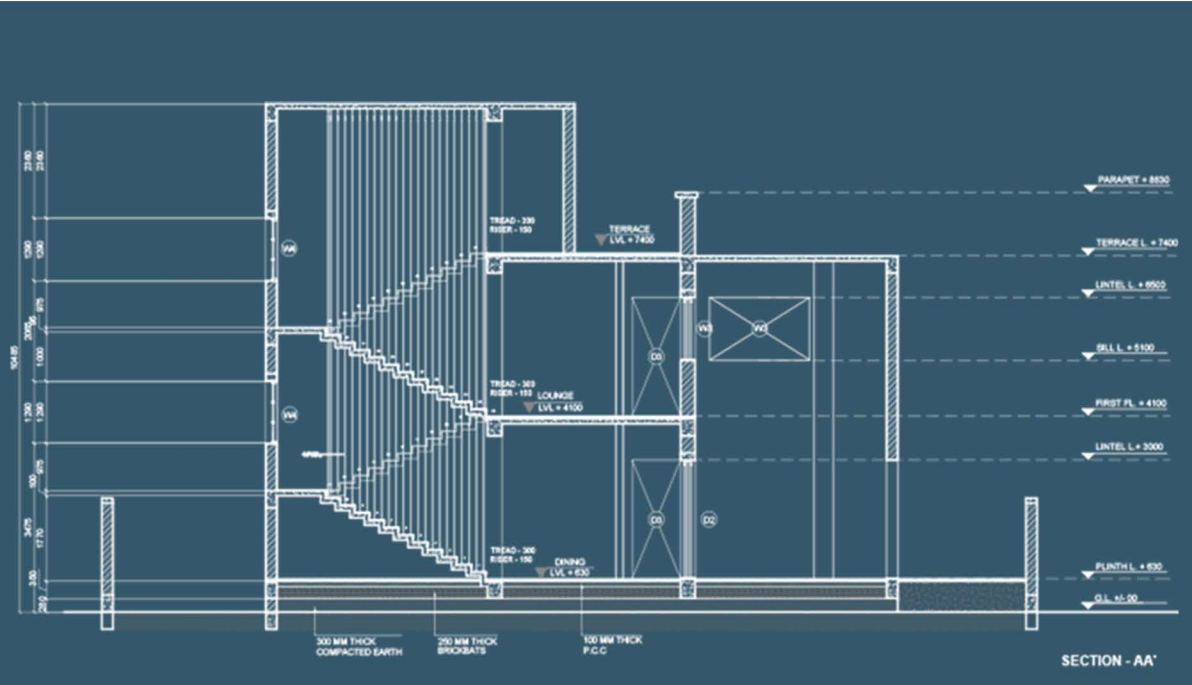
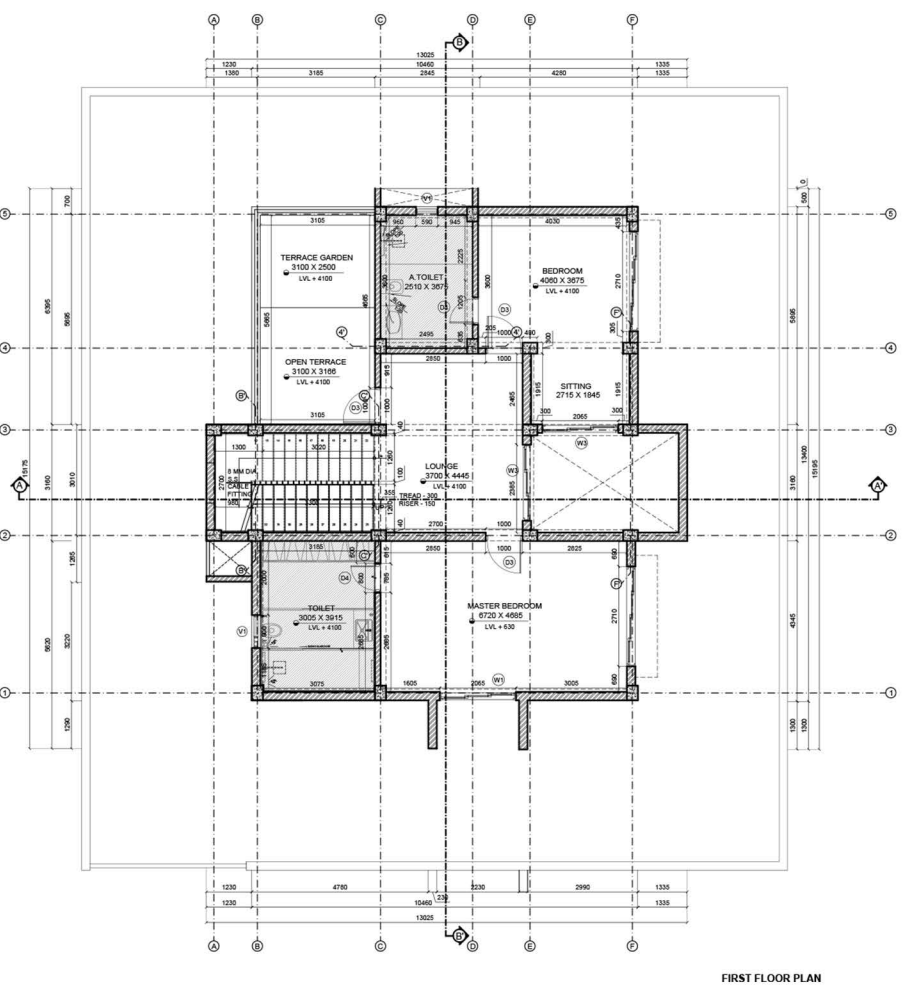
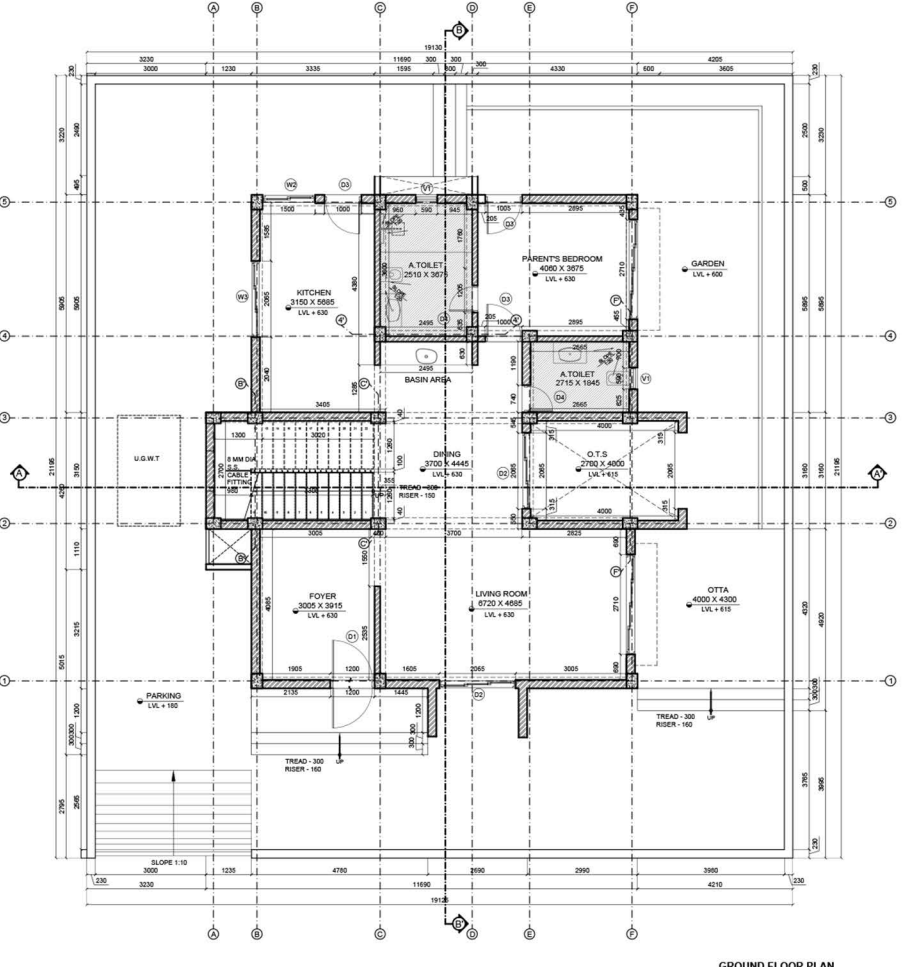
LEGENDS:

- 1) ENTRANCE COURT
- 2) ADMINISTRATION
- 3) EXHIBITION AREA
- 4) SCULPTURE COURT
- 5) AMPHITHEATRE
- 6) TERRACE
- 7) VISUAL ARTS
- 8) PAINTING STUDIO
- 9) PHOTOGRAPHY STUDIO
- 10) LIBRARY
- 11) AUDITORIUM
- 12) TOILET

WORKING DRAWINGS



Developing a set of working drawings for the purpose of execution and construction, architectural detailing of building components, details and function of building services, back and forth design processes, exposure to materials, products and assembly.





ARJAYAM

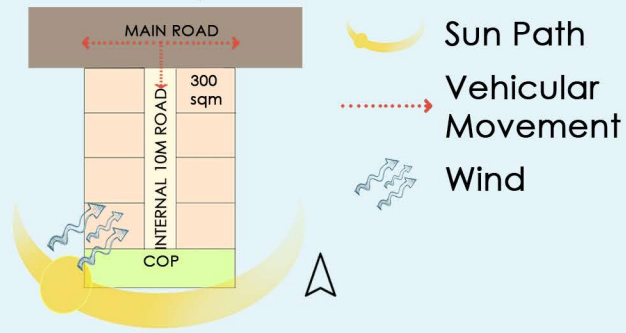
Realty Vertical Studio's residential design methodology revolves around tailoring solutions to suit specific contexts. We delve into understanding market forces, land values, builder perspectives, profit margins, construction costs, and regulatory by-laws. The program formulation process hinges on grasping functional needs, site contexts, environmental conditions, and cultural values to shape architectural designs. By aligning conceptual positions with interpreted program objectives, we craft residential spaces that seamlessly blend functionality with their surroundings.

Site



Immediate context analysis to identify threats, strength and create opportunities for site and block development.

Site Analysis



SWOT Analysis

Strength
 - Site in central zone.
 - Easy accessibility and connectivity

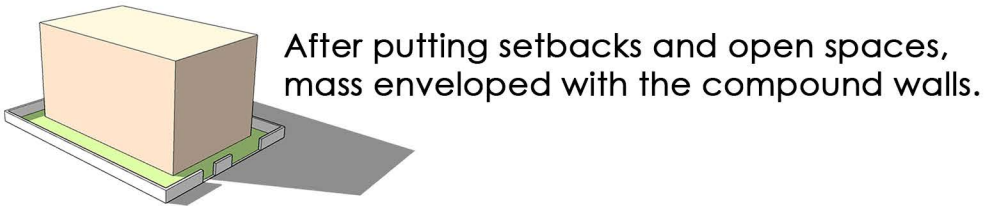
Threat
 - Railway line nearby



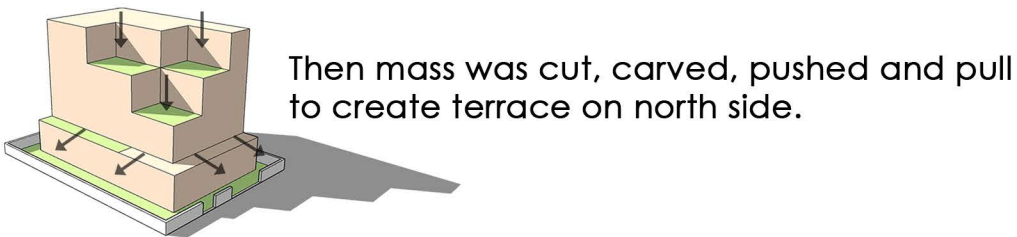
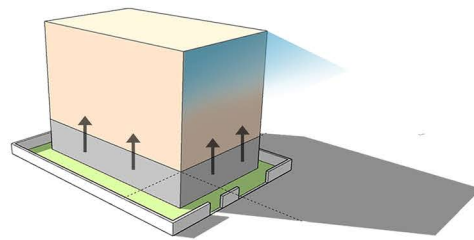
Weakness
 - The pollution due to factories nearby.

Opportunities
 - COP
 - Connected with 18m wide road

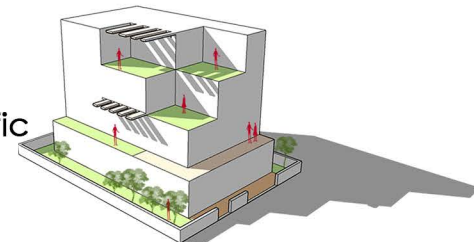
Form Derivation



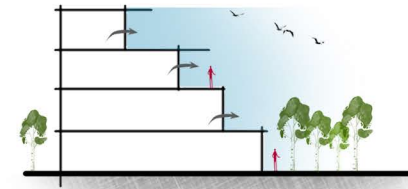
Mass was lifted to get a good view towards each other.



The solid top works as terraces for specific function, with major open spaces in the north side which is towards road.



Concept



The concept of the stepped cube house, Articulated as a G+3 storey home. The stacking of the floors plates defined the look of a cuboid which was there after intergrated with solid volumes with natural steps. The house appears a set of cubes with varied volumes, arranged with a balance play of solid.



Ground Floor Plan

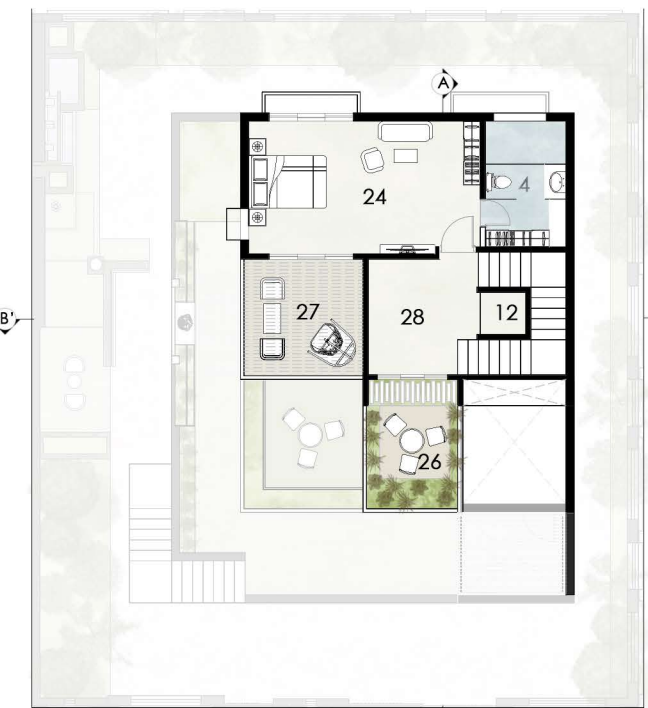


First Floor Plan

- LEGENDS
- 1) ENTRANCE
 - 2) PARKING
 - 3) FOYER
 - 4) TOILET
 - 5) LAUNDRY
 - 6) HOME OFFICE
 - 7) HOME THEATRE
 - 8) SERVANT BED ROOM
 - 9) DECK SITING
 - 10) WATER FEATURE
 - 11) GARDEN
 - 12) LIFT
 - 13) ENTRANCE DECK
 - 14) FOYER
 - 15) LIVING ROOM
 - 16) POOJA ROOM
 - 17) DINING
 - 18) KITCHEN
 - 19) SEMI-COVERED DECK
 - 20) KITCHEN GARDEN
 - 21) GRANDPARENTS ROOM
 - 22) GYM
 - 23) OPEN TERRACE
 - 24) MASTER BEDROOM
 - 25) BEDROOM
 - 26) TERRACE
 - 27) SEMI COVERED TERRACE



Second Floor Plan



Third Floor Plan

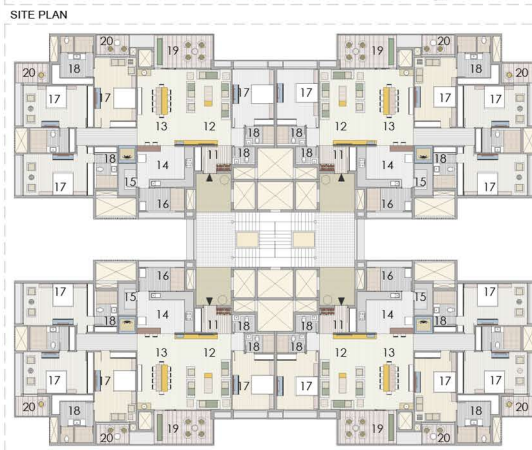
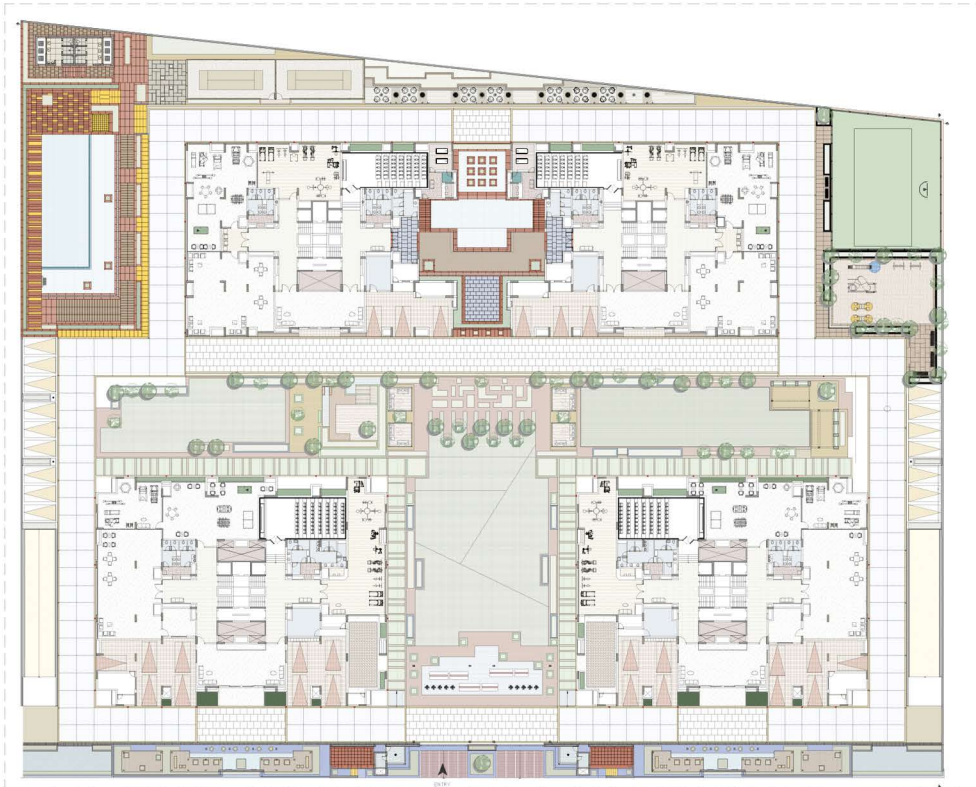




INTERNSHIP WORK

During my internship at Apurva Amin Architect, I played a crucial role in conceptualizing innovative solutions, maintaining updated blueprint files, and coordinating drawing reviews with multiple consultants. These efforts significantly enhanced project accuracy and streamlined collaboration with professional architects, contributing to the successful outcomes of various projects.

DECORA Sky-Hill: 12-storey residential complex featuring 4 BHK apartments with abundant natural light. I contributed to 3D rendering, presentation drawings, and select detail drawings.



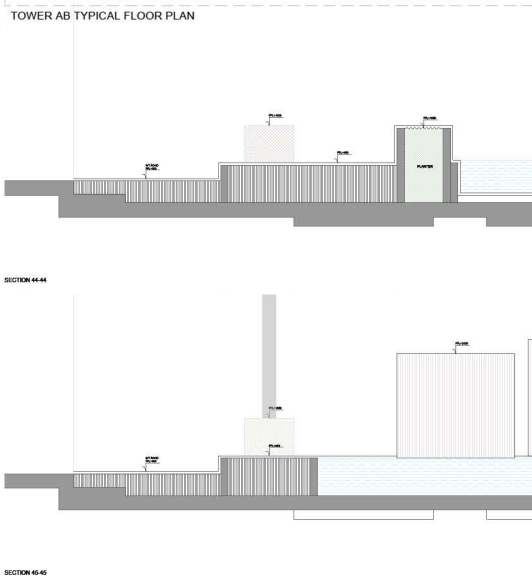
UNIT PLAN

LEGENDS:

- 1. RAMP
- 2. GARDEN
- 3. INFINITY POOL
- 4. TODDLERS POOL
- 5. CHANGING R.
- 6. FOYER
- 7. MULTIP. HALL
- 8. INDOORPLAY
- 9. MOVIE THEATER
- 10. GYMNASIUM
- 11. VESTIBULE
- 12. DRAWING ROOM
- 13. DINNING
- 14. KITCHEN
- 15. STORE
- 16. WASHYARD
- 17. BEDROOM
- 18. TOILET
- 19. VERANDAH
- 20. BALCONY

SITE CONTENT:

SITE AREA: 27,721 SQ. MT.
 BUILDUP AREA: 5,500 SQ.MT.
 FLOORS: 1 BASEMENT,
 AB BLOCK- G+13
 CD BLOCK- G+11
 PERMI. FR. 78,183 SQ.MT.



SECTION 44-4

DECORA Madhuban: 11-storey residential complex with 4 BHK apartments, flooded with natural light. Amenities include landscaped garden, playground, gym, parking, movie theatre, indoor games, spa, pool, temple, club house, and fire safety system. I contributed to 3D rendering and presentation drawings.



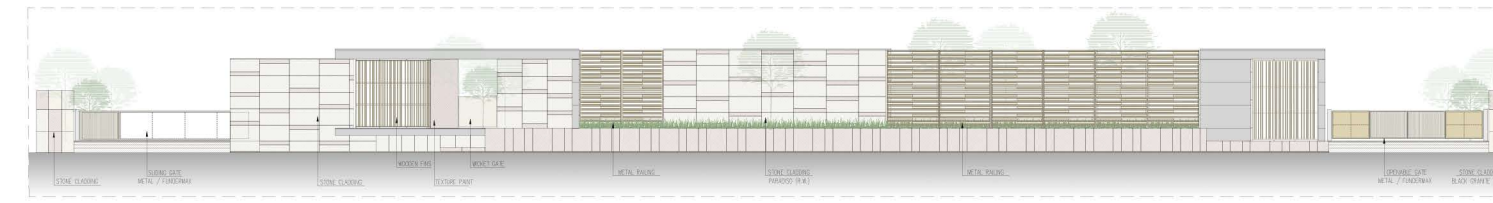
TOWER CD TYPICAL FLOOR PLAN



TOWER AB TYPICAL FLOOR PLAN

LEGEND

NO.	SPACE AREA	(TOWER AB)	(TOWER CD)
1.	VESTIBULE	6'9"x7'9"	5'0"x6'0"
2.	DRAWING ROOM	12'7"x20'8"	13'6"x18'8"
3.	G. BEDROOM-1	12'0"x14'5"	14'7"x11'0"
3A.	G. TOILET	5'5"x8'0"	5'0"x7'7"
4.	DINNING	11'8"x14'8"	15'2"x11'0"
4A.	VERANDAH	14'4"x5'9"	5'5"x11'4"
5.	KITCHEN	14'1"x10'2"	11'6"x11'0"
5A.	STORE ROOM	4'9"x7'9"	5'5"x7'3"
5B.	WASH YARD	13'7"x6'3"	4'9"x11'0"
6.	M. BEDROOM-2	19'2"x12'9"	13'0"x10'6"
6B.	TOILET	5'5"x12'6"	5'5"x8'0"
7.	M. BEDROOM-3	11'9"x18'9"	15'0"x11'0"
7B.	TOILET	15'9"x8'9"	13'0"x4'6"
8.	M. BEDROOM-4	18'9"x11'9"	19'0"x12'0"
8A.	TOILET	9'0"x5'0"	1'9"x12'6"



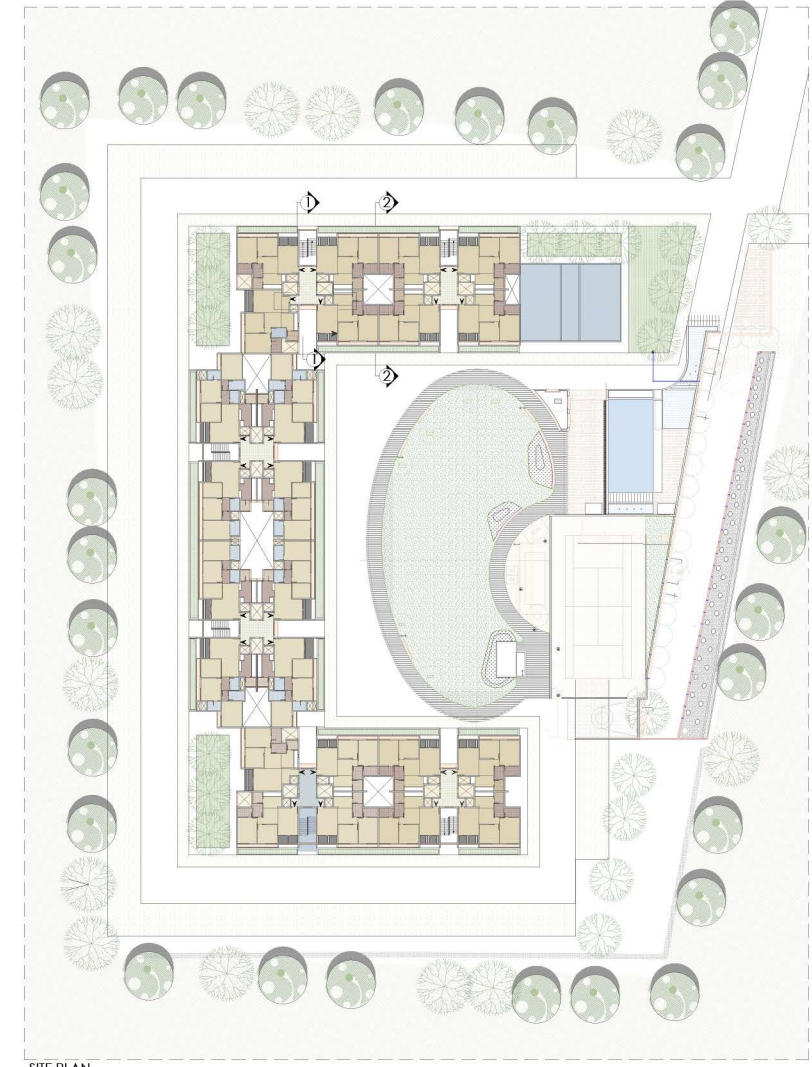
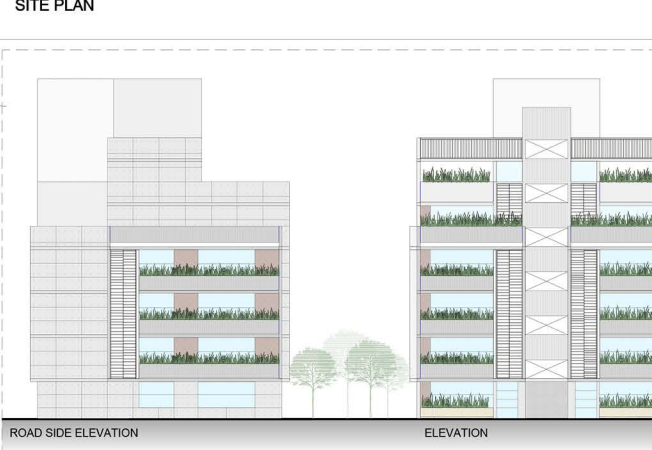
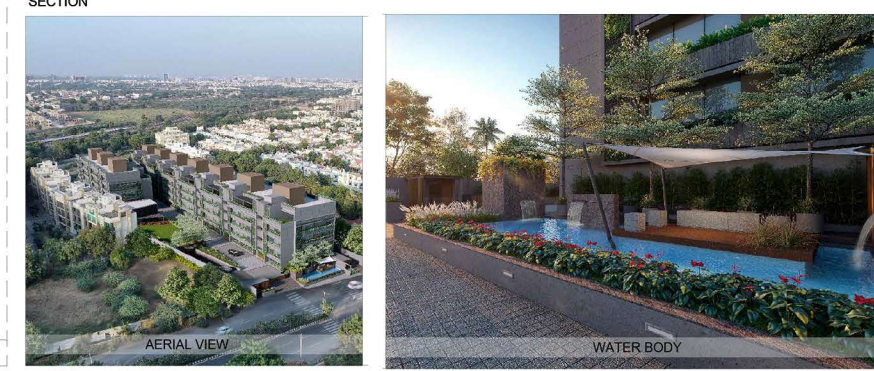
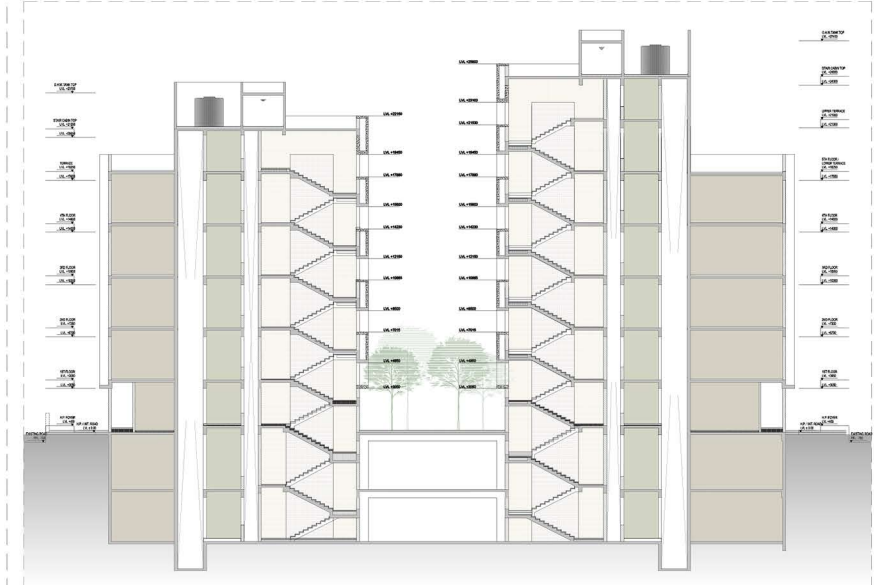
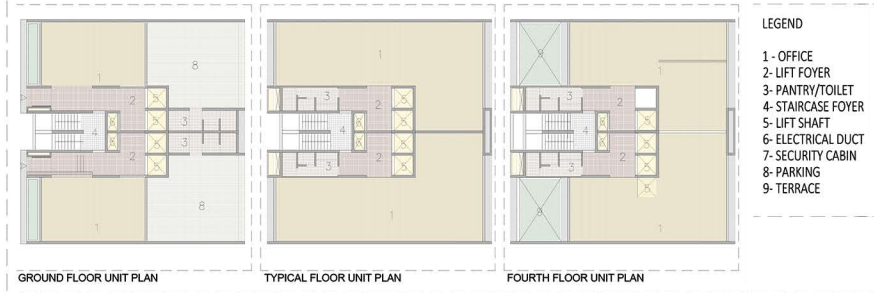
FRONTAL ELEVATION



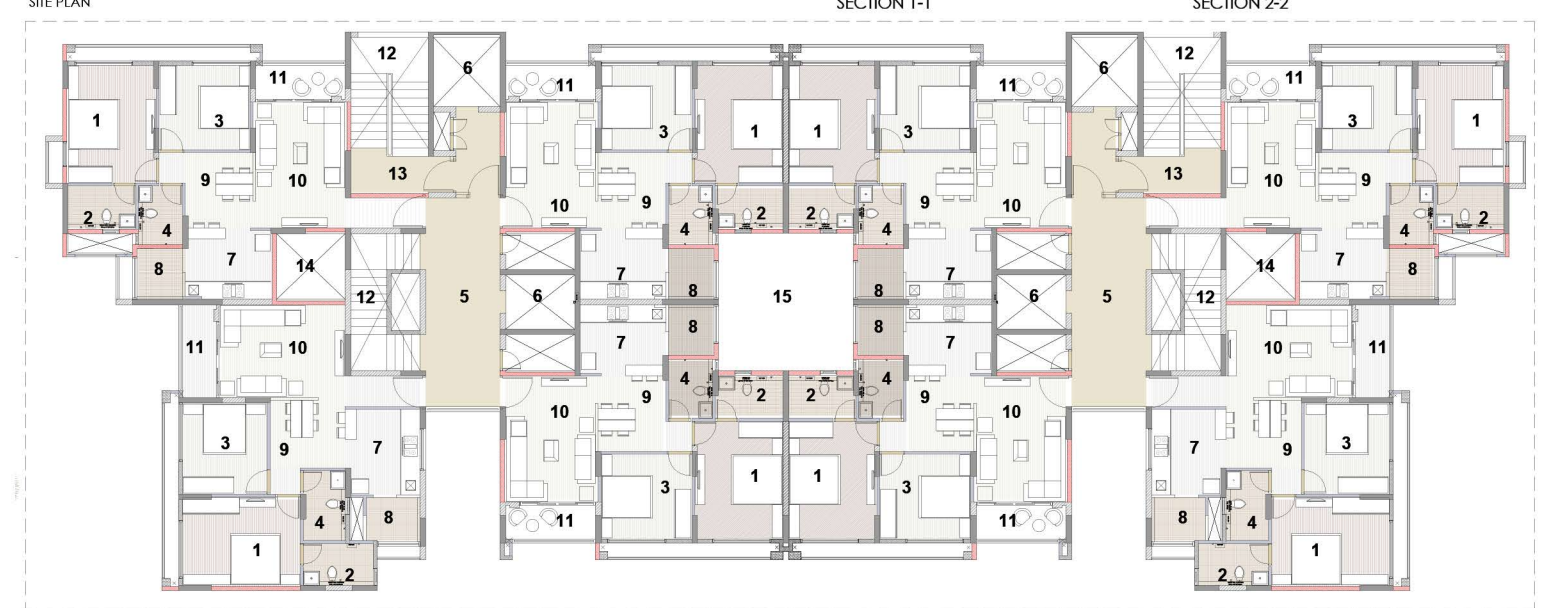
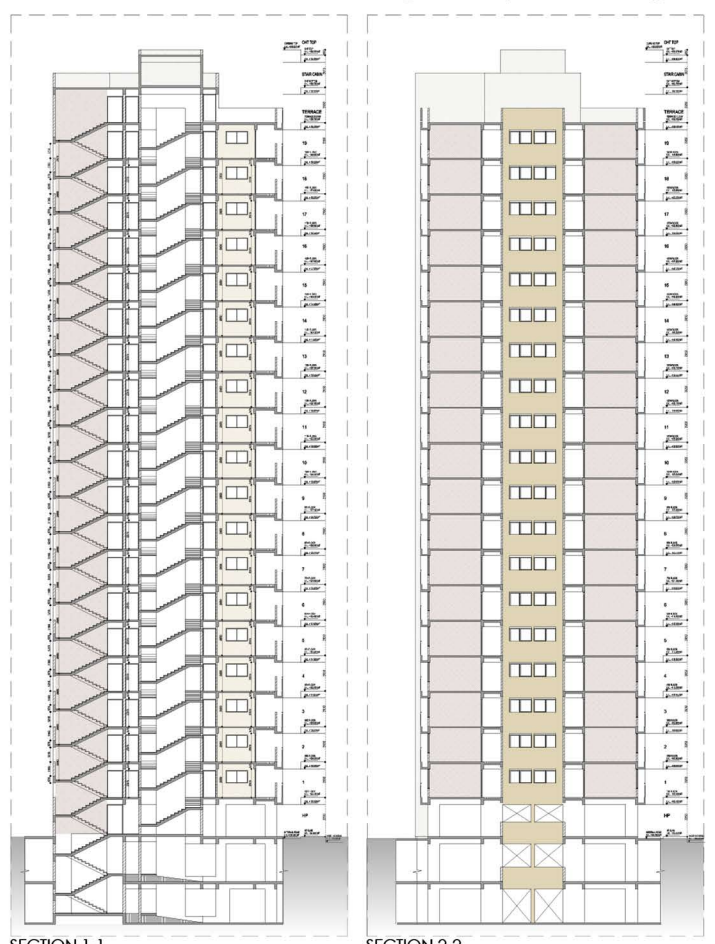
SECTION 44-4



TIMES Corporate Park: A distinctive commercial project with 20 standalone units, each featuring ground two floors and personal two-level basement parking. Spanning 8523 sq-m, it offers earthquake resistance, private terrace, central location, elevators, multipurpose facilities, maintenance staff, waste disposal, and power backup. I contributed to 3D rendering and presentation drawings.

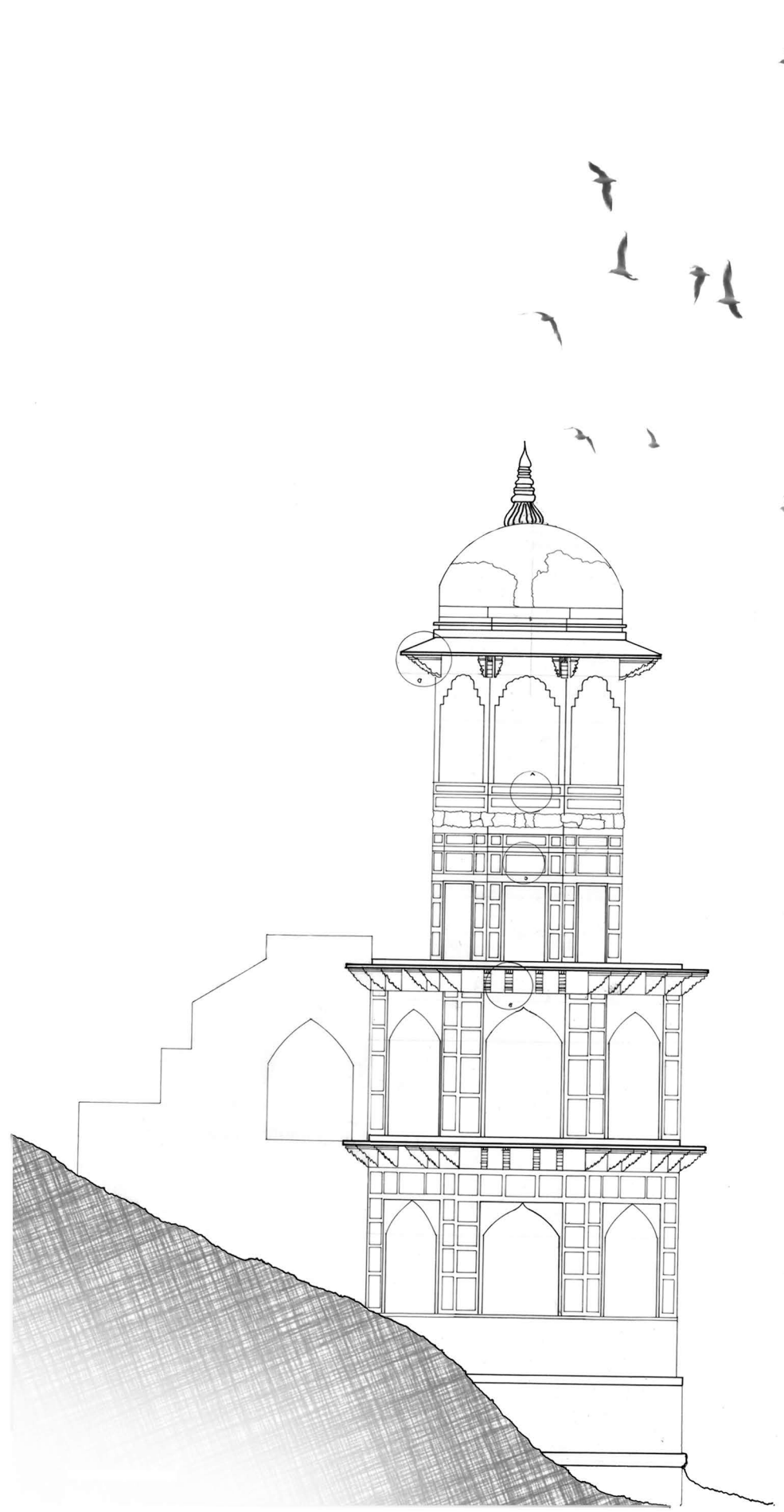


ARVIND Oasis Havens: Mixed-use project featuring 2 & 3 BHK luxury apartments with modern amenities. Well-ventilated units. With 6 towers and 19 floors, it offers a total of 452 units. I contributed to 3D rendering and layout drawings.



LEGENDS

- 1. BEDROOM 1
- 2. TOILET 1
- 3. BEDROOM 2
- 4. TOILET 2
- 5. FOYER
- 6. LIFT
- 7. KITCHEN
- 8. KITCHEN YARD
- 9. DINING
- 10. DRAWING ROOM
- 11. BALCONY
- 12. STAIRCASE
- 13. FIRE EXIT
- 14. DUCT
- 15. COURTYARD



GROUP WORK

Documentation-NST Jaisalmer

Jaisalmer, was a very affluent residing experience, its people, its street and their interactions etched a memorable experience in our minds, and taught us about social spaces in a community. The people were very caring and affectionate towards us, and were ready to help us. Rajpurohit's haveli, had become an integral part of our everyday lives. The temple near the haveli made the street, divine, live and active. It served as a social interactive node for the area.

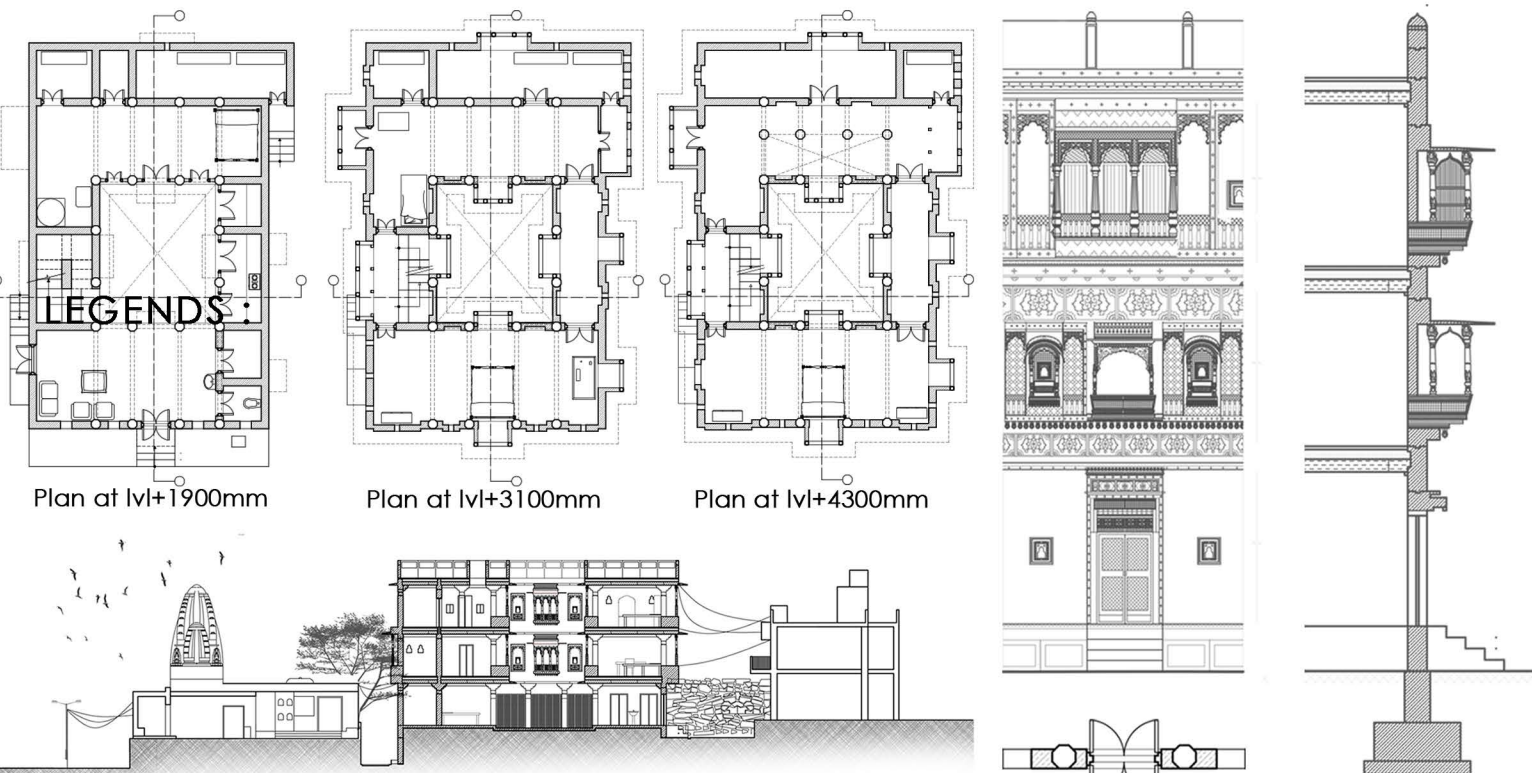
Analysis:

The streets have developed such that they are narrow and thus remain shaded

The courtyard in the house, acts as a social space as well as aids the house being cool

The chowk, which is an extension of the temple, acts as a focal point for interaction in the mornings and evenings.

Activities:

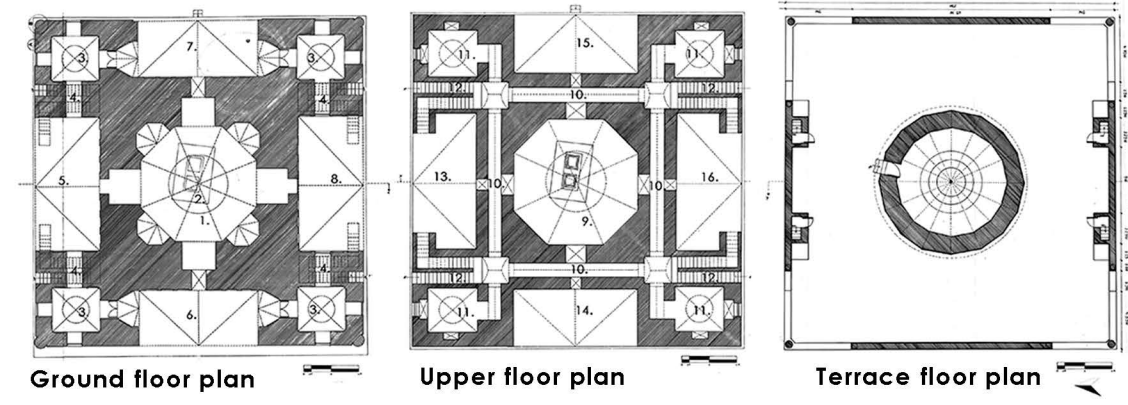
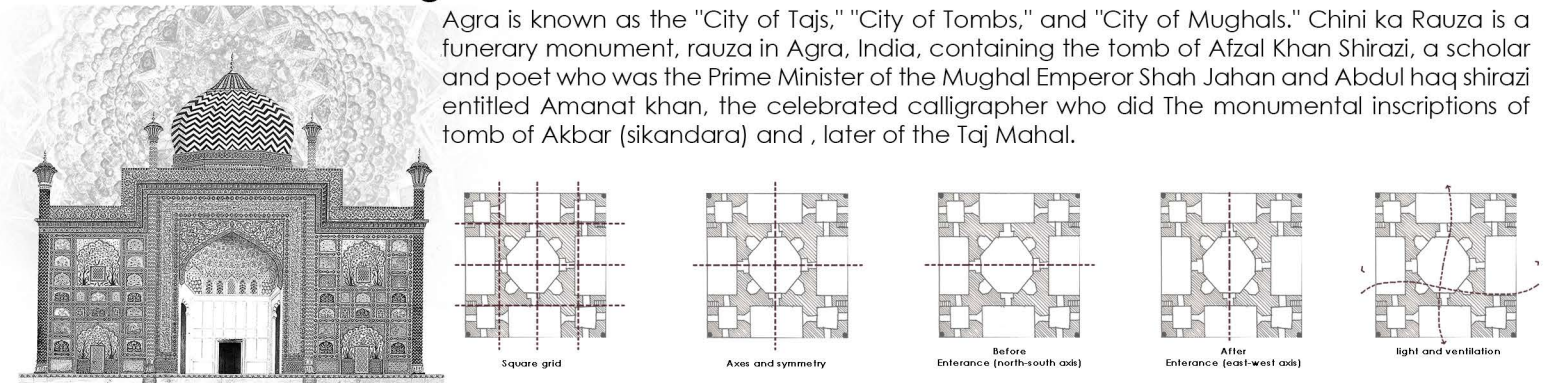


Street section

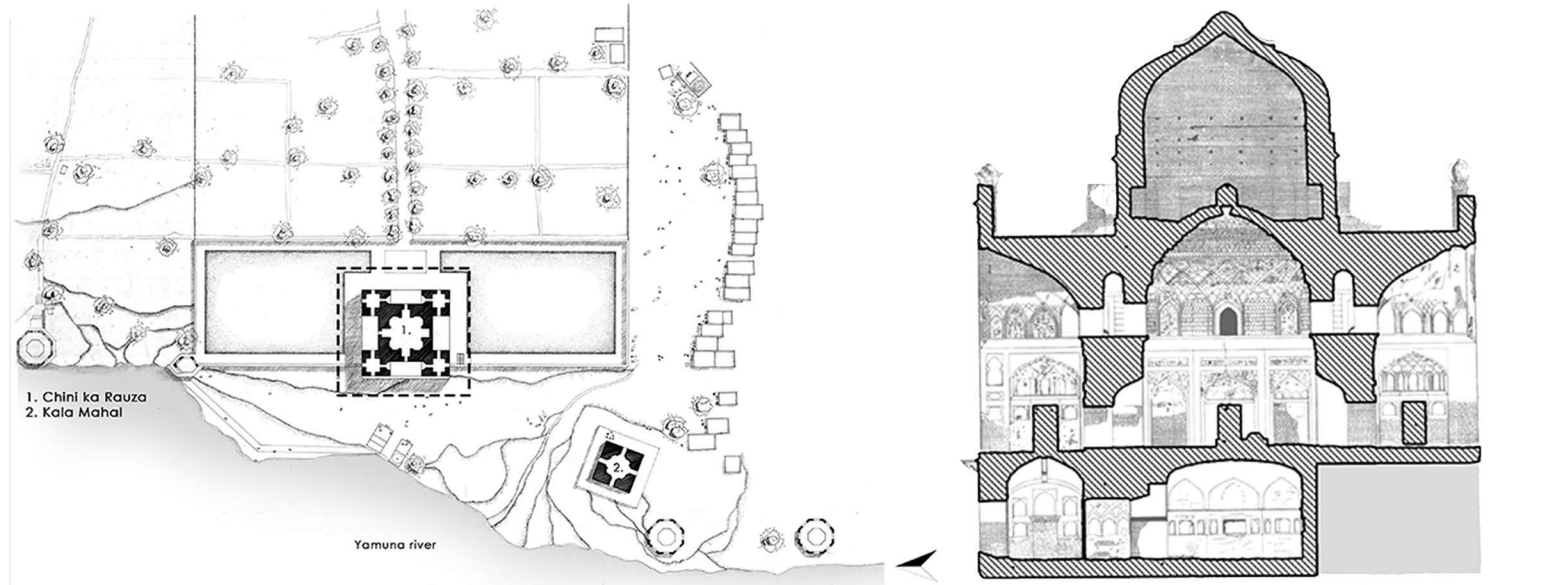
Wall section

Documentation-NST Agra

Agra is known as the "City of Tajs," "City of Tombs," and "City of Mughals." Chini ka Rauza is a funerary monument, rauza in Agra, India, containing the tomb of Afzal Khan Shirazi, a scholar and poet who was the Prime Minister of the Mughal Emperor Shah Jahan and Abdul haq shirazi entitled Amanat khan, the celebrated calligrapher who did The monumental inscriptions of tomb of Akbar (sikandara) and , later of the Taj Mahal.

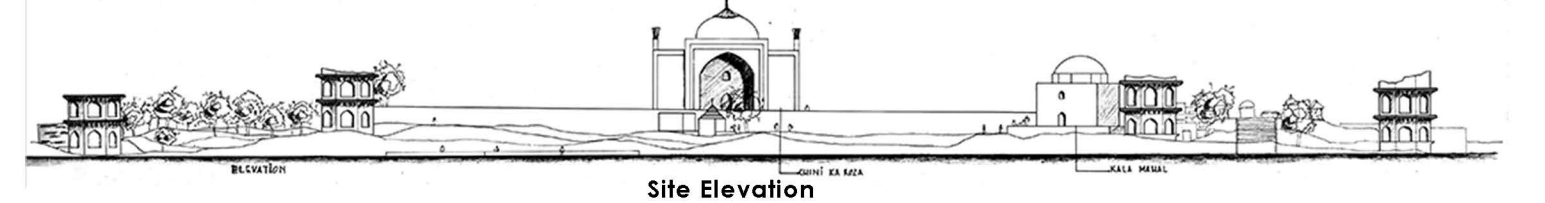


1. Octagonal chamber
2. Tomb
3. Angle room
4. Staircase
5. North vestibule
6. West vestibule
7. East vestibule
8. South vestibule
9. Octagonal chamber
10. Passage
11. Angle room
12. Staircase
13. Upper part north vestibule
14. Upper part west vestibule
15. Upper part east vestibule
16. Upper part south vestibule

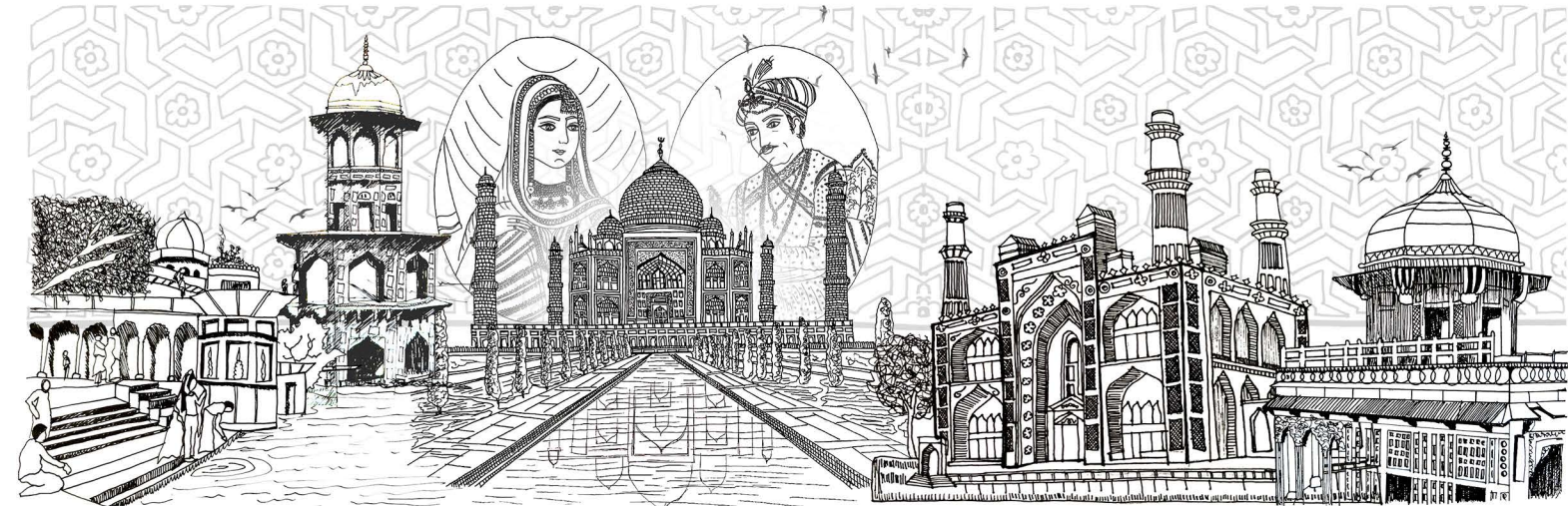


Site layout of Chini ka Rauza -

Section BB'



Site Elevation



LIK TROPHY

62nd NASA Competition

LOCATION



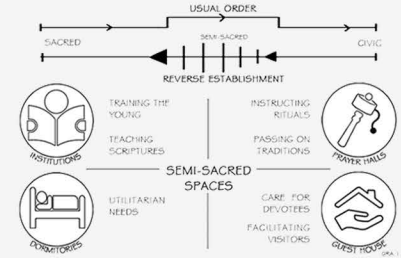
Namdroling monastery in bylakuppe . Karnataka, India is a thriving community and Home to thousands of lamas. Monks and nuns. Making it the largest niyang teaching centre in the world. Bylakuppe settlement is the largest as well as the oldest of settlements of tibetan refugees in india. It is located in the far-east end of mysore district.

HYPOTHESIS

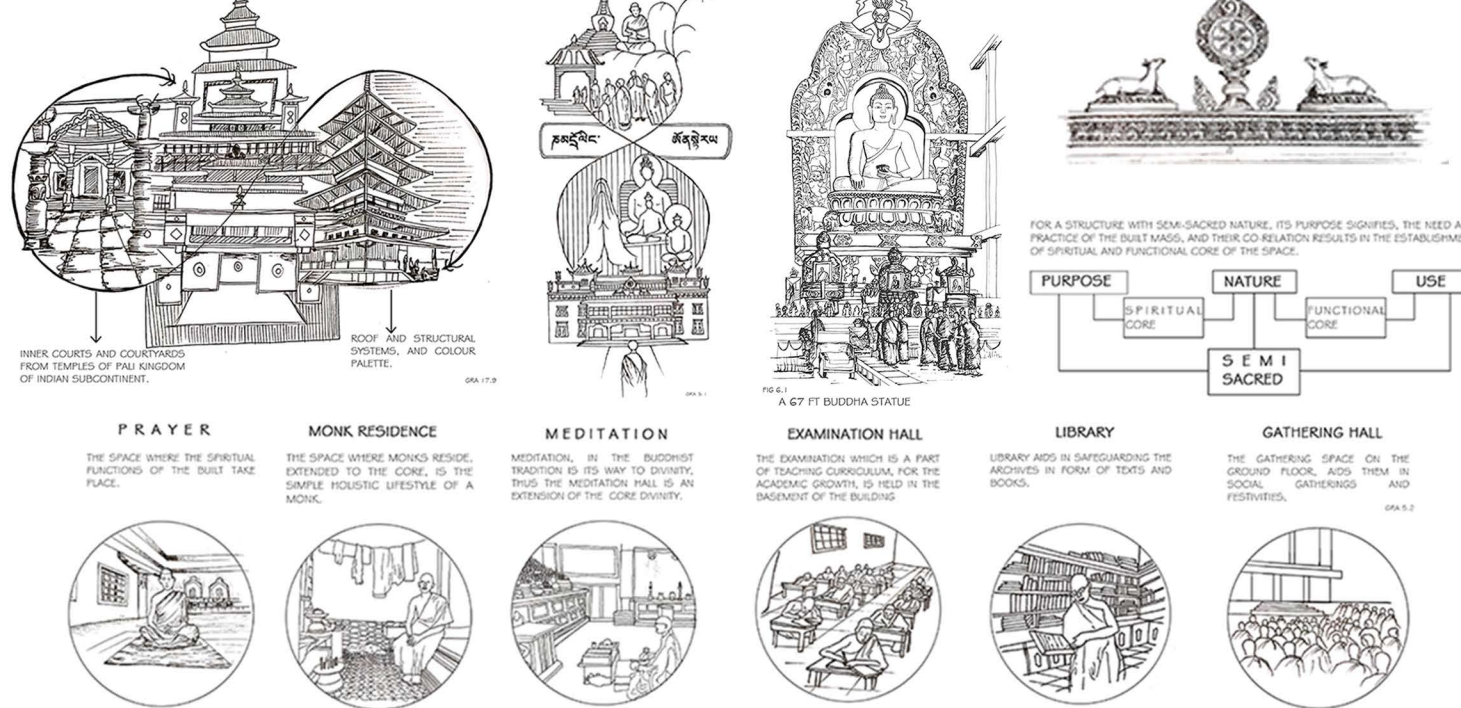
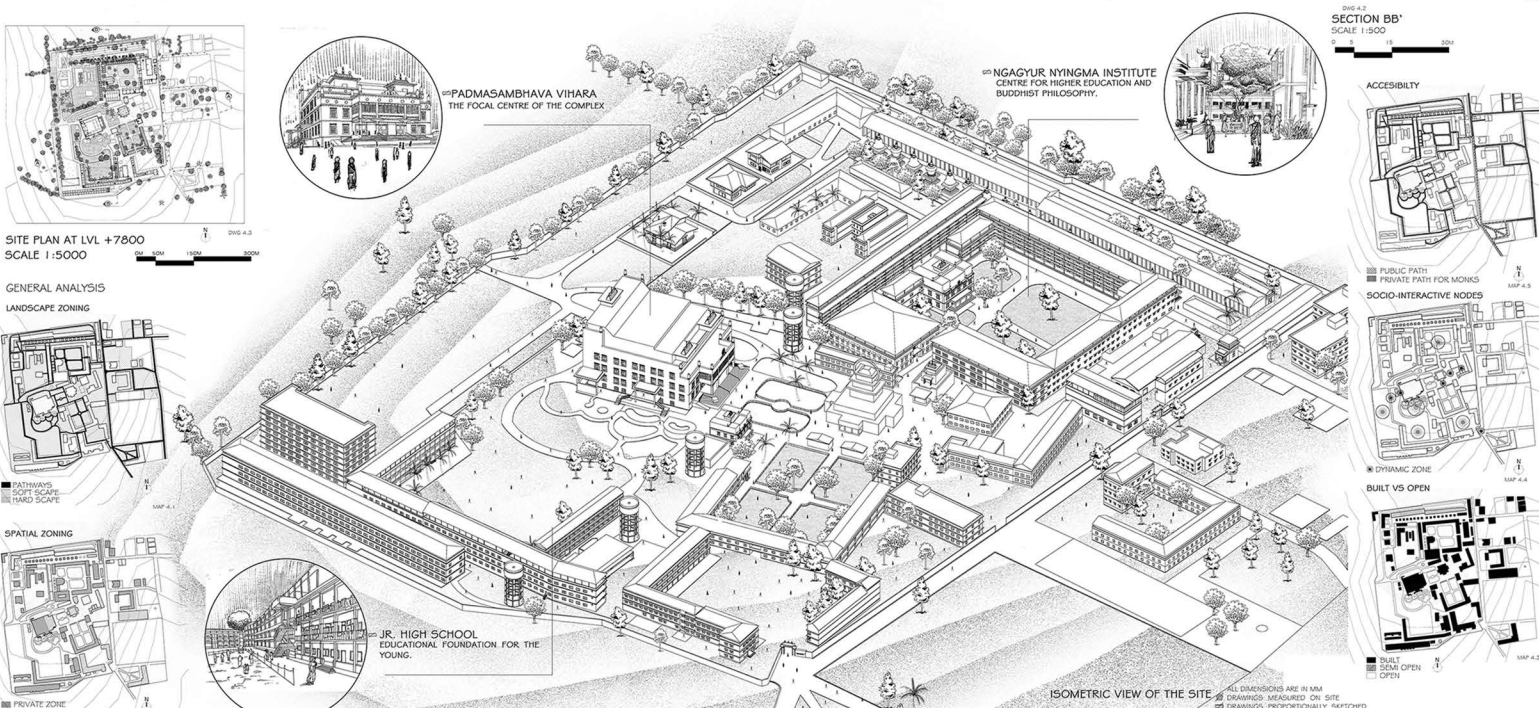
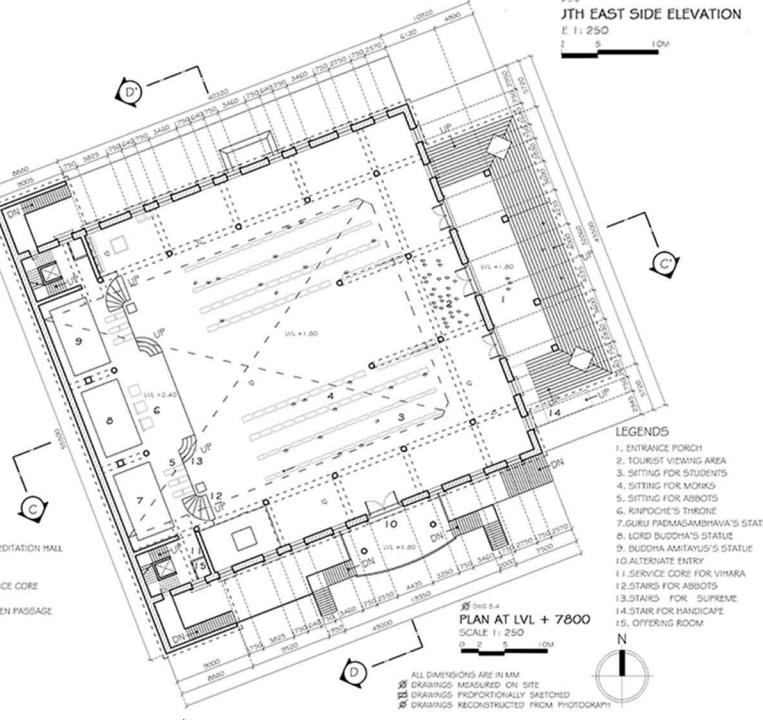
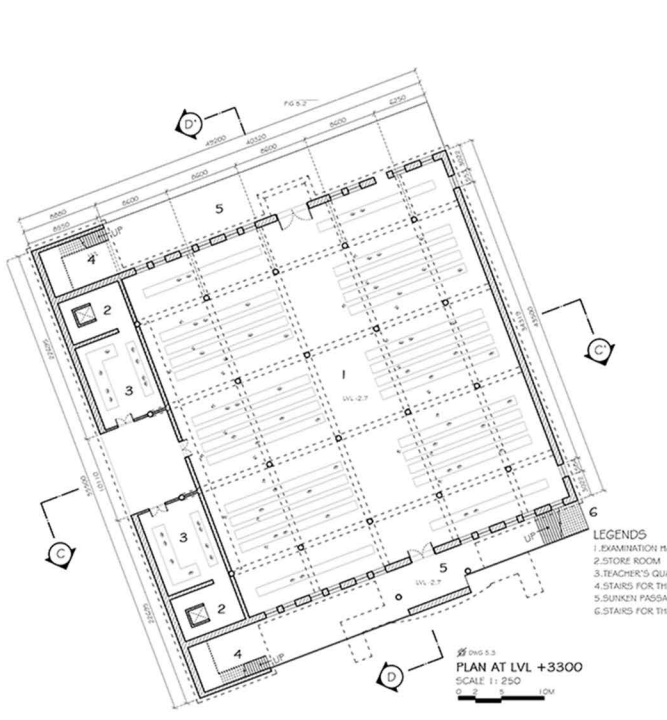
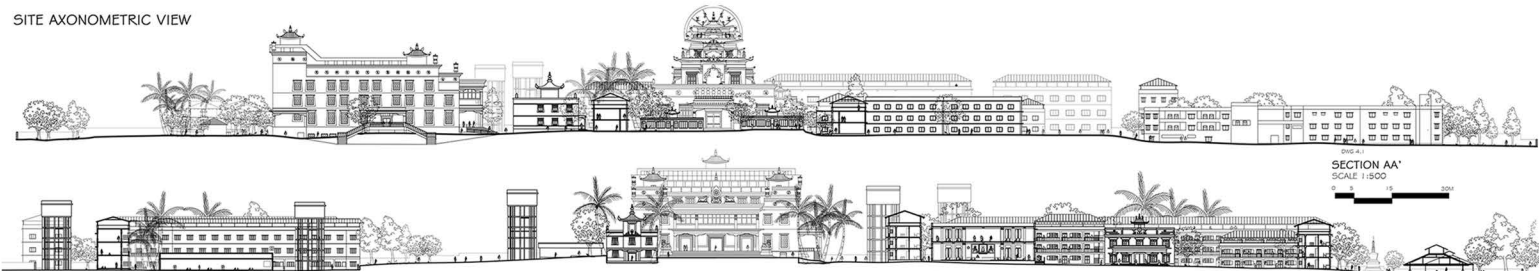
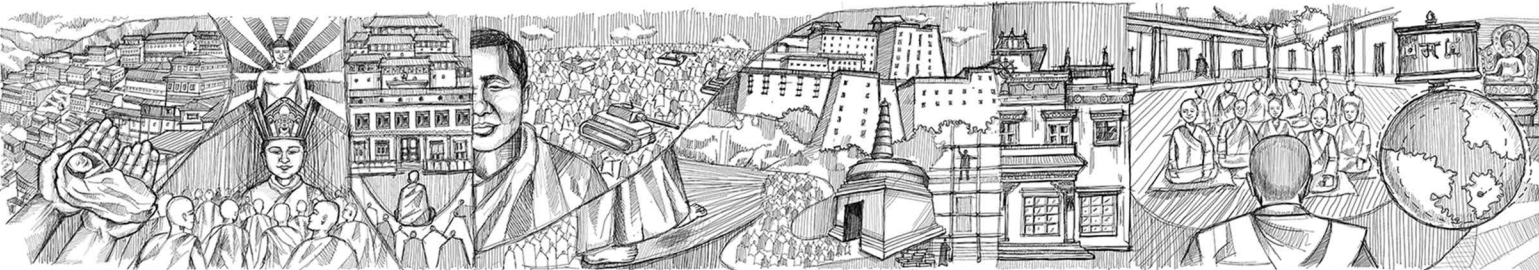
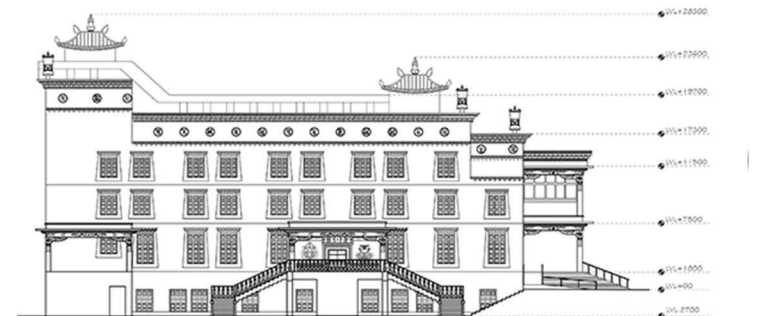
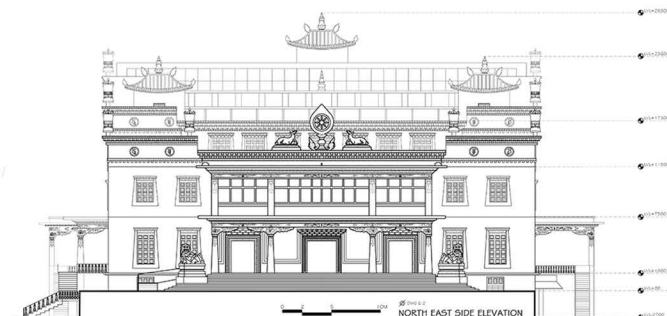
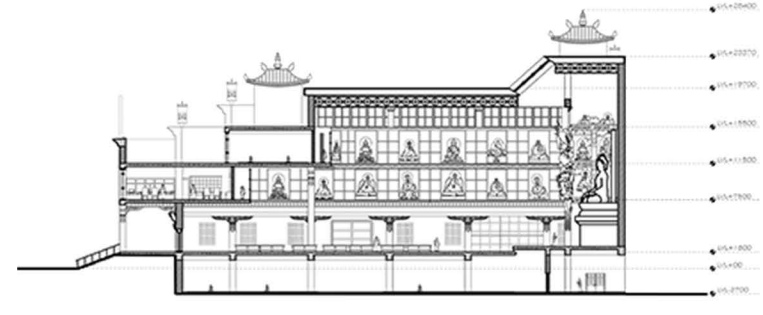
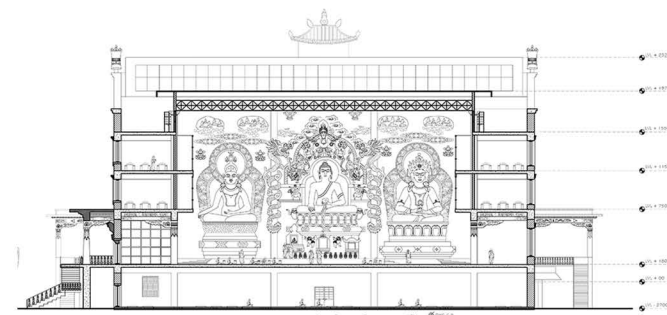
Some spaces elicit humans to respond beyond the ordinary, these become the focal importance of one's life, however, some extended spaces congregate, and explore their own meanings of spirituality. These extended spaces notonly serve as an extension of the sacred, but itself act as a core to thespace. With a unique essence to every structure.



SITE JUSTIFICATION



The genesis of the sacred territory is mostly ingrained with metaphysical beliefs of divine presence, and the elongations of its semi sacred and civic fabric follow in. However, the site follows reverse establishment of the former order, where the refugee camps (civic) were established in the first order



ANDC TROPHY

63rd NASA Competition
(Group of 10)

HYPOTHESIS

A region flourishes as a result of dynamism of human resources. Hence to effectuate the human movement a transit system is developed bridging the gap between a city and a village.

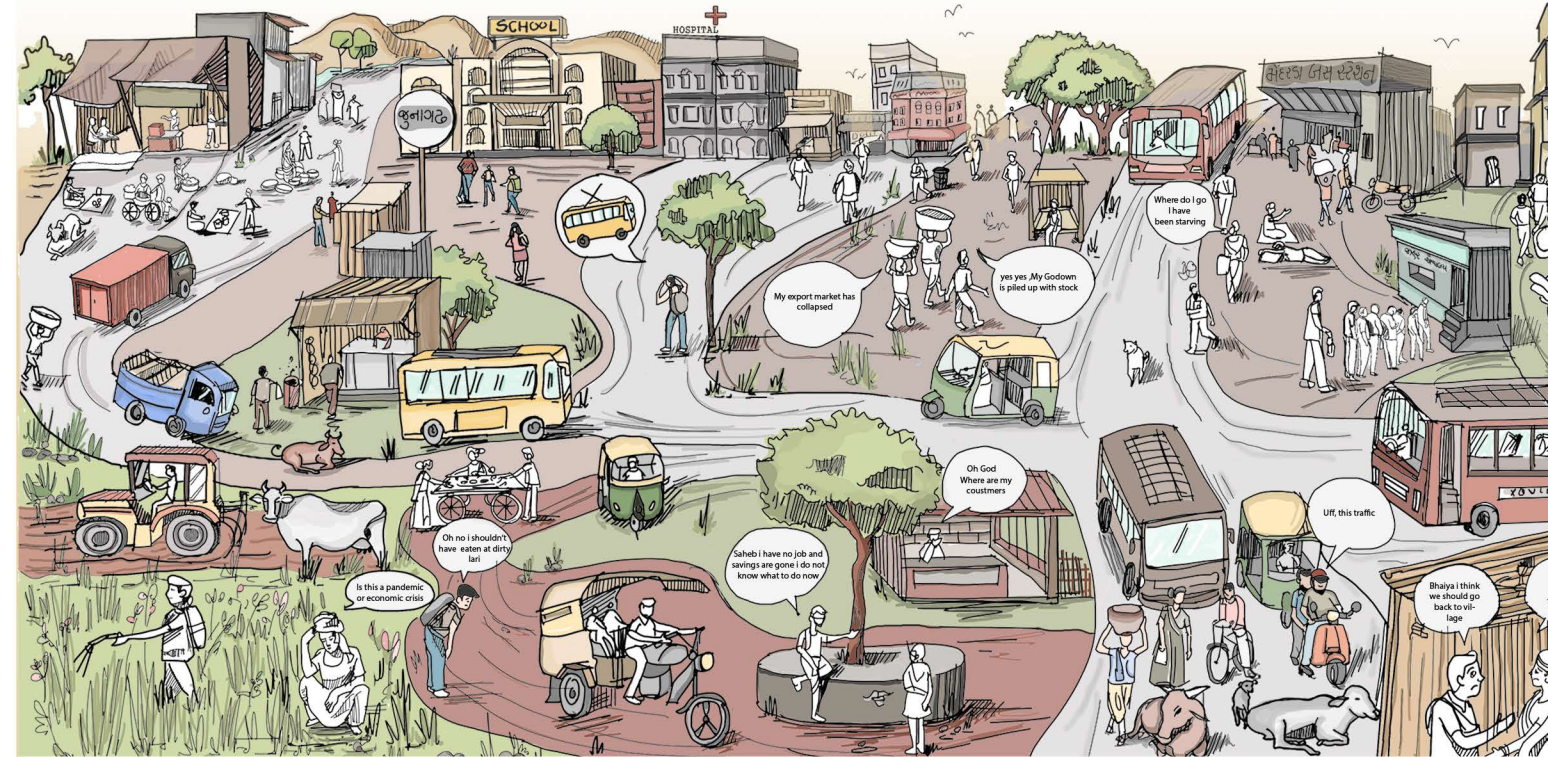
SITE LOCATION AND INTRODUCTION



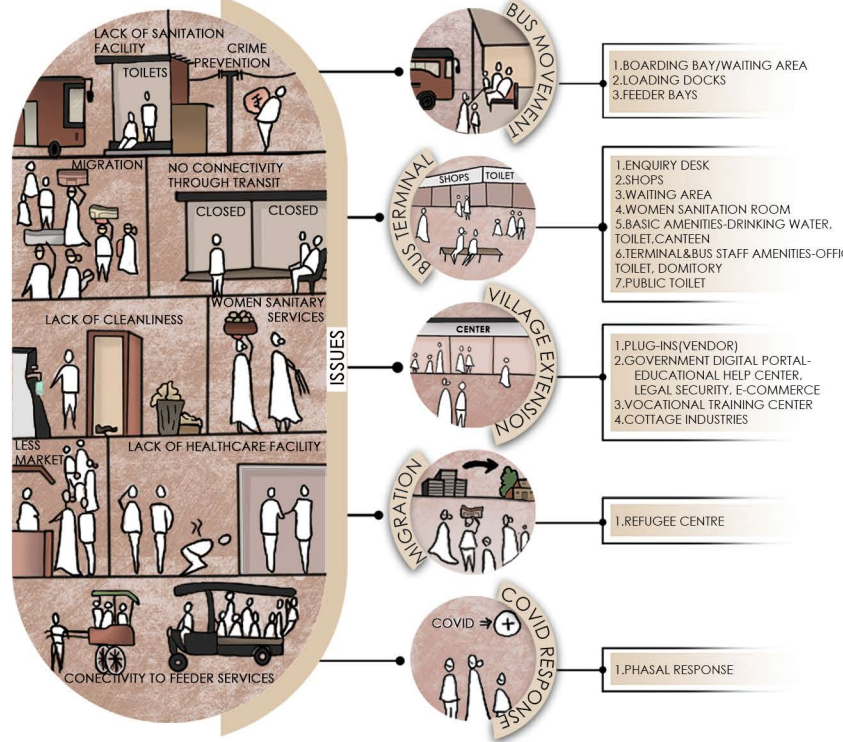
Mendarda village (21.32°N,70.32°E) lies on the banks of river madhuvanti, in the saurashtra region of gujarat. The village is known as a major gate way to the sasan gir forests

SITE JUSTIFICATION

The site is situated on a node connecting two major national highways. Livelihoods of various villagers are intertwined with the bus transit network, hence its serves as an imperative mode of income.



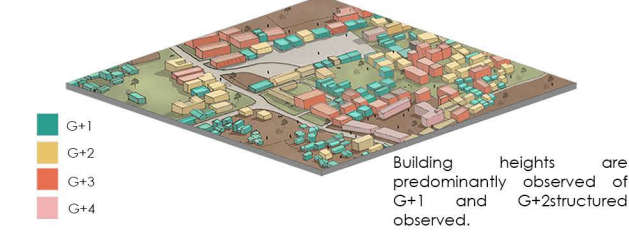
PROGRAMME



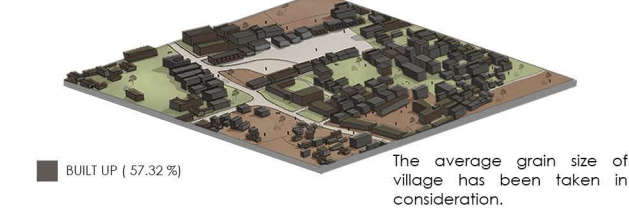
BUILDING USE



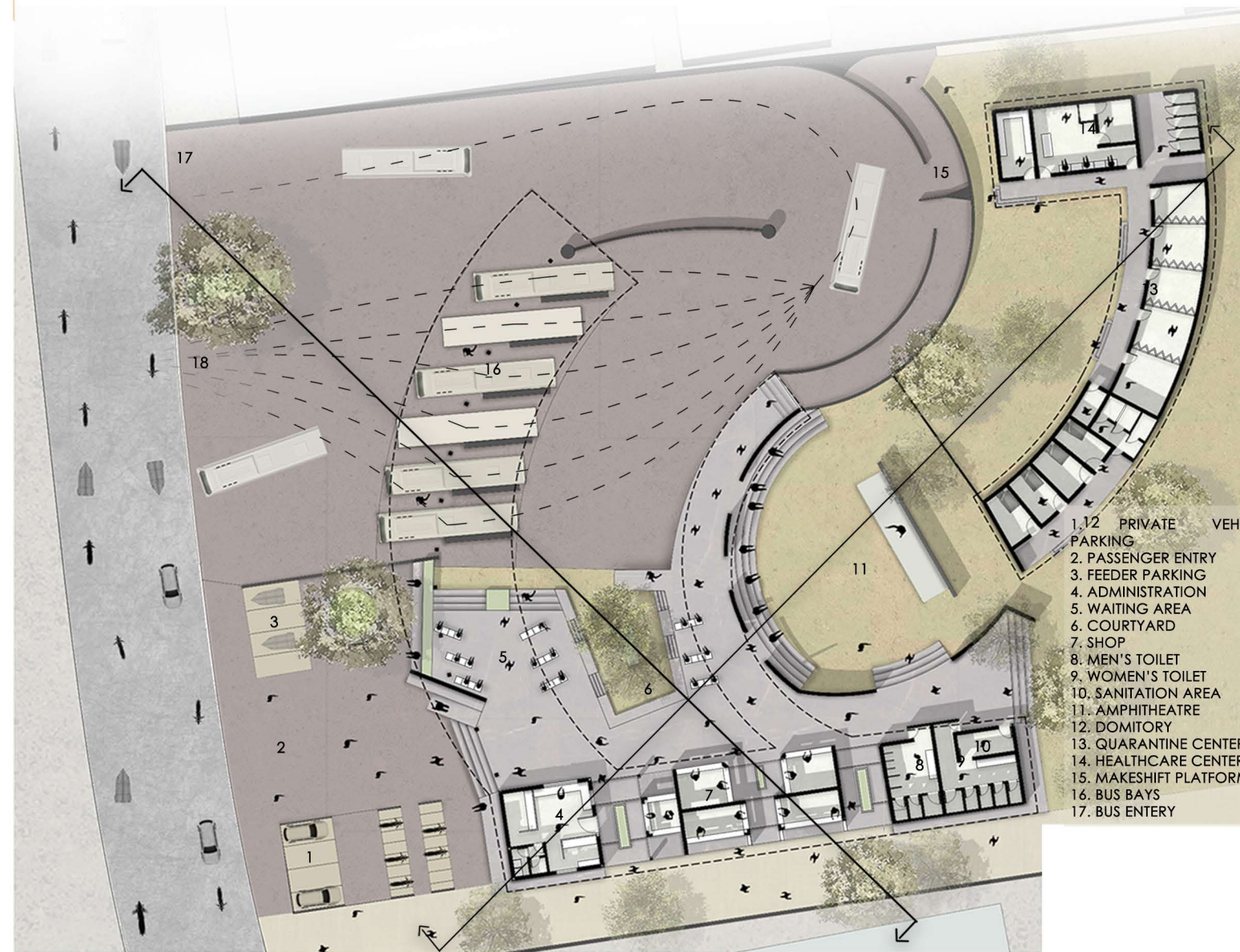
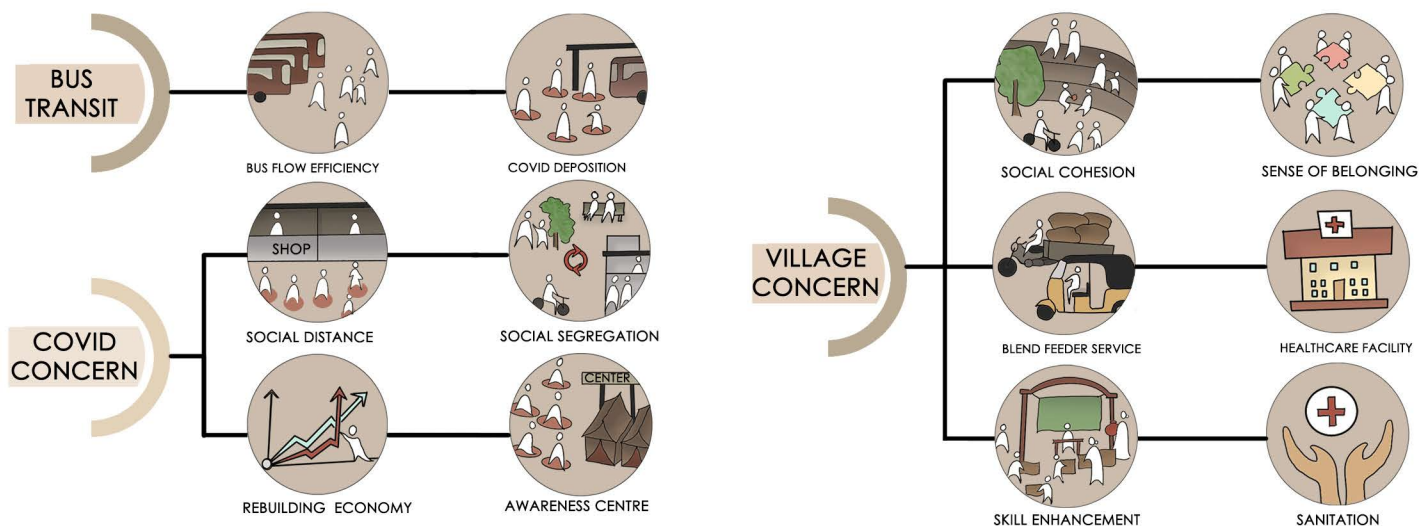
BUILDING HEIGHT



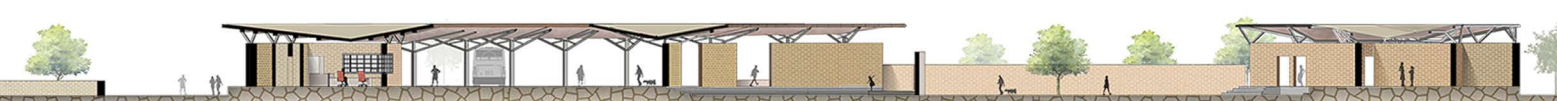
BUILT VS OPEN



DESIGN CONCERN



SECTION AA'

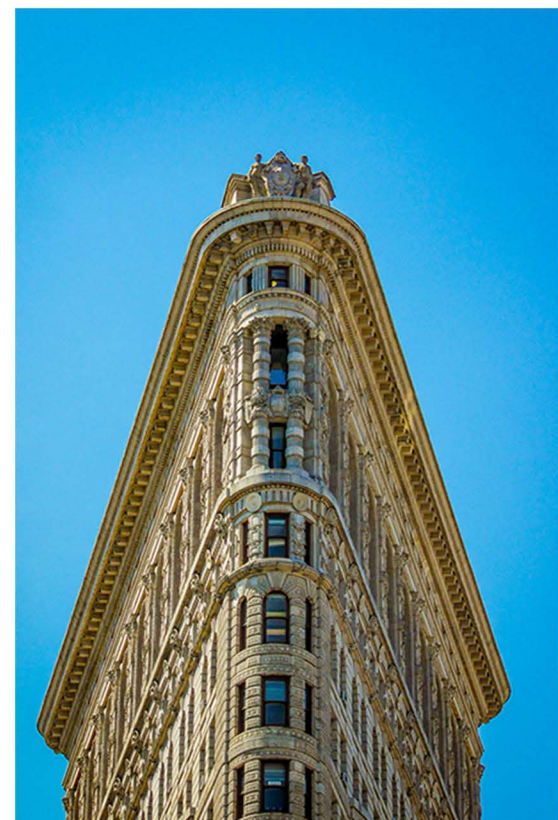
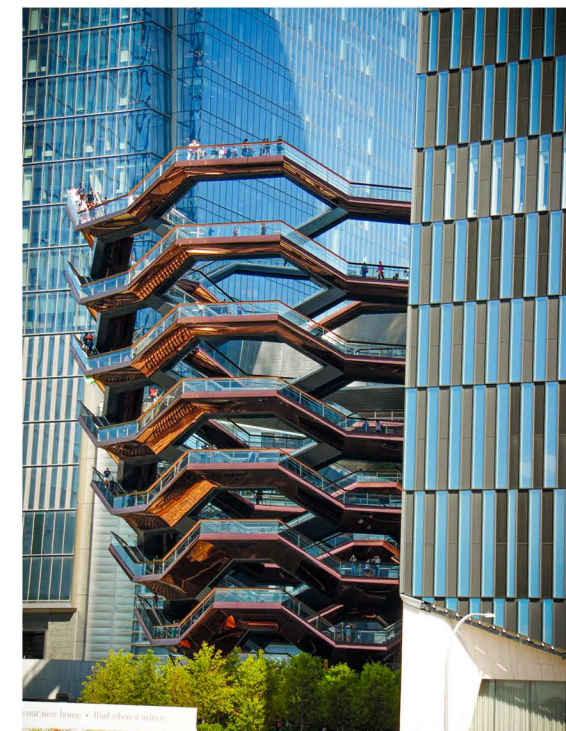
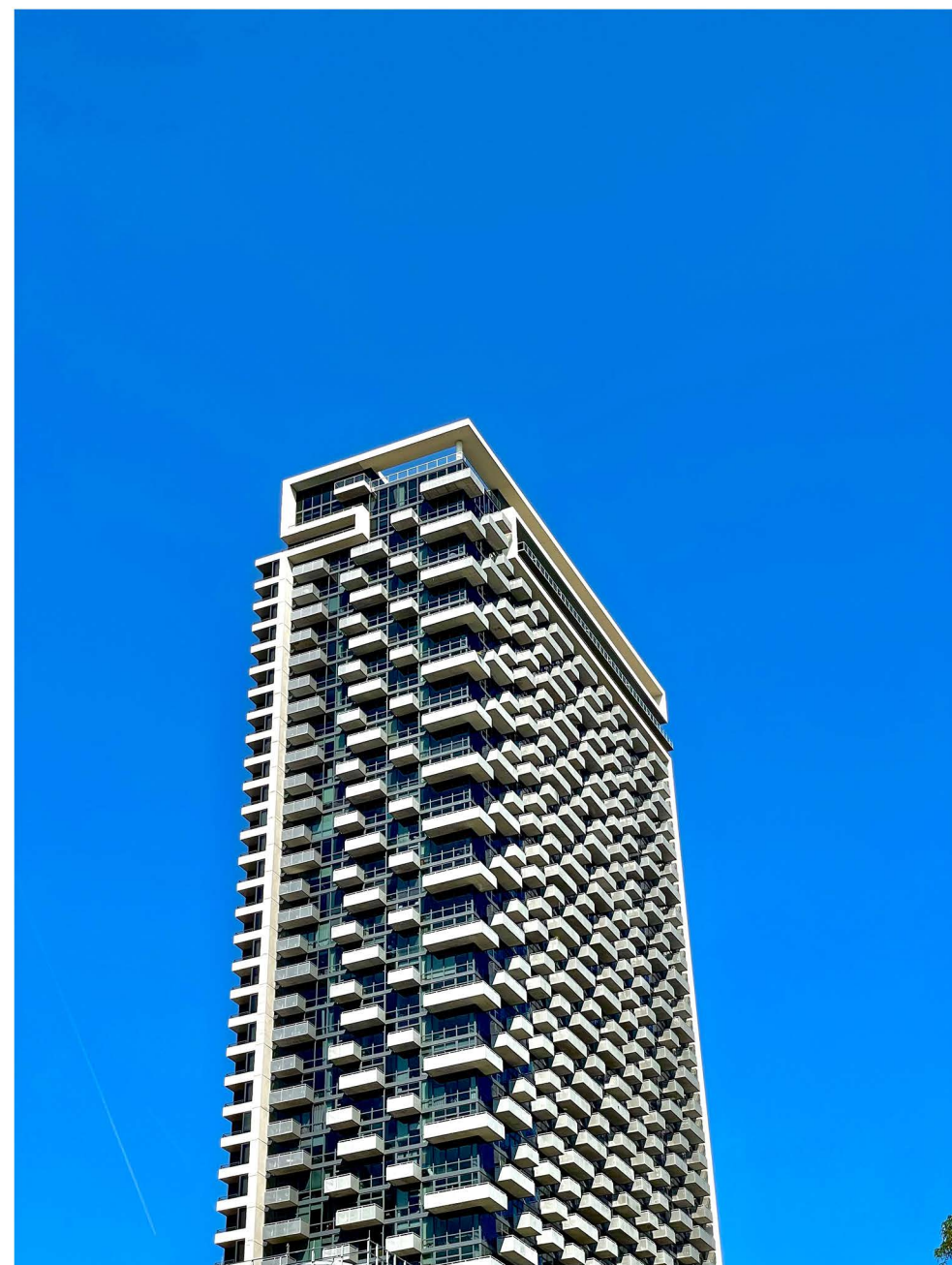
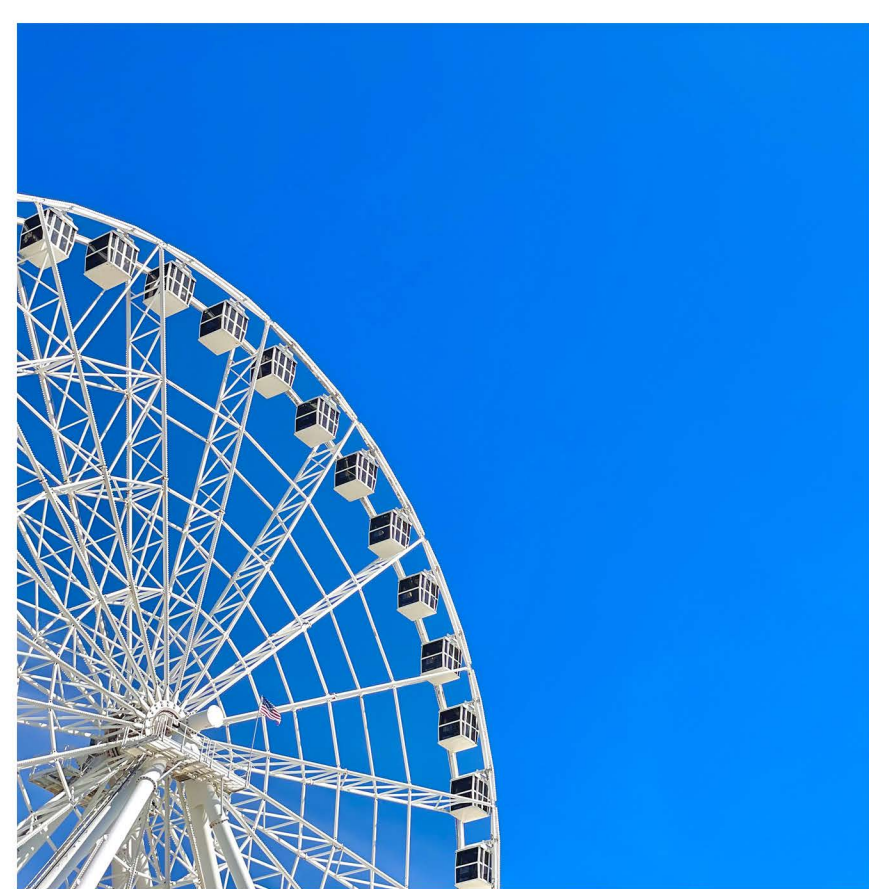
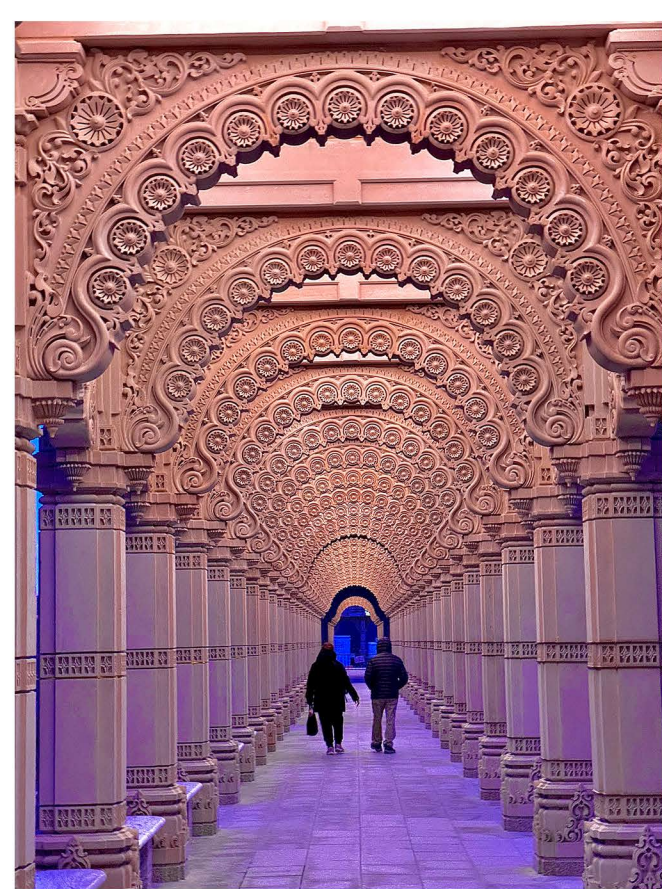
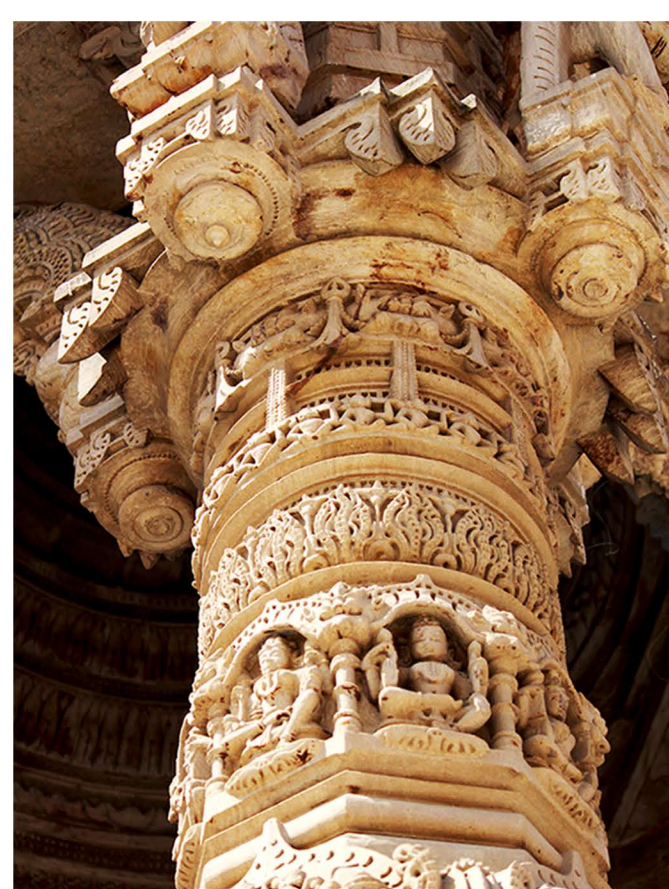
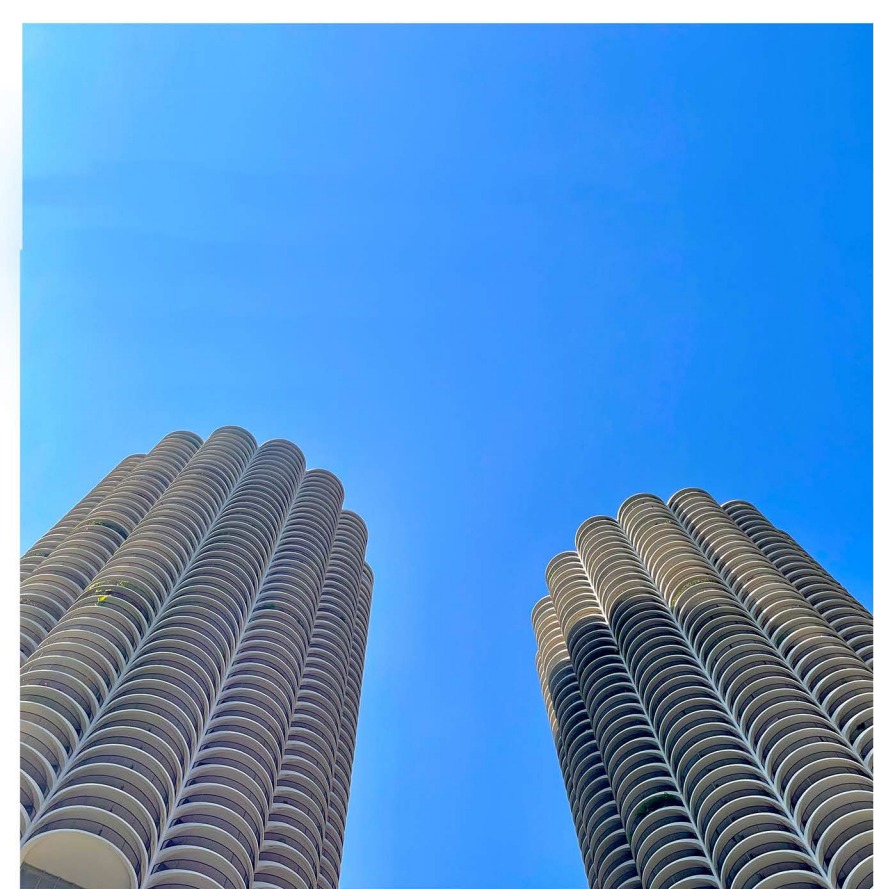


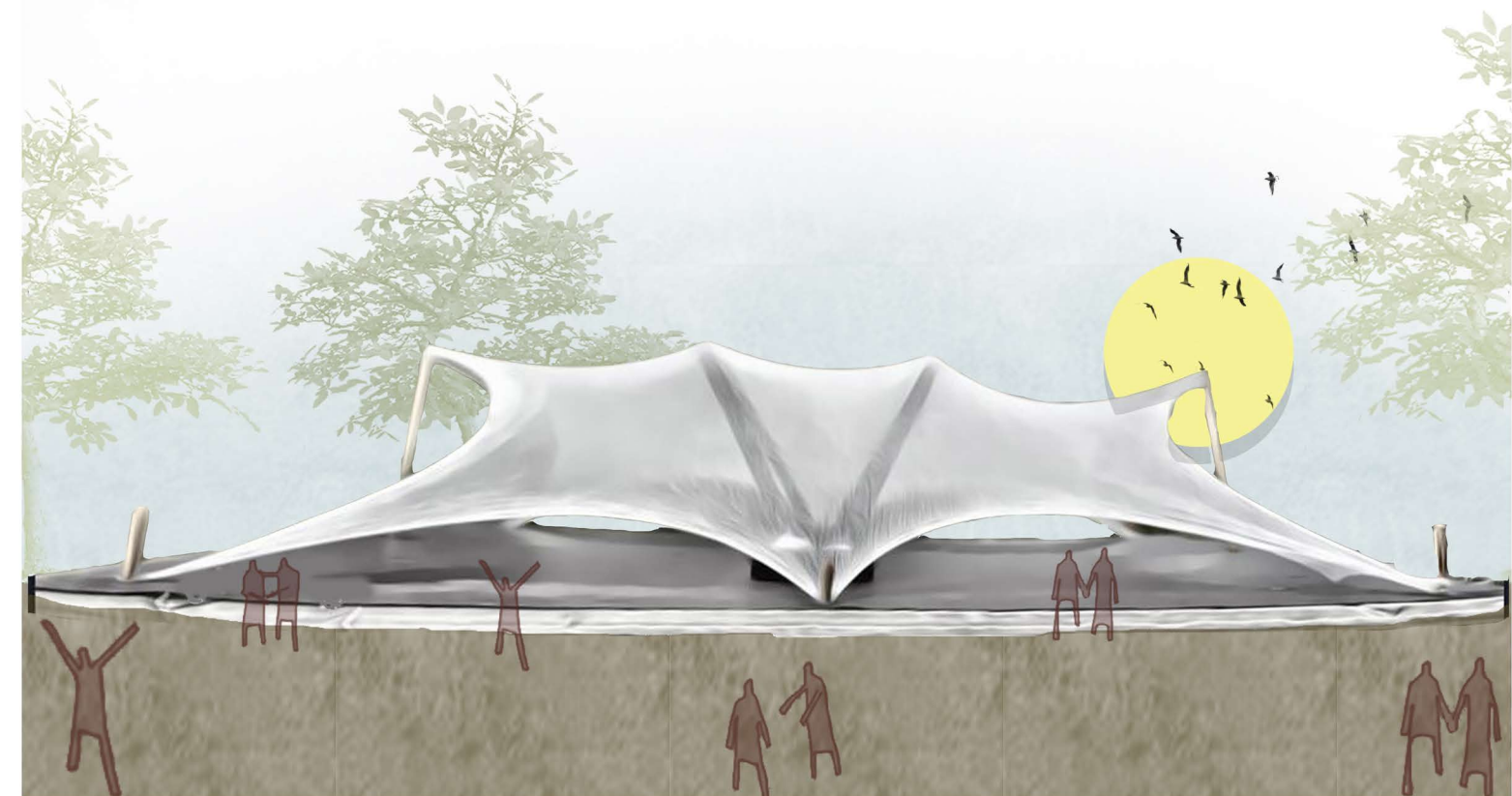
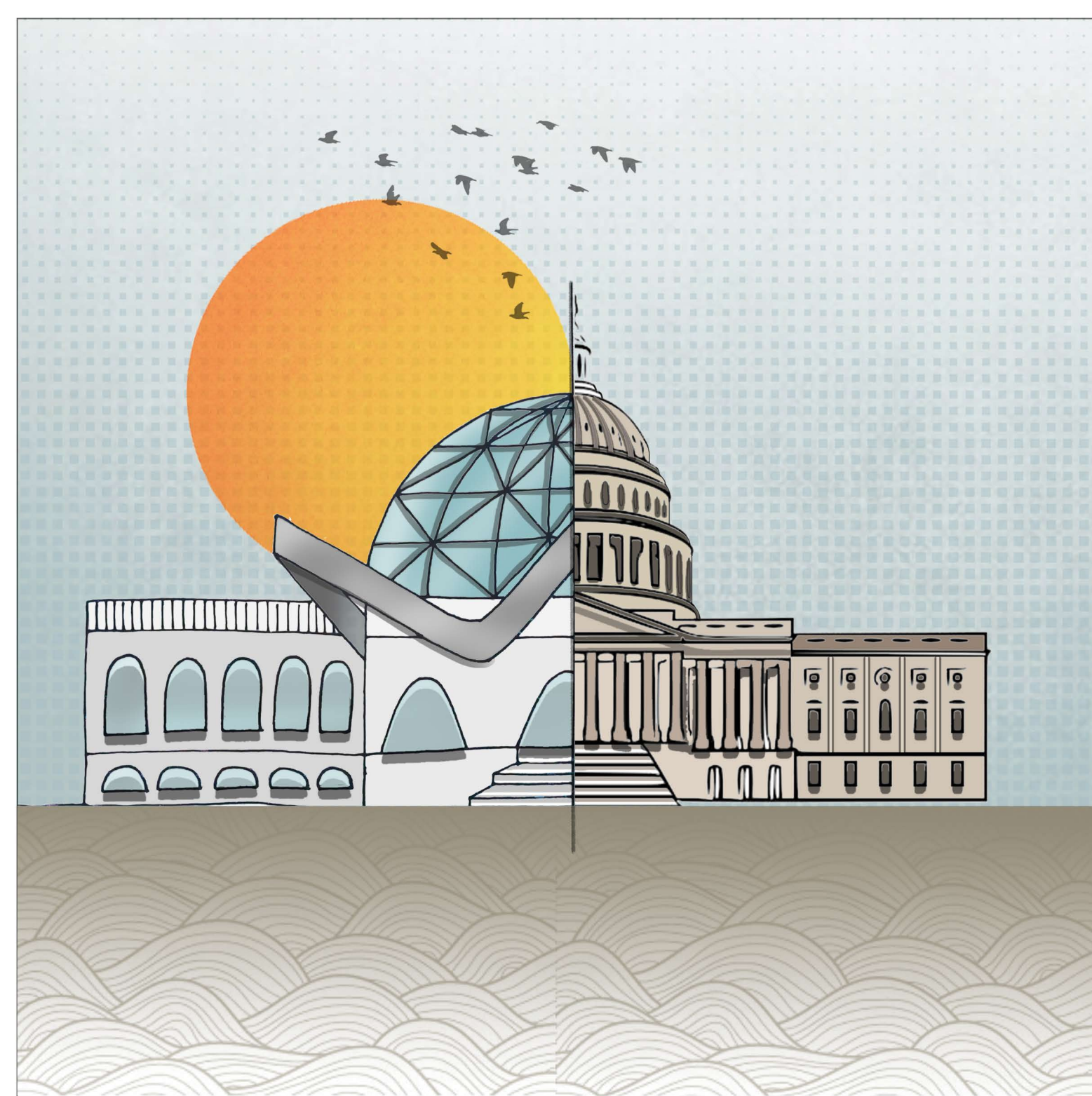
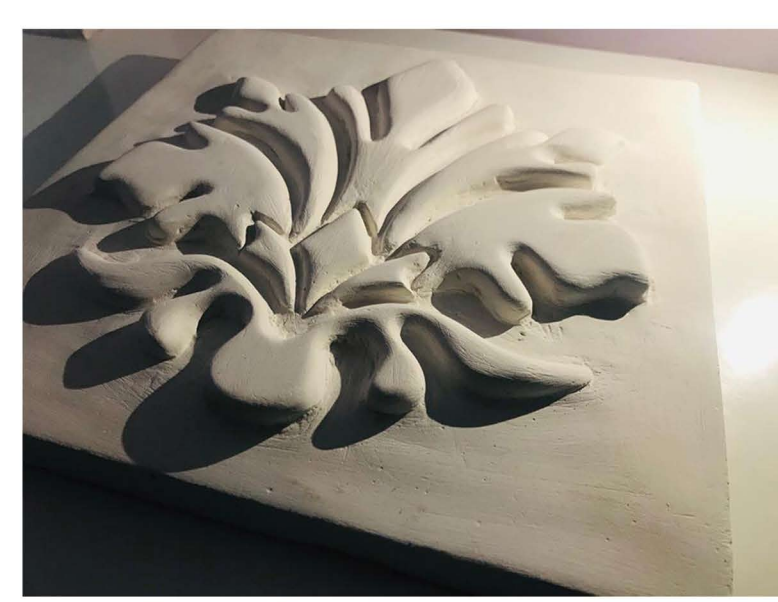
SECTION BB'





SKILLS





THANK YOU

I present a testament to my passion for innovative design, meticulous attention to detail, and dedication to excellence. Each project showcased within these pages reflects not only my technical skills but also my commitment to creating spaces that inspire, enrich, and endure. I invite you to explore these endeavors, each one a testament to my journey as an architect, and to envision the possibilities that lie ahead.

NIRVA PATEL

nirvap21@gmail.com