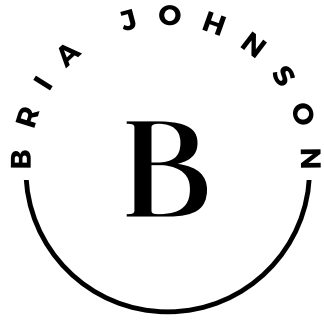


PORTFOLIO

Bria Johnson

academic



Bria Johnson

Architecture Student

education

B.A. Architectural Studies
May 2025

Michael Graves College, School of Public Architecture
Kean University, Union, NJ
Summa Cum Laude
Dean's list: Spring 2022 - Present

B.S. Biology
May 2016

Seton Hall University, South Orange, NJ

A.S. Biology/Pre-med
December 2013

Essex County College, Newark, NJ

skills

software

achievements

Adobe Creative Cloud: Illustrator,
InDesign, Photoshop

Microsoft Office: Word, PowerPoint, Excel

Software: Rhino, SketchUp, AutoCAD, Revit

President, NOMAS, Kean University
2023 – present

Representative, AIAS, Kean University
2023 – 2024

Student Licensing Advisor, Kean University
2023 – present

Vice President, Makerspace, Kean University
2024-present

Secretary, AIAS, Kean University
2023 – 2024

McNair Scholar

Awarded Scholarship, 2024-Present

Cougar Investigator Research Challenge Grant

Kean Shark Tank
Second Place Winner, February 29, 2024

Project on Dezeen School Show
Dezeen Magazine, October 3, 2023

2023 Licensing Advisors Summit
NCARB Kansas City, August 3-5, 2023

Tau Sigma National Honor Society
Member, 2023 - Present

architecture experience

Architectural Intern

Petry Engineering, NJ, 5/2024 - 8/2024

Supported design development by assisting in drafting floor plans, elevations, and sections, conducting research on materials and codes, and preparing project documentation.

Participated in site visits to ensure accurate implementation of designs, collaborated with architects and engineers to coordinate project details, and contributed to client presentations by creating visual materials.

Actively sought opportunities to apply architectural theory in real-world projects and enhance professional skills.

Construction Manager Intern

Bri-K Construction, NJ, 6/2023 -10/2023

Coordinated on-site activities, collaborating with contractors and construction teams while overseeing quality control and ensuring adherence to design specifications.

Developed skills in project planning, budget management, risk mitigation, and contract administration, contributing to the successful execution of construction projects.

work experience

Makerspace Assistant

Kean University, Union, NJ, 2023 – Present

Creating and teaching workshops tools, methods, and projects
Consulting and mentoring students, Providing basic and advanced tech support, Train students on all equipment within the space, and create training guidelines for each equipment

Coordinator/Pharmacy Technician

Pharmscript, Somerset, NJ, 2020 – 2022

Supervised and trained a team of pharmacy technicians, provided guidance, and ensured adherence to standard operating procedures

Streamlined workflow by implementing efficient inventory

Pharmacy Technician Coordinator

Corizon Health, Paterson, NJ, 2018 – 2019

Performed essential training activities for new team members related to new medical technologies, prescriptions, medication storage, customer emergencies, and lab safety to ensure new team members felt confident dealing with potentially unfamiliar situations and equipment

Pharmacy Technician, CVS Pharmacy

CVS Pharmacy, Maplewood, NJ, 2015 – 2018

Utilized organizational abilities to fill prescriptions, communicate with doctors, and keep track of medications within a fast-paced workplace environment

Developed processes that tracked employee hours to determine gaps in productivity and discover missing medications; saved over \$3,000 in end-of-month medication sweep

jobria@kean.edu

jjohnsonbria@gmail.com

www.linkedin.com/in/briajohnson-arch

<https://jjohnsonbria.wixsite.com/bria-johnson>

Contents



The Library



The MeadowFold

1 The Library

Location: New York, New York

Semester: 4

Year: 2nd, 2023, April

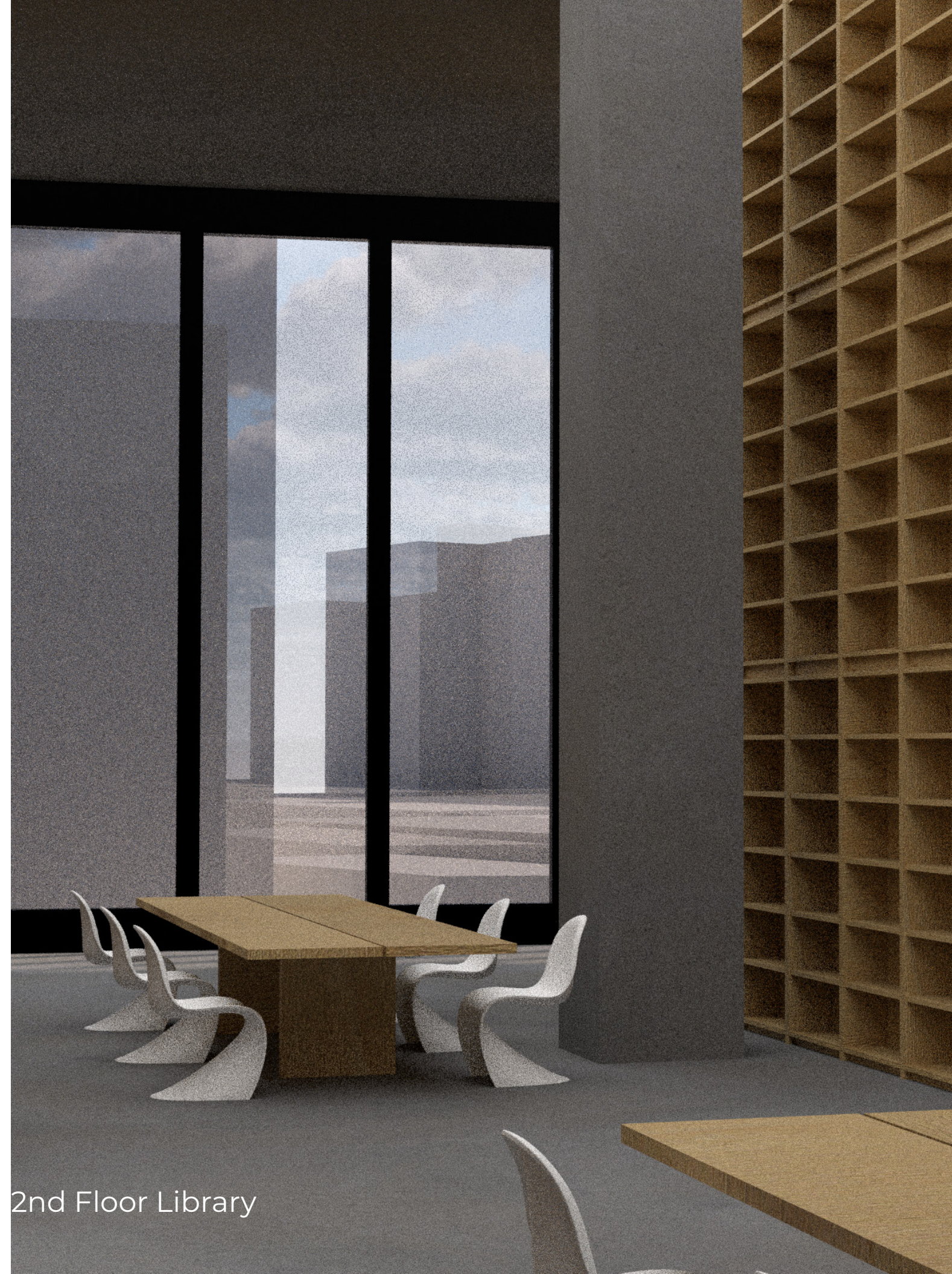
Professor: Darion Washington

Objectives: Have you ever pondered the balance between public and private spaces? Do certain environments make you feel welcomed, or do they create a sense of space of exclusivity? These questions formed the foundation of my library design project, where I explored the dynamic relationship between public and private libraries.

The aim was to craft a space that fosters inclusivity and serves as a hub for the entire community. The design integrates seamlessly with its surroundings, prioritizing accessibility and functionality. Beyond books, the library extends its purpose by incorporating diverse community-centered spaces, such as a café, a farmer's market, and a teaching kitchen.

This multi-purpose library creates an atmosphere of collaboration, learning, and interaction, reflecting the evolving needs of modern communities. It's not just a library; it's a place to connect, grow, and share experiences.

Workflow: Diagrams - Physical Modeling - Rhino - Illustrator - Vray - Photoshop - InDesign



2nd Floor Library

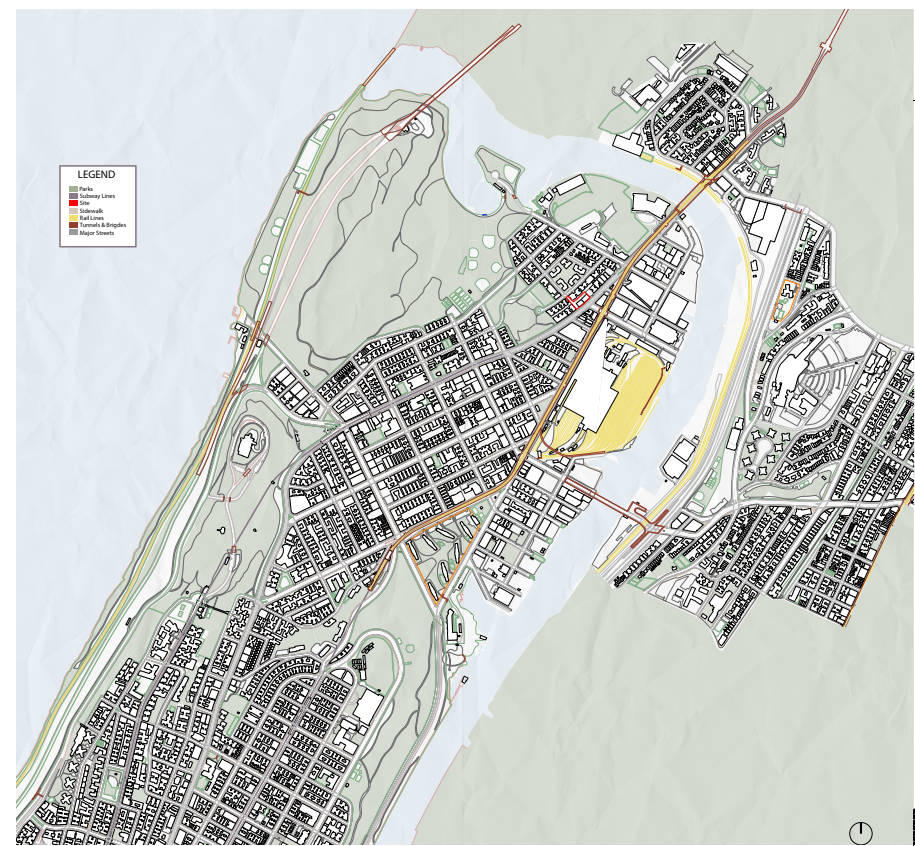


Site Map

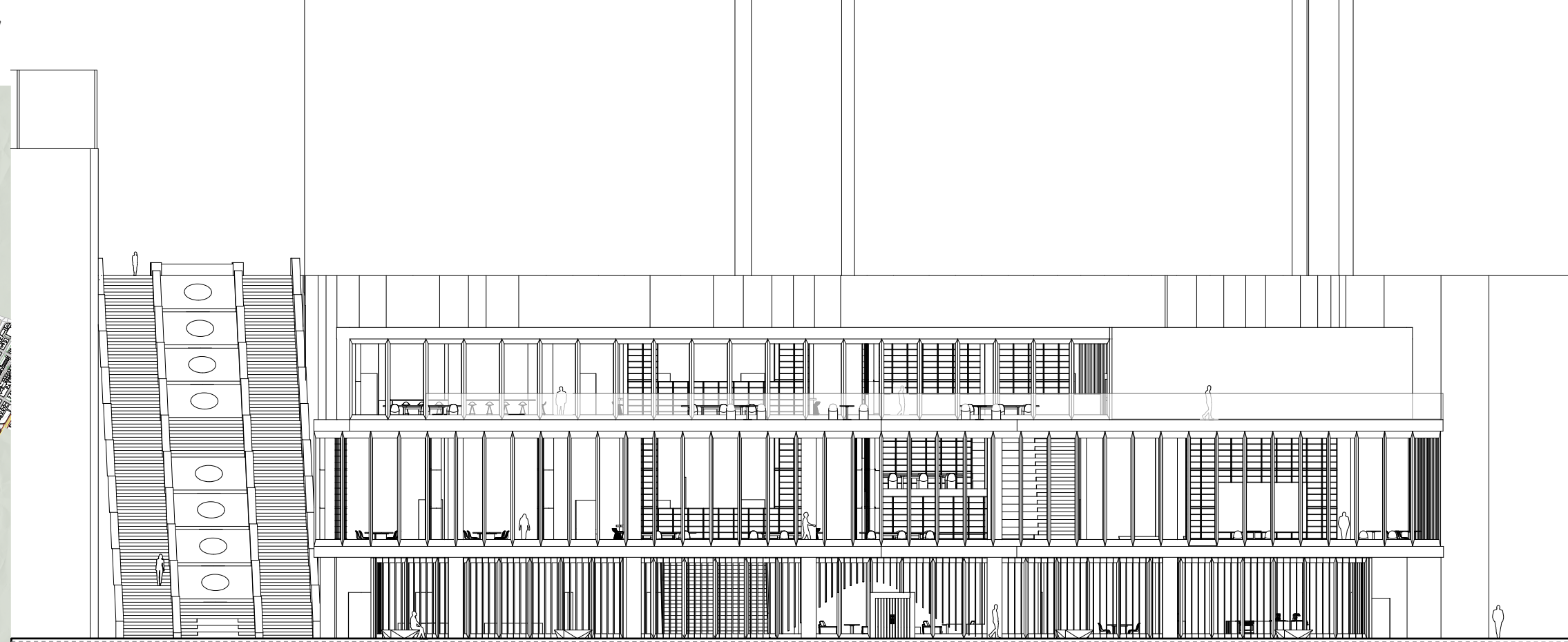
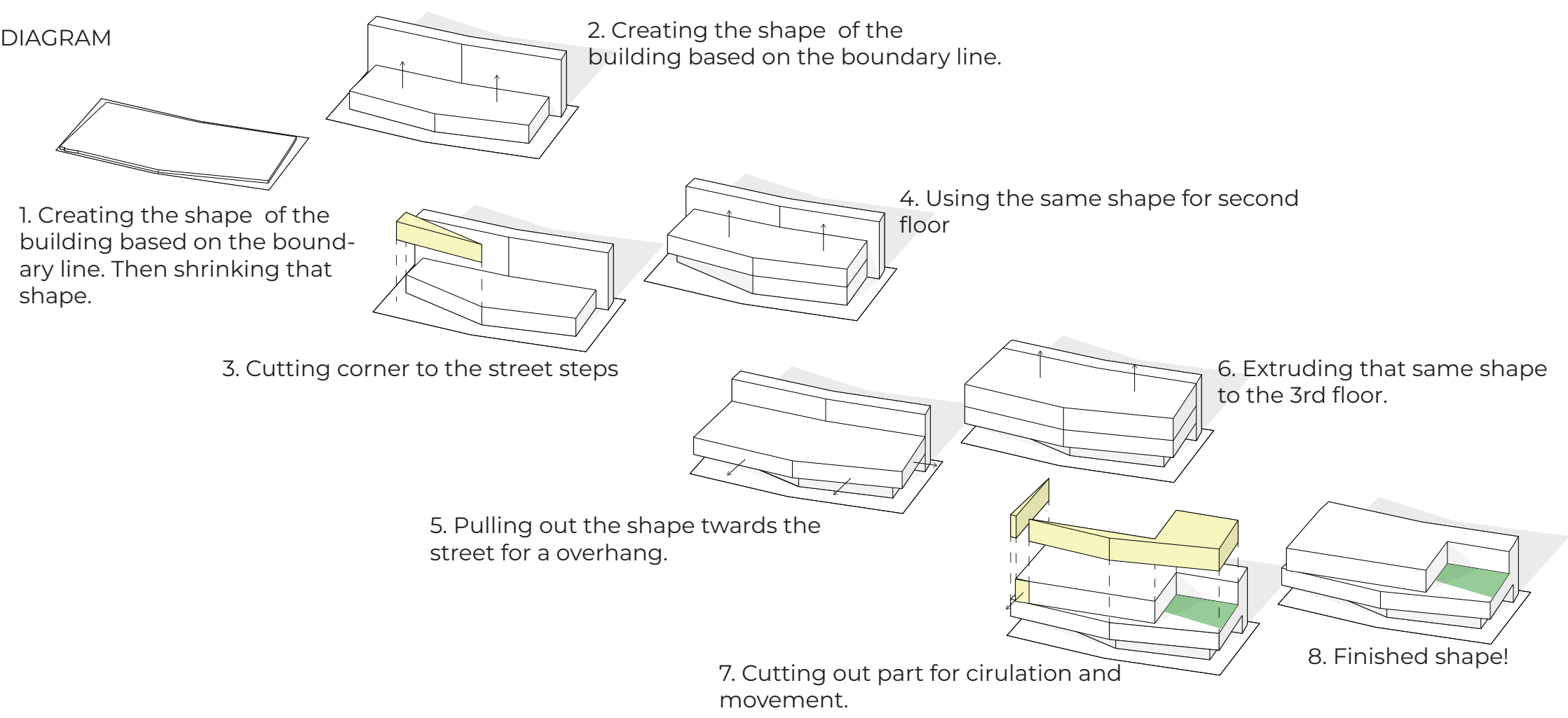
The analysis highlights key contextual elements, including parks, subway lines, major streets, rail lines, tunnels, bridges, and pedestrian sidewalks, to understand the site's potential and challenges.

Located within the city, the site benefits from its proximity to public transportation, with nearby subway lines and rail connections ensuring accessibility for a wide range of users. Major streets and bridges surrounding the site provide vehicular access, while pedestrian pathways and sidewalks facilitate walkability and encourage community engagement. Parks nearby serve as green lungs, offering opportunities for outdoor relaxation and connecting the library to the city's natural elements.

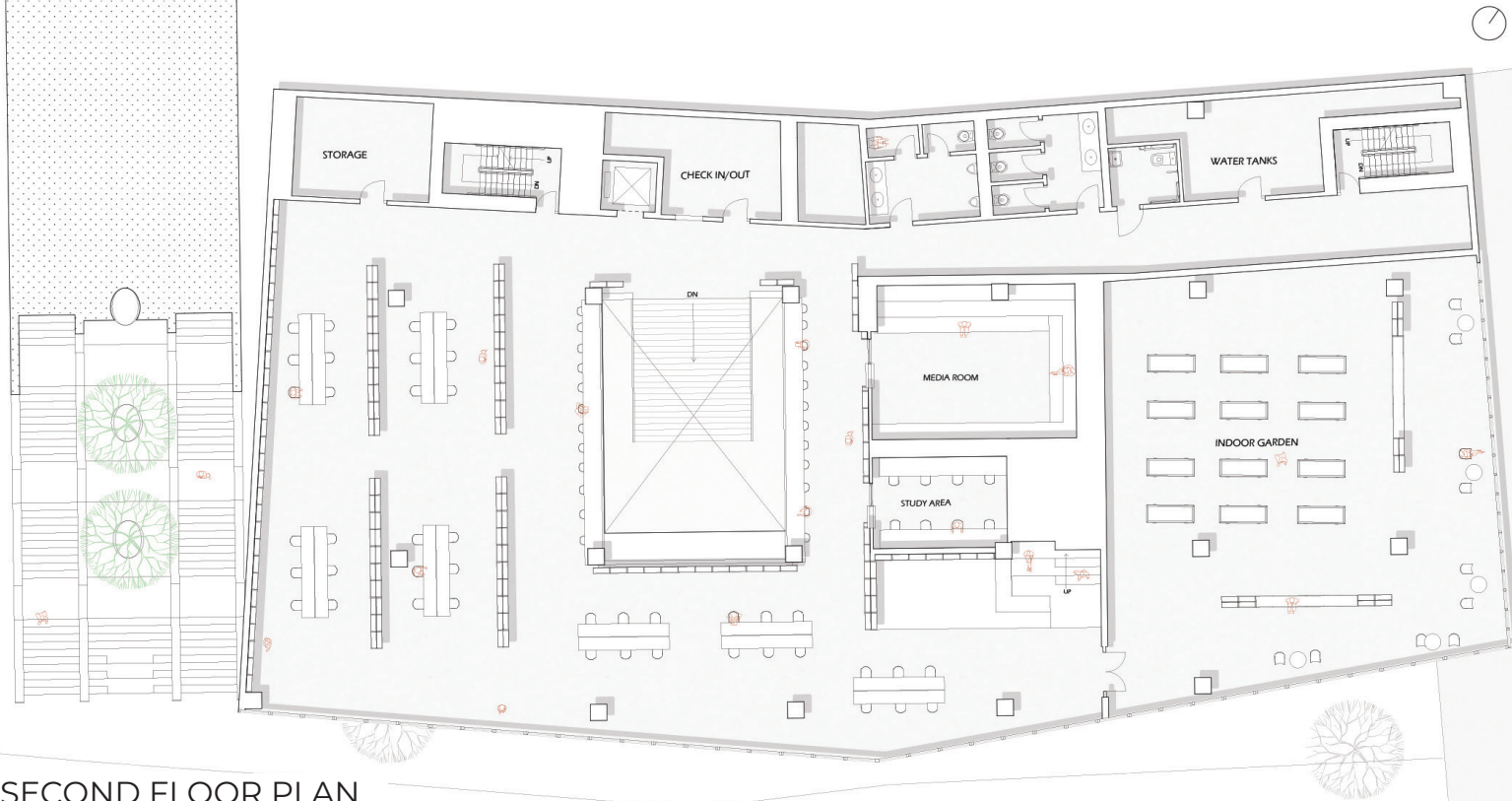
The analysis also identifies potential challenges, such as managing the heavy flow of urban traffic and mitigating the noise and vibrations from nearby tunnels and rail lines. By integrating these factors into the design process, the library becomes a well-adapted, inclusive space that enhances its relationship with the surrounding infrastructure and community. This site analysis provides a foundation for creating a library that is both functional and deeply embedded in the vibrant, interconnected landscape of New York City.



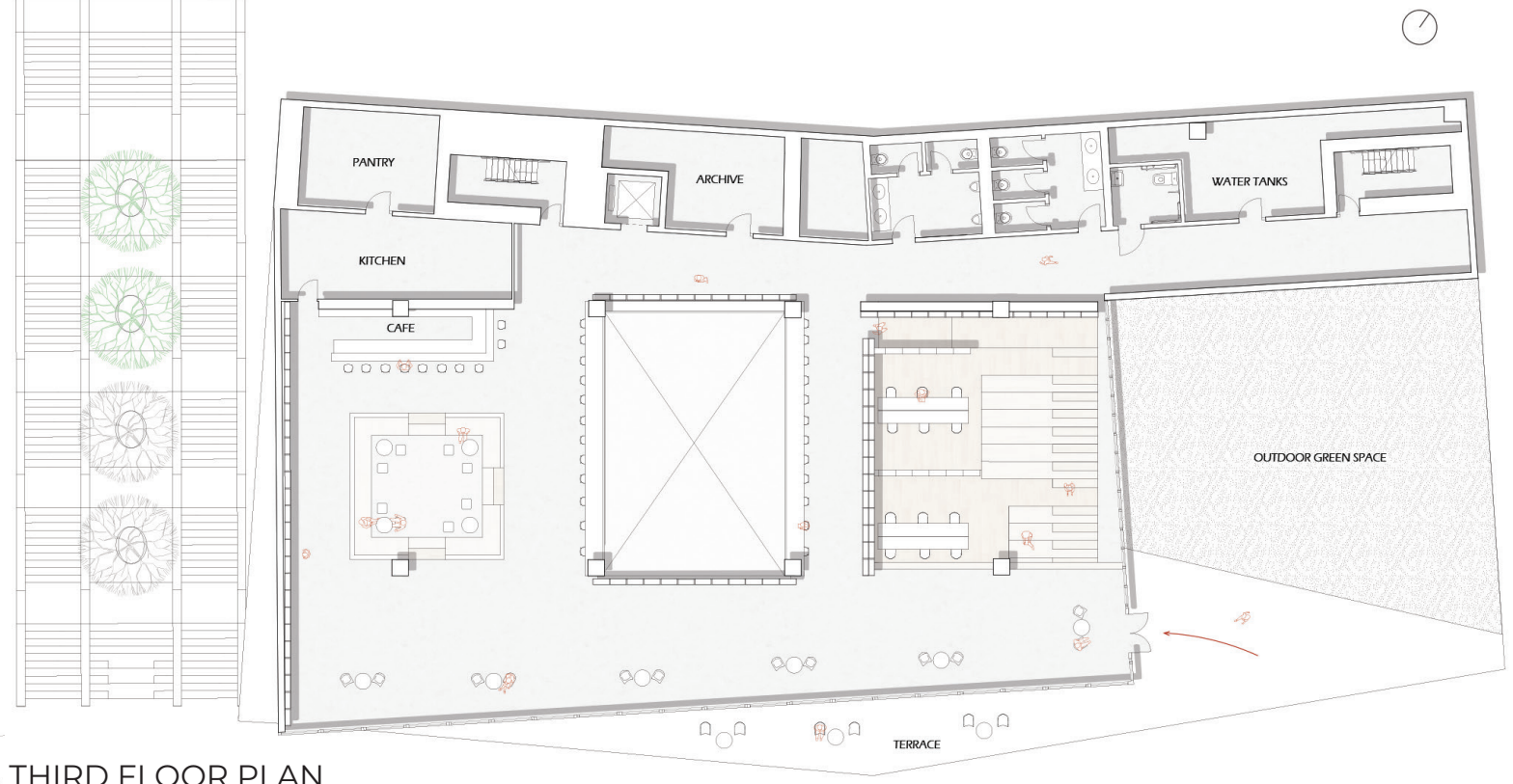
DIAGRAM



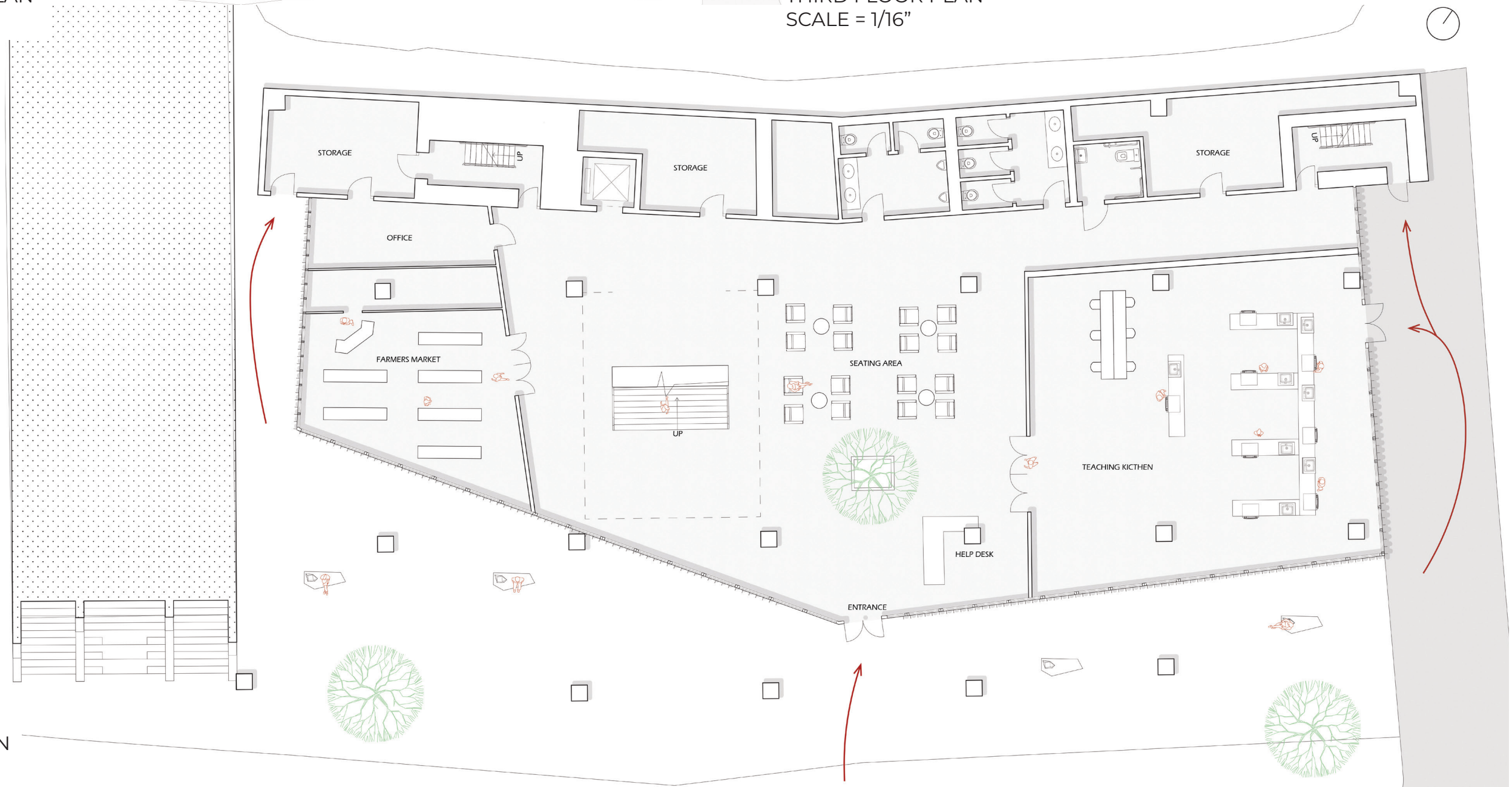
ELEVATION
SCALE = 1/16"



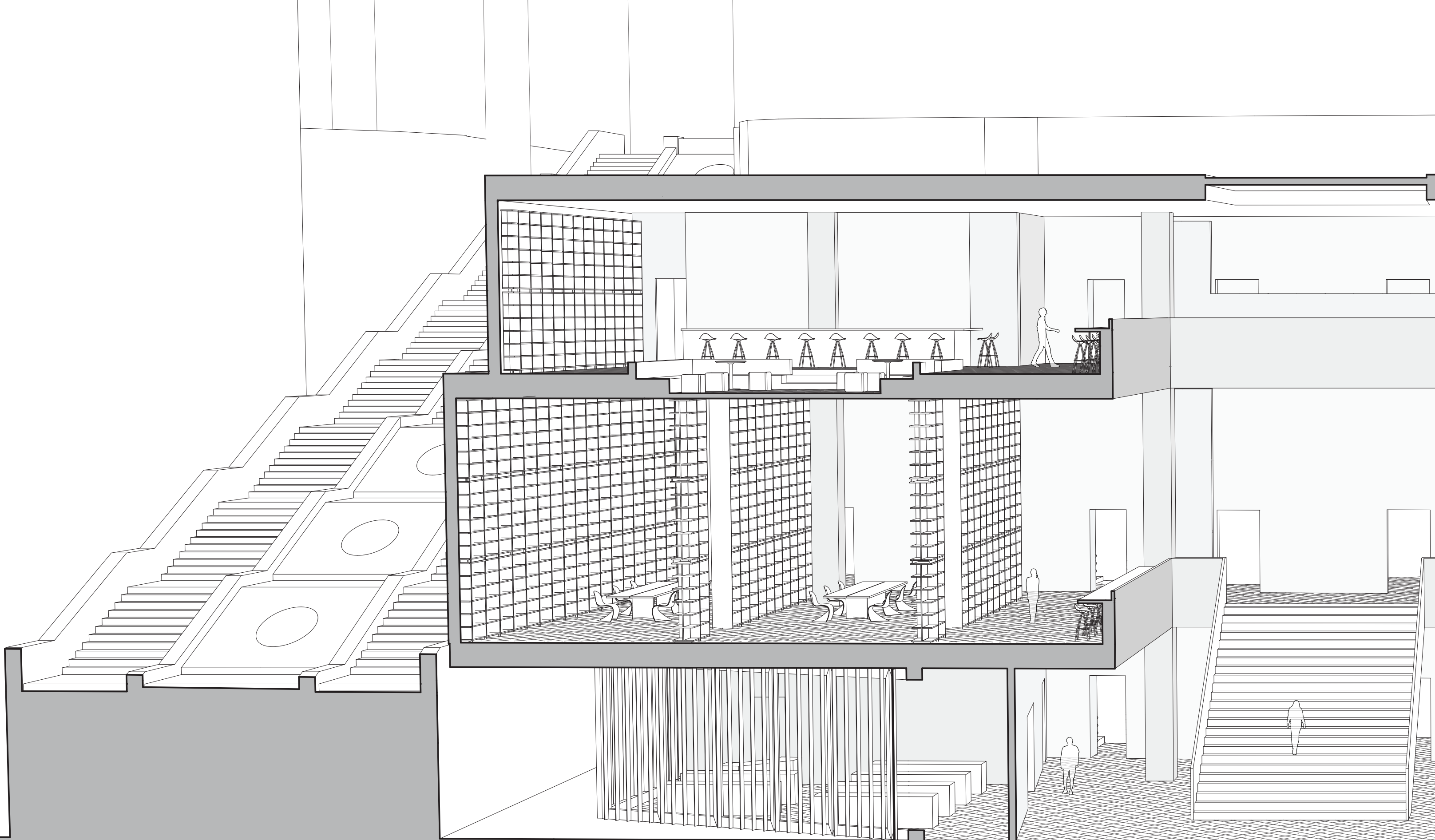
SECOND FLOOR PLAN
SCALE = 1/16"



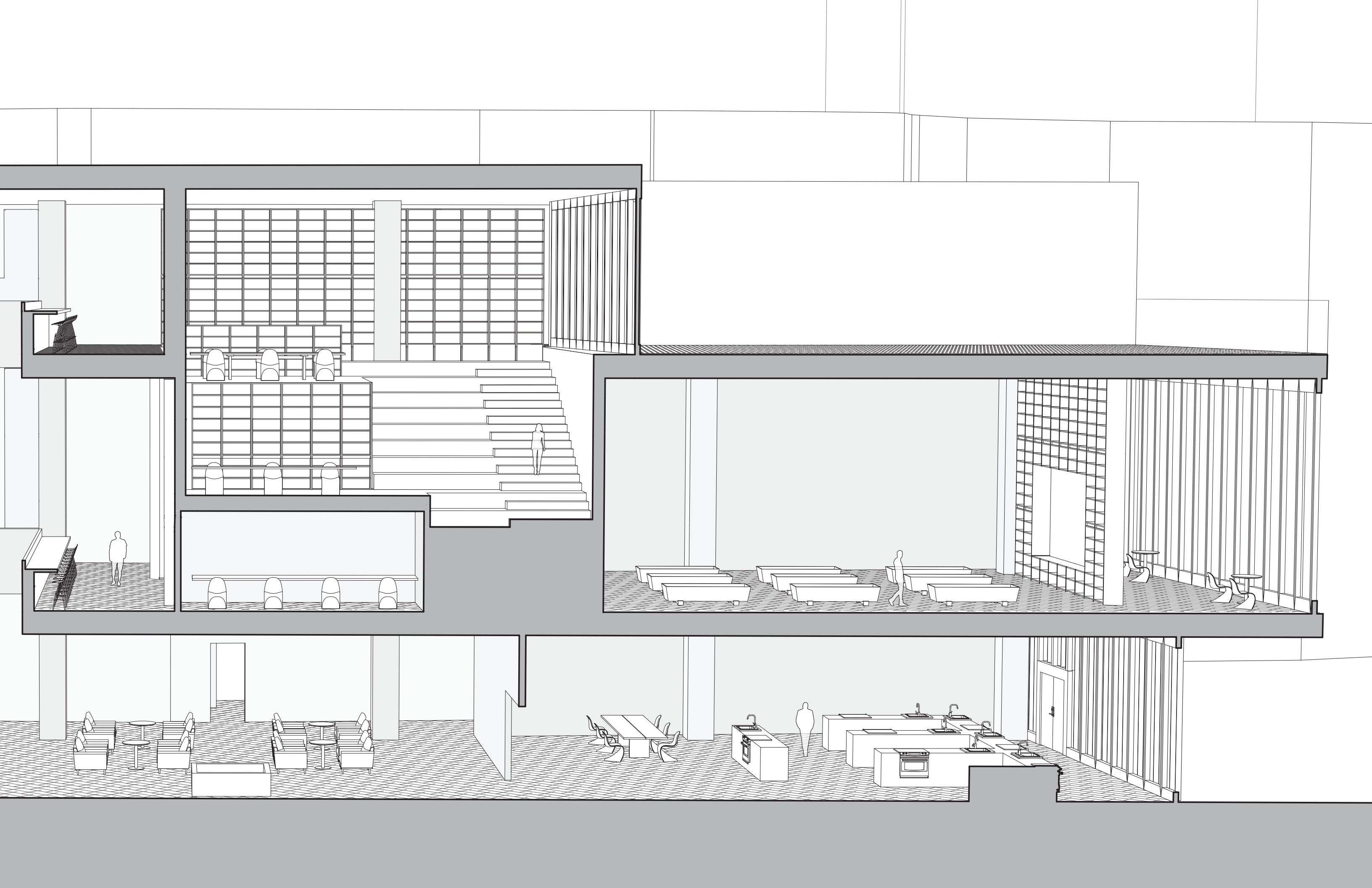
THIRD FLOOR PLAN
SCALE = 1/16"



GROUND FLOOR PLAN
SCALE = 1/16"



SECTION PERSPECTIVE
SCALE = 1/8"



2

The MeadowFold

Location: Elizabeth, New Jersey

Semester: 7

Year: 4th, 2024, December

Professor: Michelle Komornik

Objectives: This project was steered around permaculture and third spaces and how can we create the two in a harmoninuous way. The Meadowfold is a transformative architectural project that reimagines the relationship between built environments and the natural world. Rooted in the principles of fluidity, connection, and sustainability, this design seeks to harmonize human activity with the organic rhythms of nature.

By drawing inspiration from the bold geometries of the Seattle Library, the flowing contours of Chinese rice fields, and the land-sensitive practices of New Forest Farm in the USA, the Meadow Fold transcends conventional architecture to become a living, evolving space. It is a place where nature and community converge, fostering growth, learning, and a profound sense of belonging.

Workflow: Diagrams - Physical Modeling - Rhino - AutoCad - Illustrator - Photoshop - InDesgin

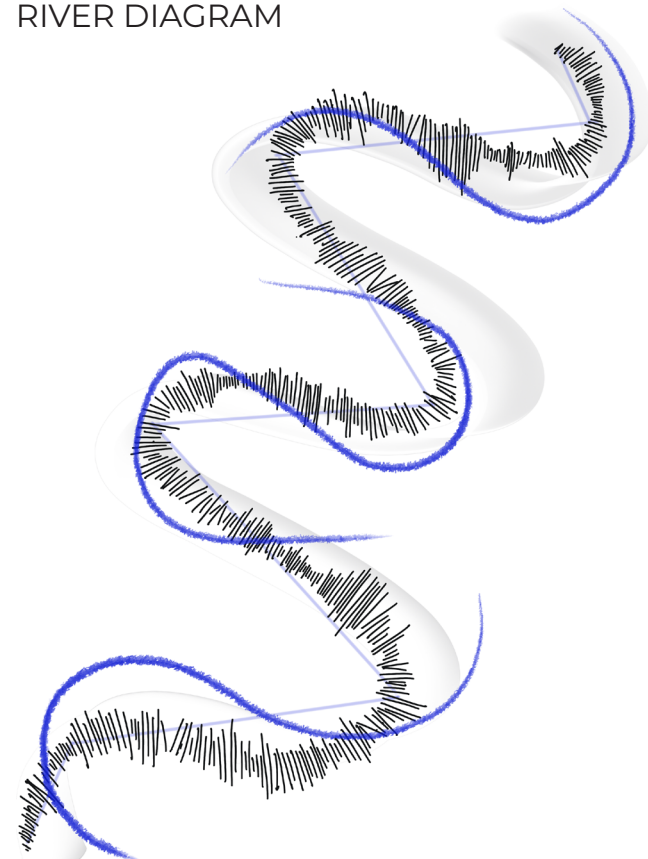


Between The Buildings



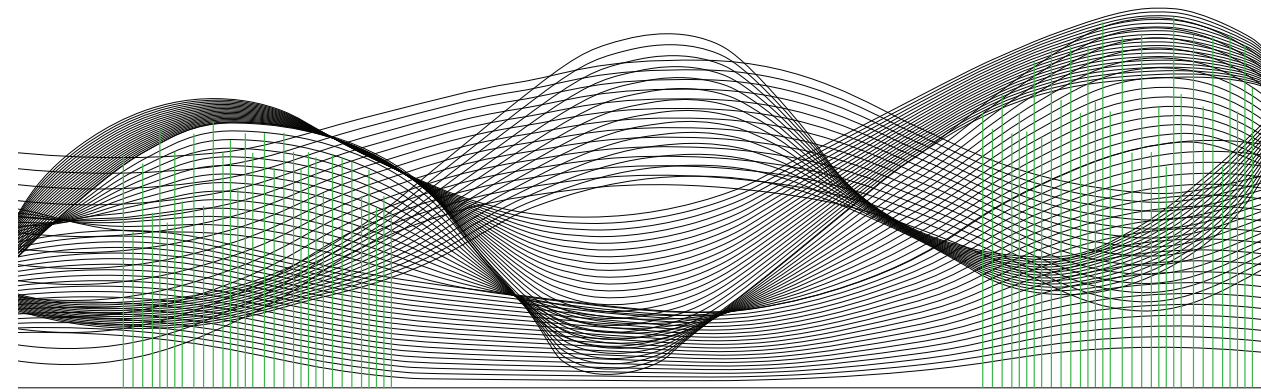
Main Building

RIVER DIAGRAM

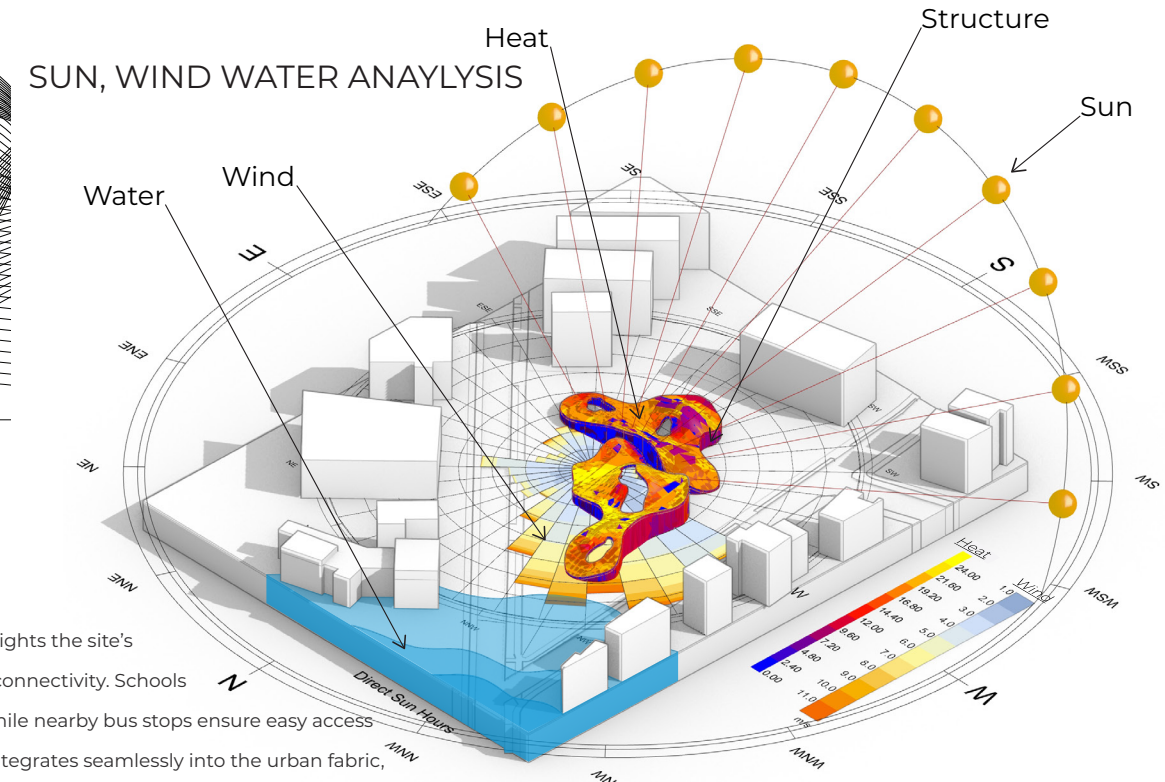


River Flow Diagram: Another diagram focuses on the river that flows through the farm, showcasing three distinct types of organic river movements overlapping. This analysis highlights the complexity of water flow and its influence on the surrounding landscape, offering a unique perspective on how to incorporate natural water systems into design.

TREE & WIND DIAGRAM



Tree and Wind Diagram: I created a diagram that examines how the placement of trees impacts wind movement across the site. This study visualizes the dynamic relationship between tree density, positioning, and wind patterns, emphasizing how nature can create a flow or movement within a landscape. (windbreaks or microclimates)

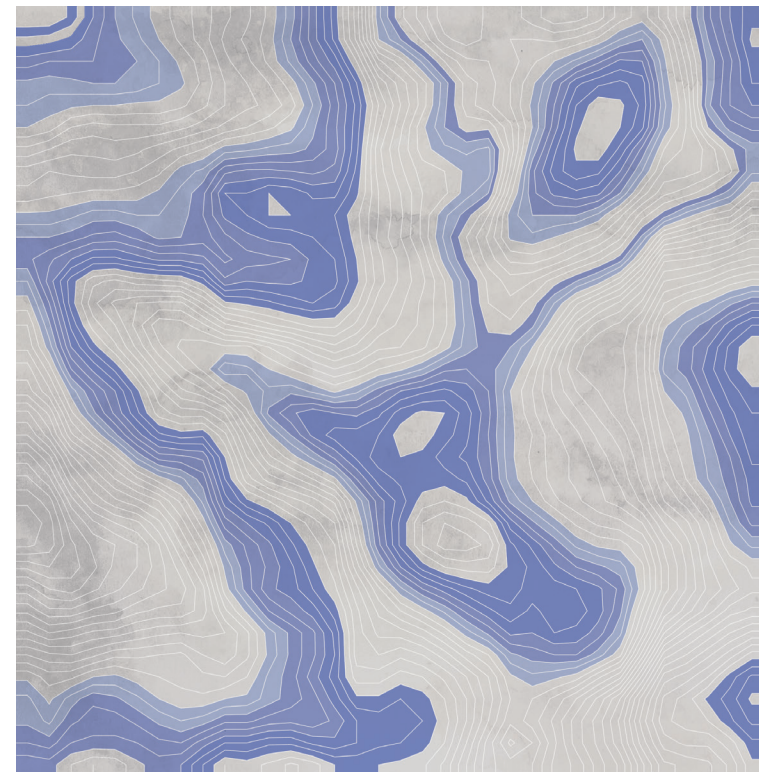


STREETSCAPE COLLAGE

Elements such as schools, parks, and bus stops. This analysis highlights the site's relationship with its surroundings, emphasizing accessibility and connectivity. Schools and parks were identified as focal points of community activity, while nearby bus stops ensure easy access via public transportation. This mapping ensures that the design integrates seamlessly into the urban fabric, fostering interaction and promoting walkability within the neighborhood.



CONTOUR & SUNLIGHT DIAGRAM



Contour and Sunlight Diagram: Inspired by rice fields, I analyzed the contours of the land and mapped the points where sunlight interacts with these contours most intensely. This study connects topography with solar exposure, revealing how natural lighting varies throughout the site and how it can inform spatial planning and design.

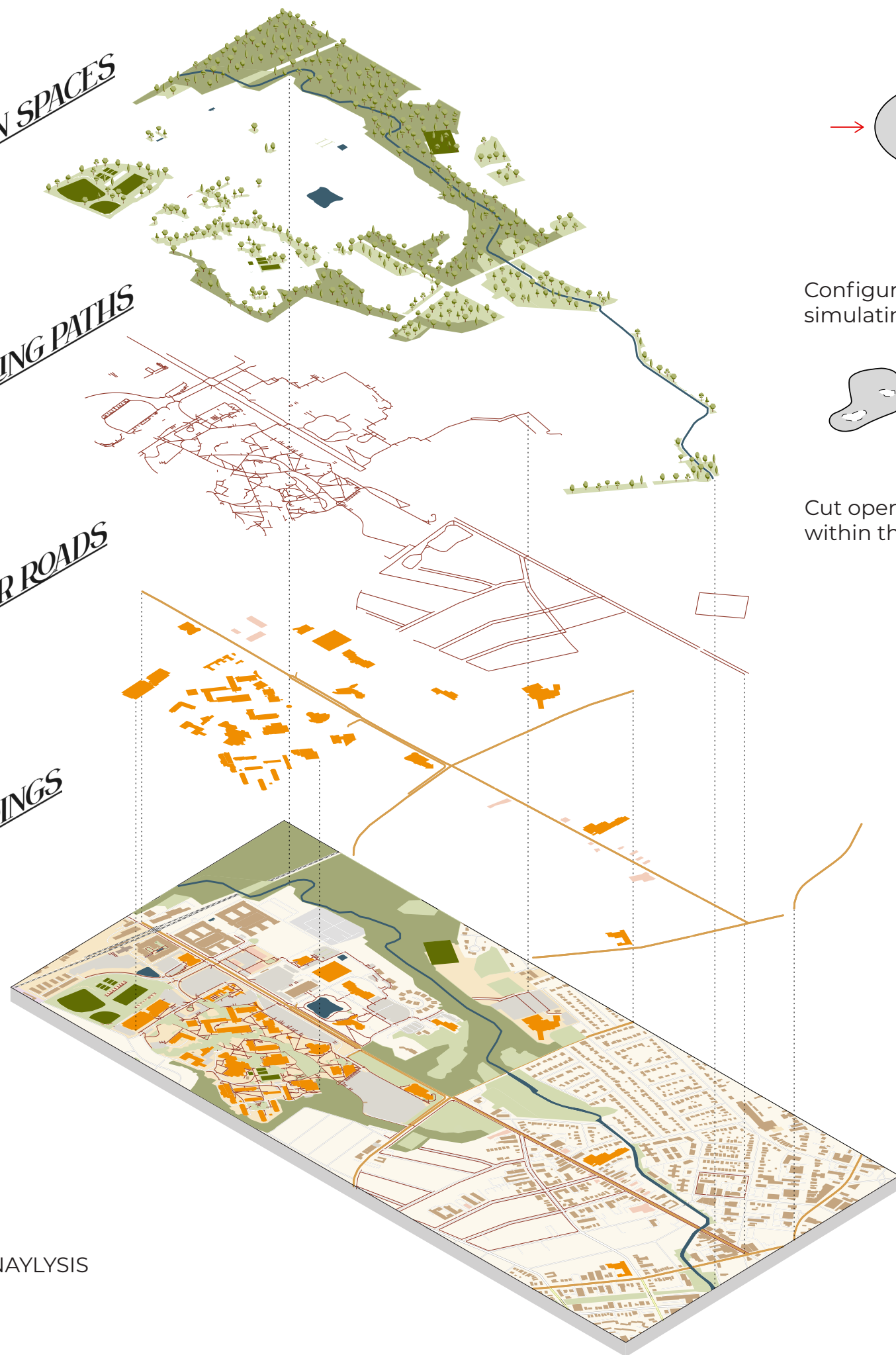
GREEN SPACES

WALKING PATHS

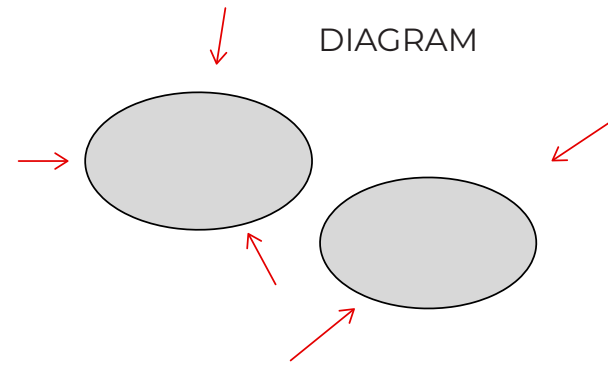
MAJOR ROADS

BUILDINGS

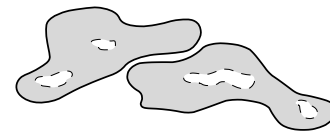
SITE ANALYSIS



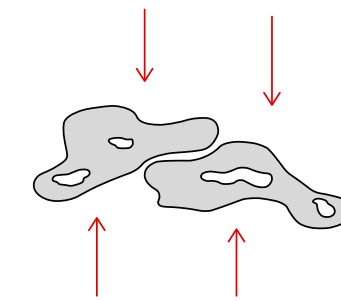
DIAGRAM



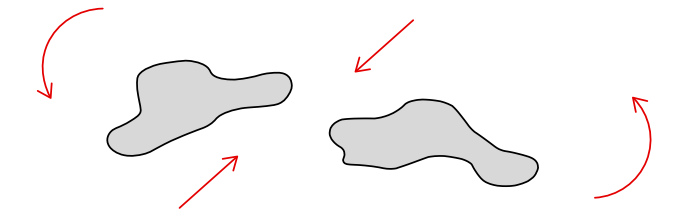
Configuring a fluid movement by simulating folding on the outside.



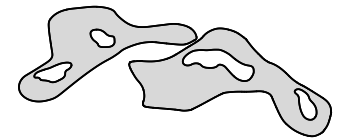
Cut openings to overlap connections within the shapes.



Push and pull on points on surface organic distortion.

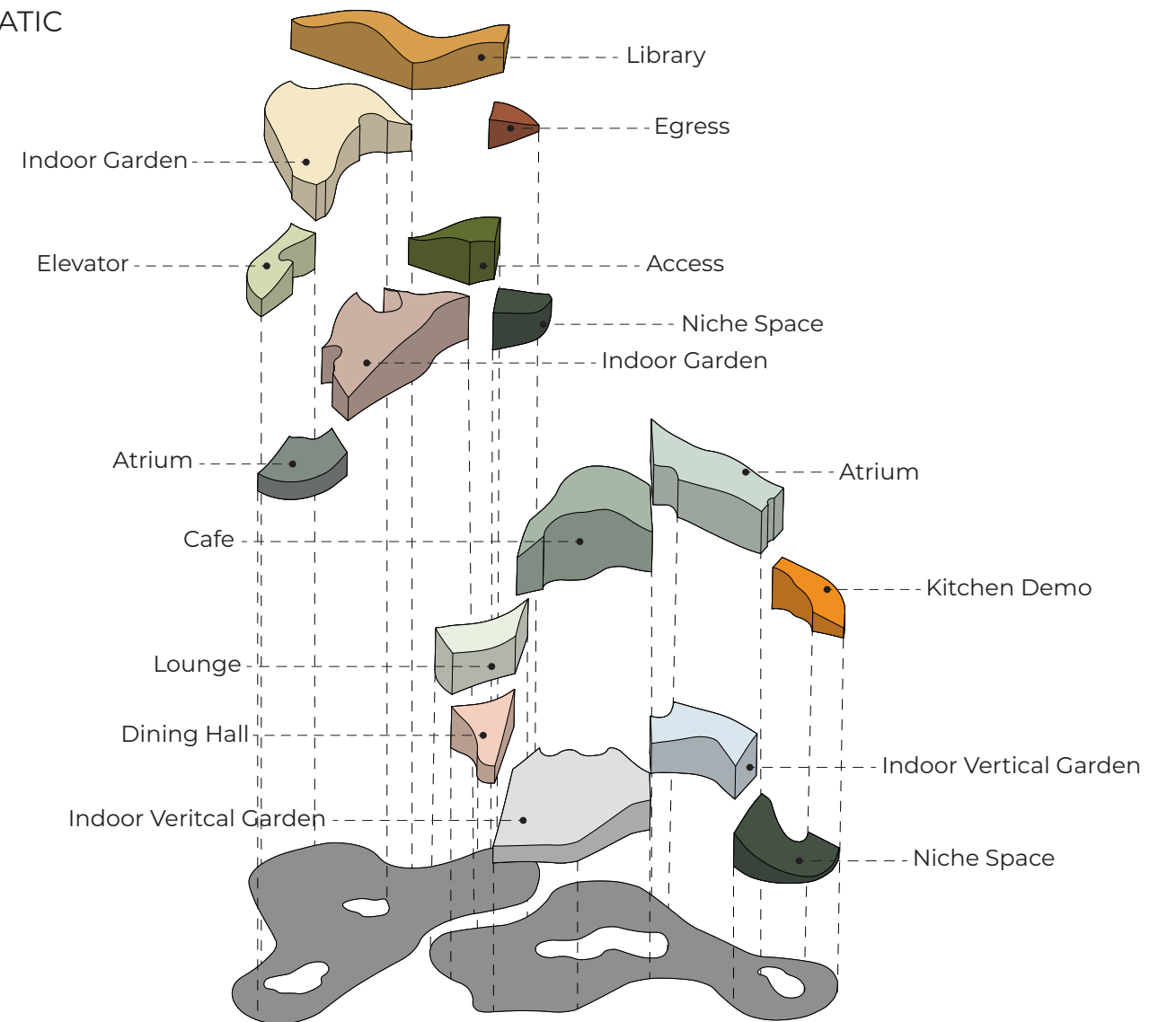


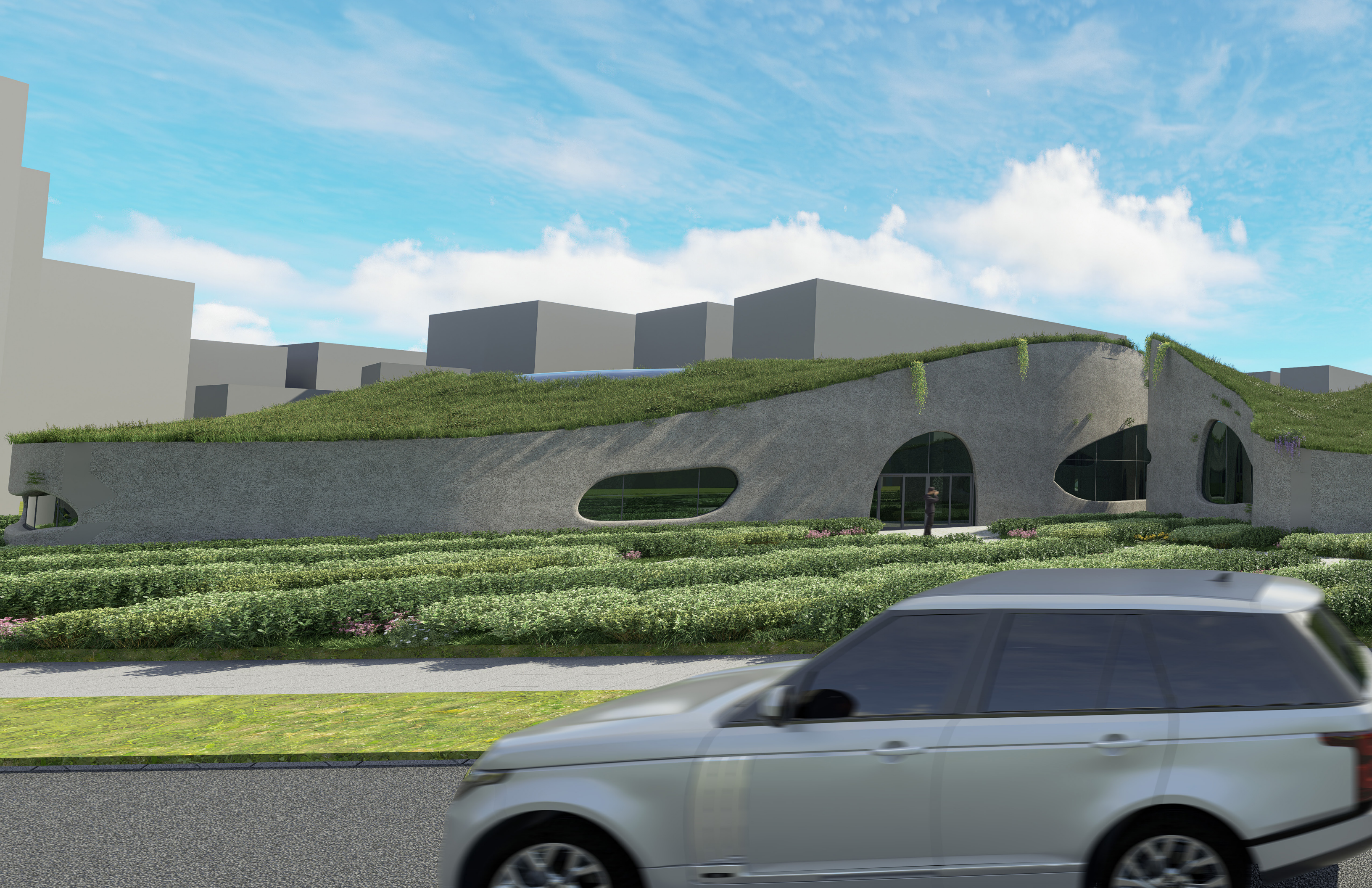
Rotating to find shapes to find connection between the two shapes.

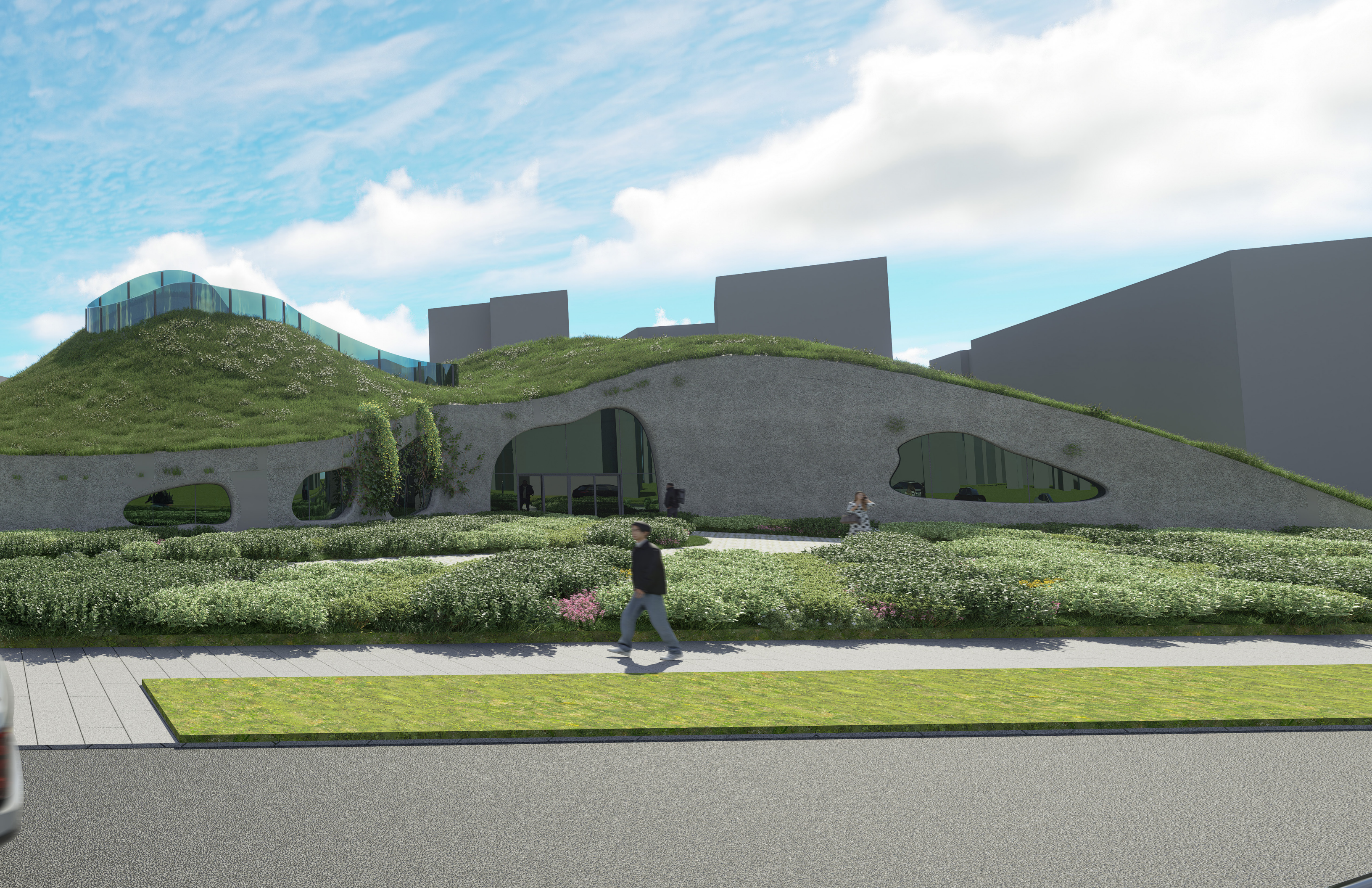


Finished shape!

DIAGRAMMATIC AXON







GROUND FLOOR PLAN
SCALE = 1/16"

- 1. RICE FIELDS
- 2. PROCESING
- 3. COURTYARD
- 4. CAFE
- 5. TEST KITCHEN
- 6. COMMUNITY KITCHEN
- 7. BATHROOMS
- 8. LIBRARY/STUDY AREA
- 9. NICHE AREA
- 10. LECTURE HALL
- 11. BATHROOMS
- 12. KIDS AREA
- 13. KIDS CLASSROOMS
- 14. OFFICE
- 15. BATHROOM



SECOND FLOOR PLAN
SCALE = 1/32"

- 16. OFFICE
- 17. SEATING AREA

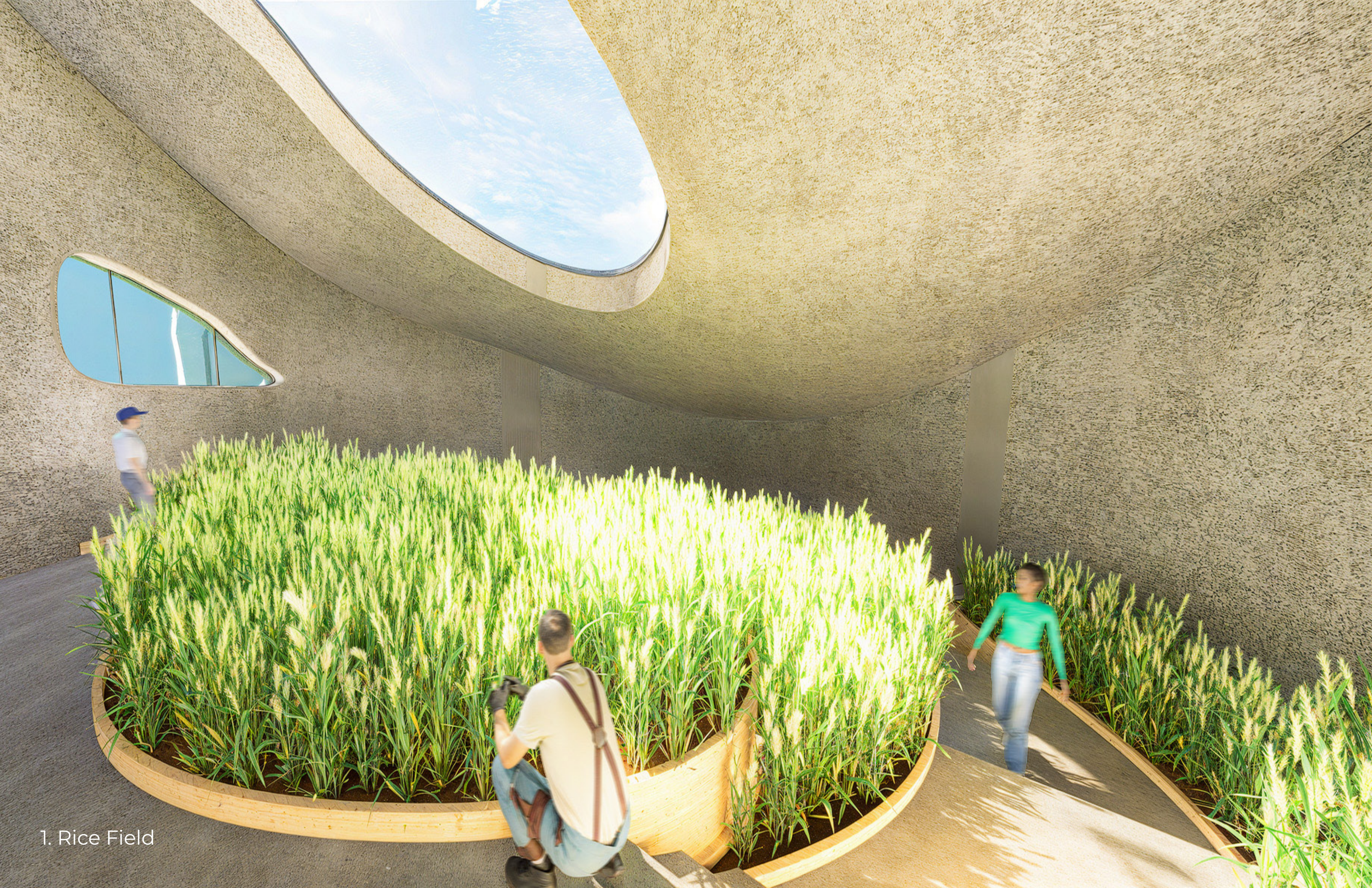


SITE PLAN
SCALE = 1/32"





3. Courtyard

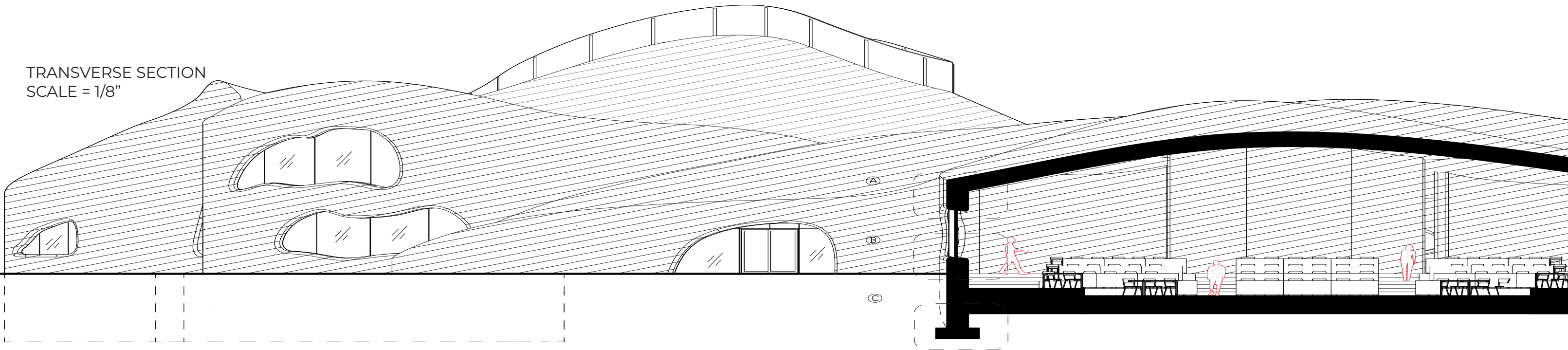


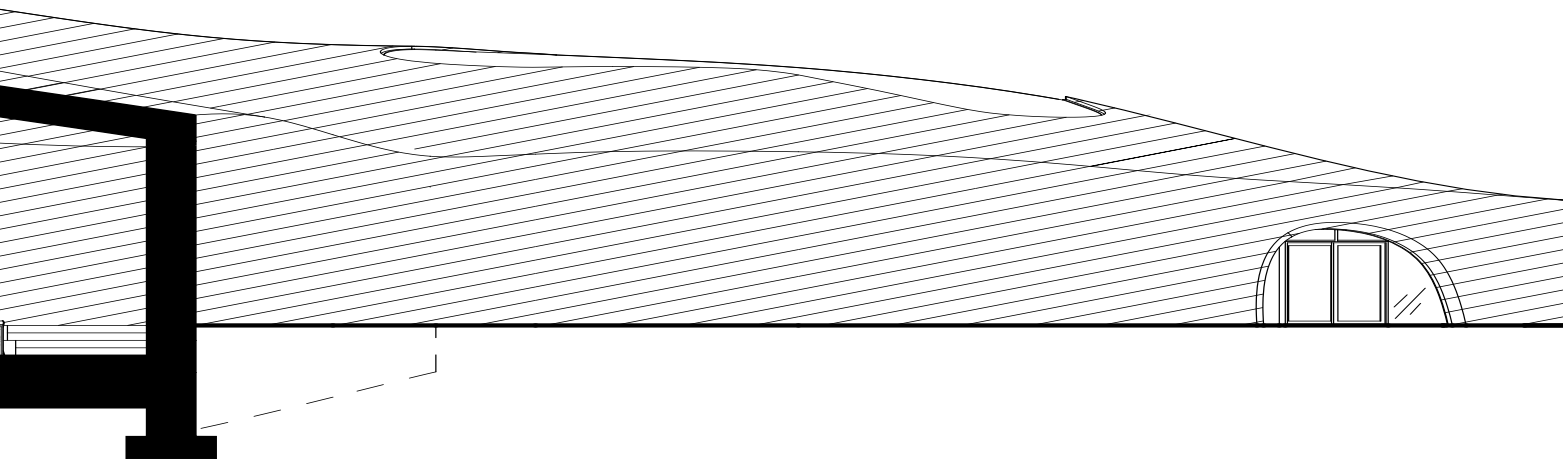
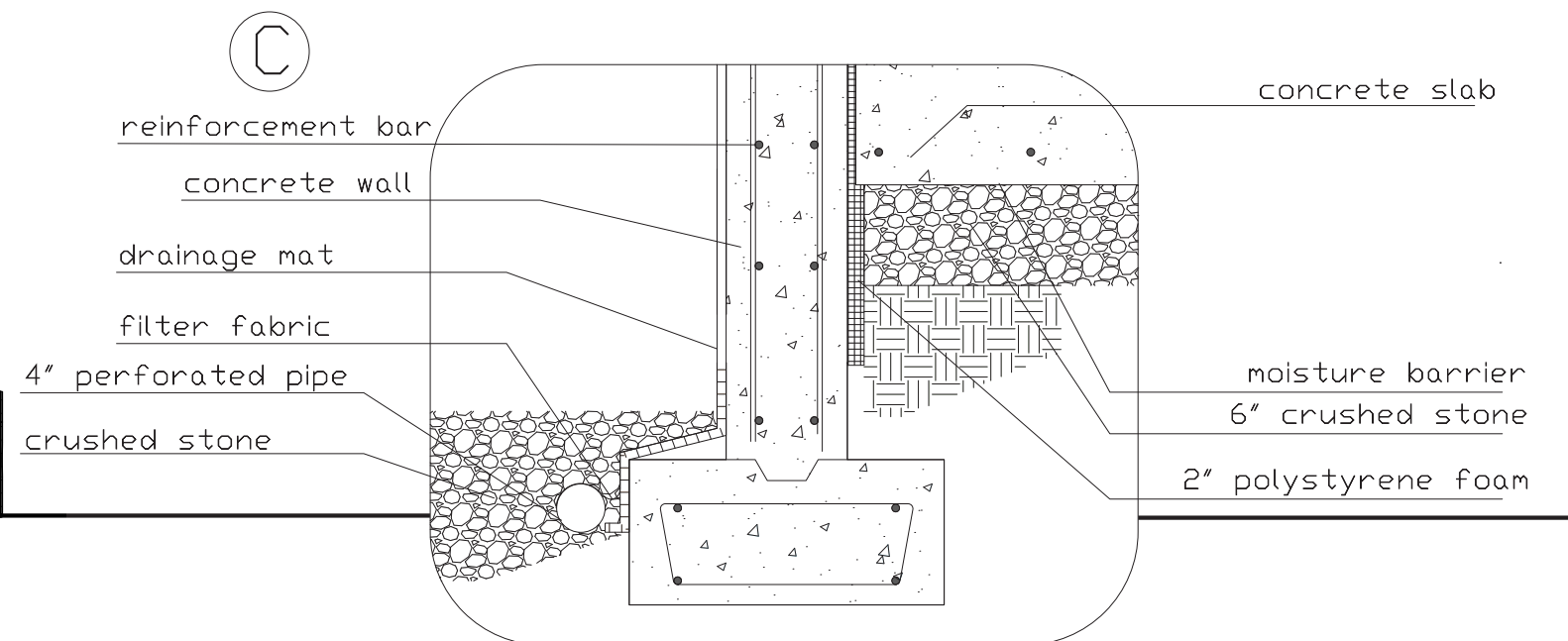
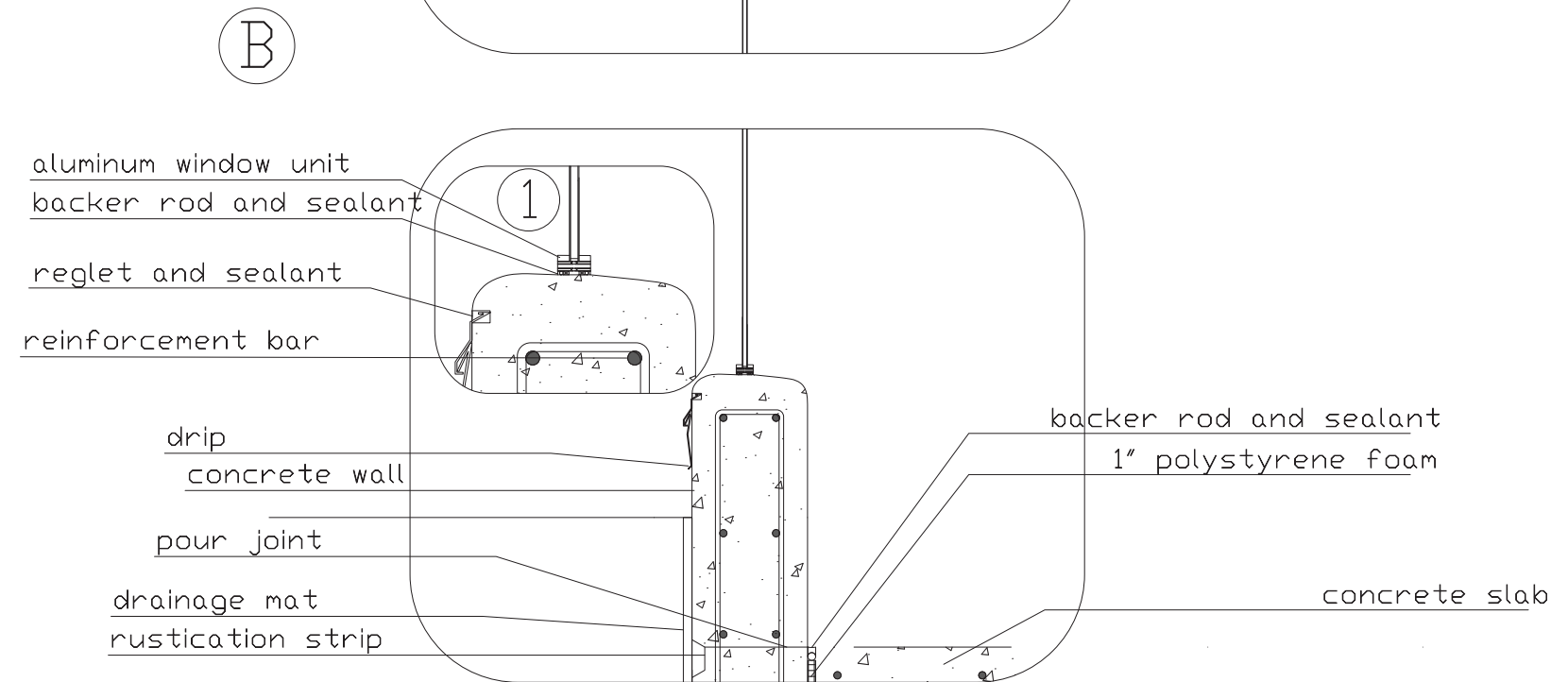
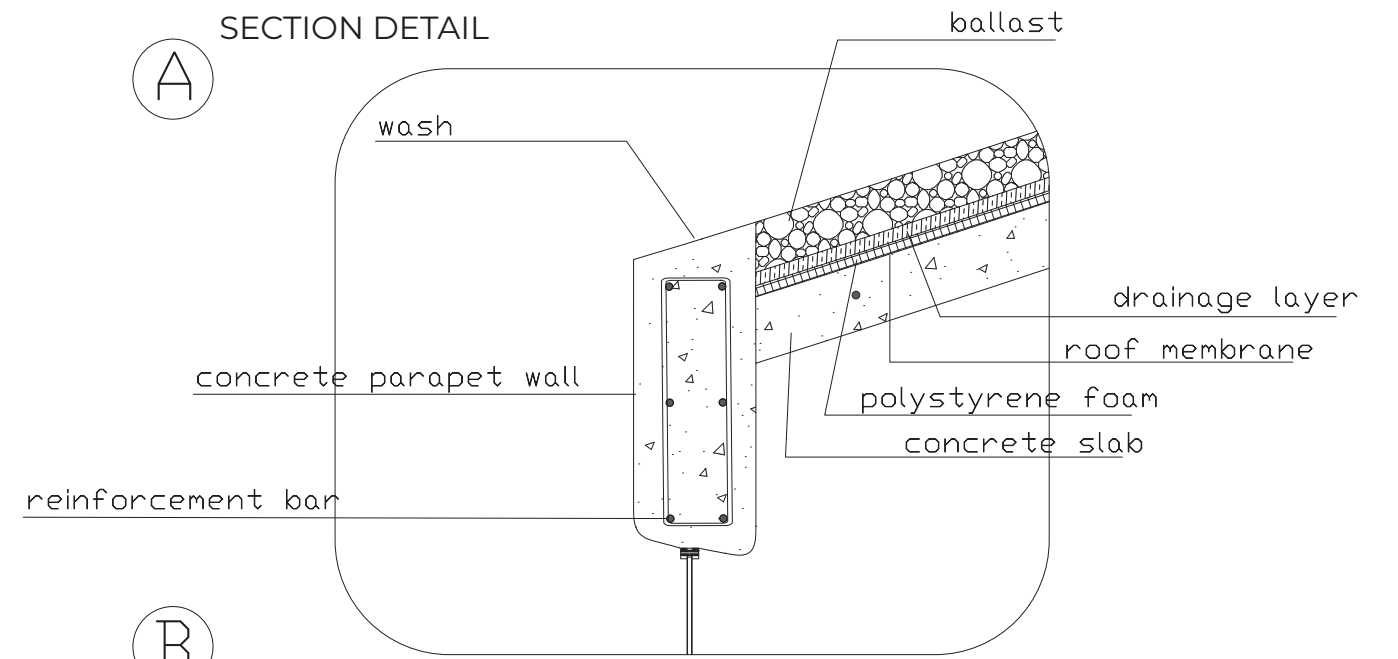
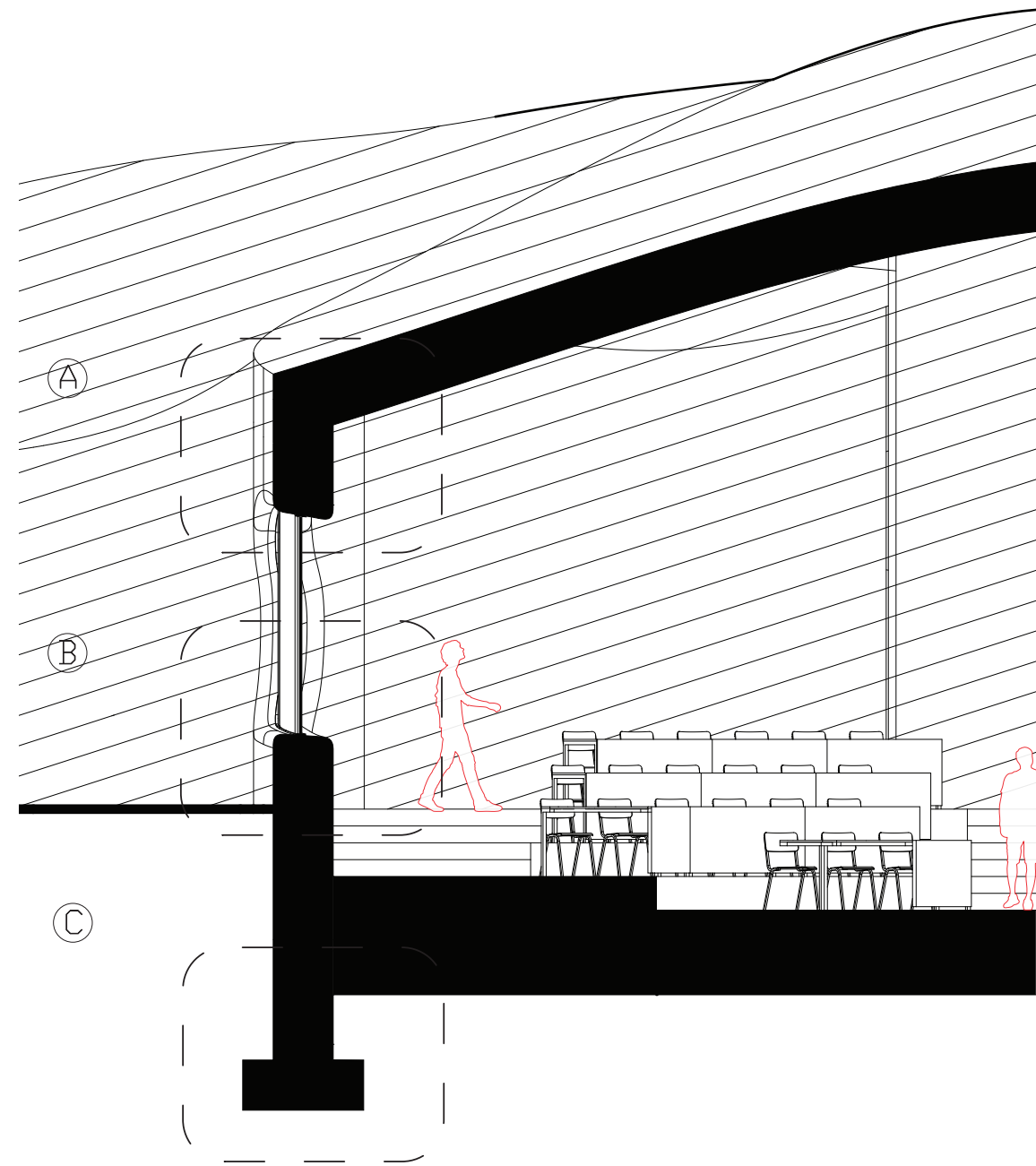
1. Rice Field

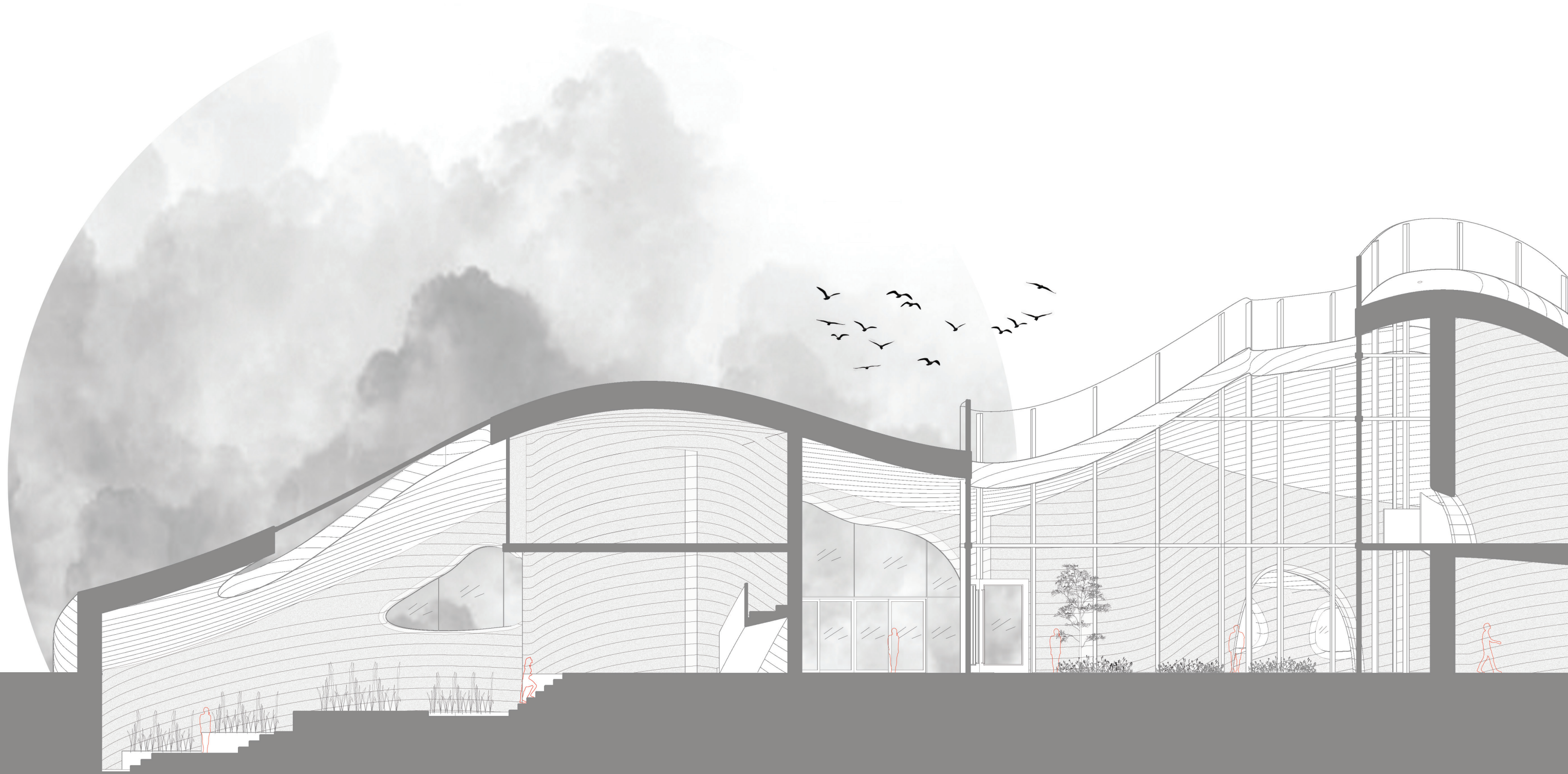


10. Lecture Hall

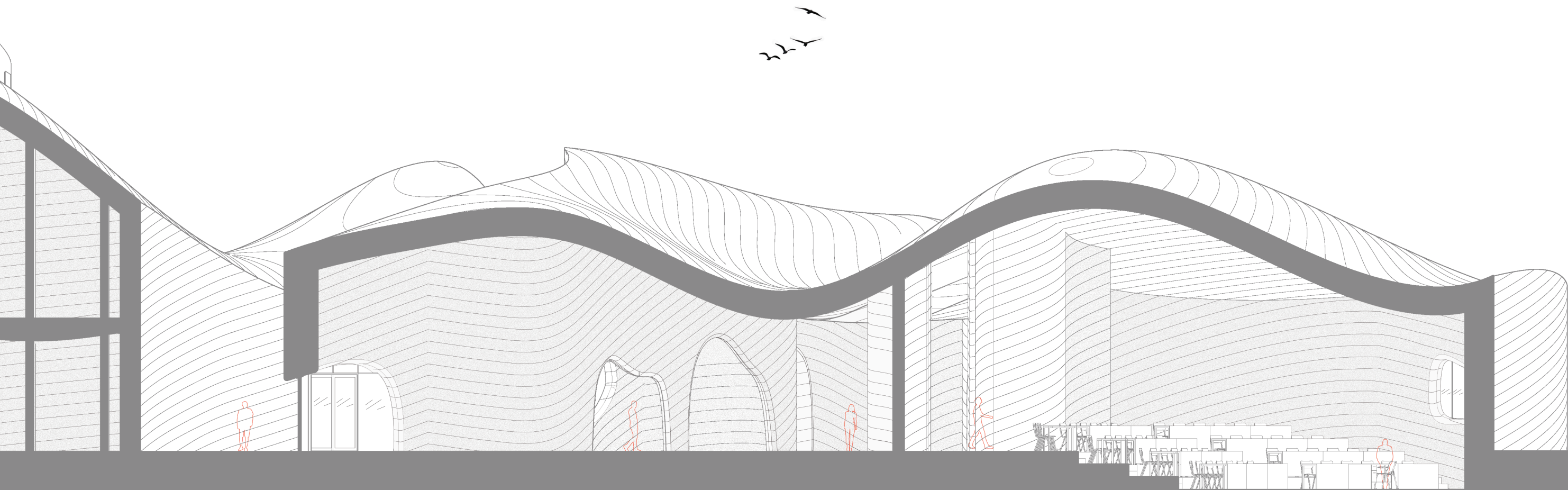
TRANSVERSE SECTION
SCALE = 1/8"

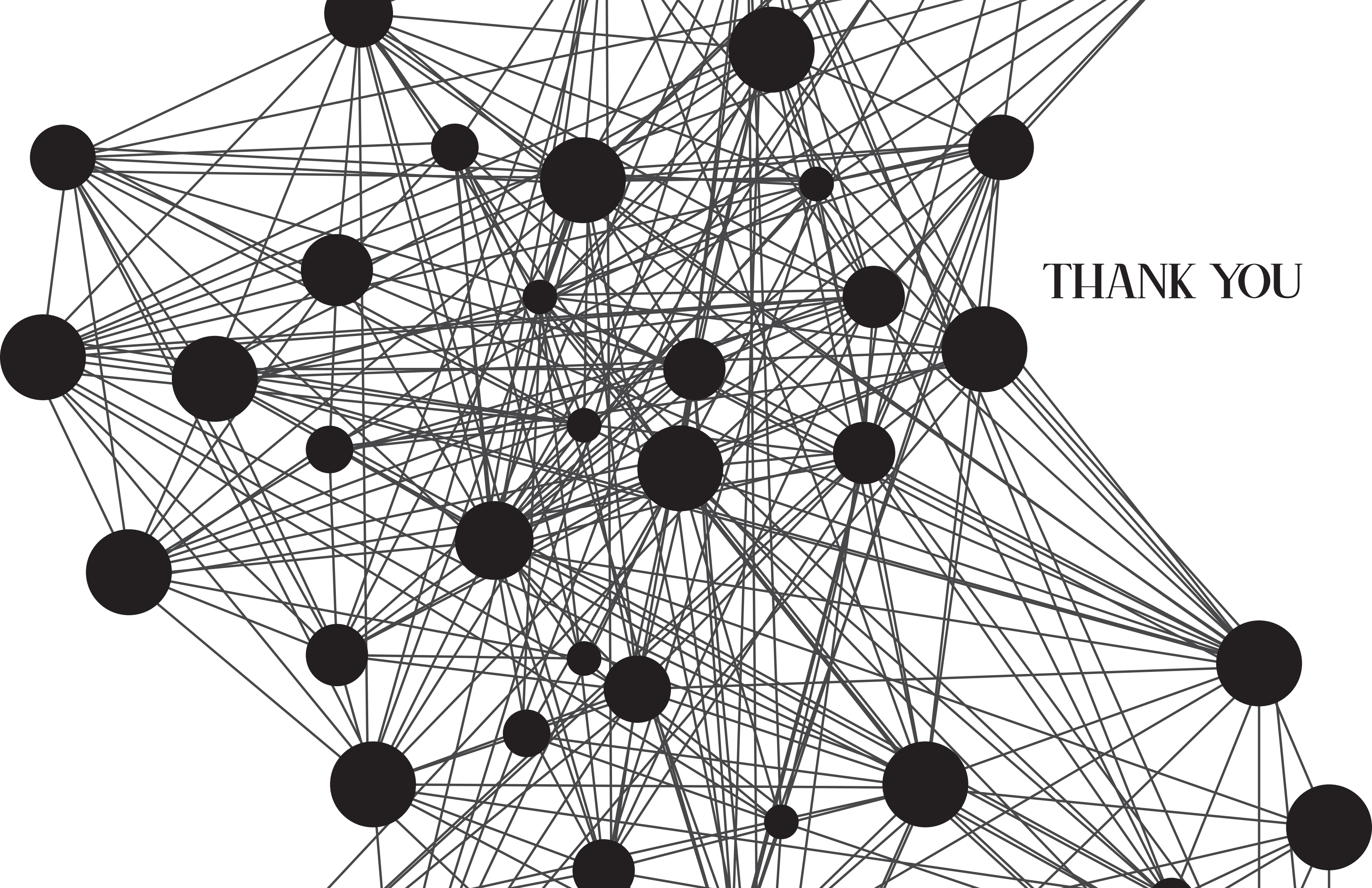






LONGITUDINAL SECTION
SCALE = 1/8"





THANK YOU