

Having trouble viewing this email? [Click here](#)

February/2011

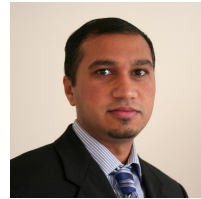


## Newark and Suburban Architects e-Rostrum

A Section of AIA New Jersey

AIA New Jersey is a Chapter and Region of the American Institute of Architects

### Message From the President



In between snowfalls last month I had the opportunity to attend three formal AIA dinners throughout the state. On January 8<sup>th</sup> I attended the AIANJ Awards Dinner held at the Carl Icahn Laboratory at Princeton University honoring the 2010 Design Awards winners, the 2010 Service Award winners as well the new AIANJ board. I was glad to see some of our AIANS section members represented. David Delvecchio, AIA was awarded Architect of the Year. John Cwikla, AIA earned the Intern Architect of the Year and Hugh Boyd, AIA won an Interior Architecture design award. Congratulations to all the winners.

On Jan 15<sup>th</sup> I attended the Architect's League Installation dinner at Montclair University honoring Ben Lee, AIA as their incoming President.

And of course on January 22<sup>nd</sup> I was at our own Past President's Banquet at the High Lawn Pavilion in West Orange honoring our Immediate Past President, Judy Donnelly, AIA. It was a fabulous event hosted by Chris Stone, AIA during which the new AIANS board was installed by our Regional Director, Jerry Eben, AIA, Seth Leeb, AIA was awarded the Herman C. Litwack Award and John Cwikla, AIA won the Carleton B. Riker Assoc. AIA Award. For those that did not go to one of these events I encourage you to take part in at least one in the coming year. You will not be disappointed.

Although I had a great time attending the three dinners in January, I think I have had my fill of parties for a while. I look forward to getting down to business in the coming months. We have Grassroots coming up in the first week of February. We also have our first General Meeting on Feb. 16<sup>th</sup> featuring Slade Architects as our speaker. Don't forget to sign up on our [webpage](#).

Issue: 2

#### In This Issue

[Message from the President](#)

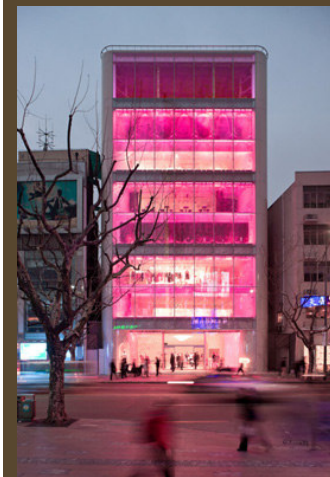
[The Past Presidents Banquet](#)

[Associate Awareness Campaign](#)

[General Meeting #1](#)

#### General Meeting # 1

February 16  
Mayfair Farms



#### Slade Architecture: Recent Projects

Founded in 2002 Slade Architecture seeks to focus on architecture and design across different scales and program types. Their design approach is unique for each project but framed by a continued exploration of primary architectural concerns and a thorough investigation of their context.

They have completed a diverse range of international and domestic projects and their work has

I would like to thank the AIANS members that came to our first board meeting in January per our requests for more volunteers. We already have some of them in committees of their interests. I welcome others who are interested in volunteering to attend our next [board meeting](#) in February. We are still short in areas like the Rostrum Committee which oversees the development of our newsletter and its content. I know architects love to write and express their opinions. So why aren't we getting any articles written by our members? Please submit your stories, articles, or happenings that may interest our membership and we will feature it in our next issue of the eRostrum. If you would like to volunteer or want to submit an article please email [Julie Pagnotta](#).

Thank you,

[Yogesh Mistry, AIA](#)  
AIANS President, 2011

*See the Difference Quality Makes<sup>®</sup>*  
with Kolbe<sup>®</sup> windows and doors

**KOLBE**  
■ WINDOWS & DOORS ■

*Large selection of wood,  
aluminum clad, and  
vinyl windows & doors*



18 Muller Road, Oakland, NJ 07436 • fax 201-337-7464 • [www.gardenstatemillwork.com](http://www.gardenstatemillwork.com)



been recognized internationally with over 200 publications, exhibits and awards. In 2010 alone, they were recognized with an Award for Design Excellence in Public Architecture by the New York City Public Design Commission, a national AIA Small Project Award, a Best of the Year Awards from Interior Design Magazine, and multiple Store-of-the-Year awards. Slade Architecture was also one of the Architectural League of New York's "2010 Emerging Voices". Current projects include a 500,000 SF residential development in Williamsburg; a zoo renovation in Staten Island; two freestanding residences, one in China, the other in Pennsylvania; and the renovation of HELP/Family Residence Housing Complex in Brooklyn. Recently completed projects include the Barbie Store Shanghai (pictured above) and Aperture Foundation Headquarters.

**James Slade** has a Bachelor of Arts from Cornell University and a Masters of Architecture from Columbia University where he was awarded an Honor Award for Excellence in Design upon graduation. In addition to his work at Slade Architecture, James currently teaches a graduate level architecture studio at Parsons School of Design and has taught in the past at Barnard/Columbia University, Pratt Institute, Florida International University and Philadelphia University.

The Past Presidents Banquet

Our 2010 President Judith Donnelly, AIA, was honored with spirit and sophistication at the Past President's banquet on January 22 at the Highlawn Pavilion in West Orange. Situated atop a significant geographic plateau, the pavilion displays a scintillating view across the region from its main banquet hall, with the New York skyline lighting up the distance. The elongated rectangular shape of the banquet hall put this view on display for every seat in the room.

A generous spread of hors d'oeuvres was enjoyed before dinner as guests mingled and took pleasure in the service of the Pavilion. Entertainment including a singer and saxophonist was provided by the band Fantasy Seven, and many attendees took advantage of the opportunity for dancing.

2009 Past President Christopher Stone, AIA, elegantly led the evening as master of ceremonies. Our Past Presidents were recognized, and generous sponsors highlighted. The events held by the section in 2010 were reviewed, showing a strong group of members committed to the profession.

Jerome Leslie Eben, AIA, current AIA NJ Regional Director, recognized the 2010 Newark & Suburban officers and trustees, and presided over the installation of the 2011 Board of Officers and Trustees. 2011 Officers include Yogesh Mistry, AIA, *President*; Kevin McCormick, AIA, *President Elect*; Louise Addonizio, AIA, *First Vice President*; Lisa San Filippo, AIA, *Secretary*; John A. Cwikla, AIA, *Treasurer*; and last but not least, Judith A. Donnelly, AIA, *Past President*. 2011 Trustees include Alok Saksena, Assoc. AIA, and Mitch Schaefer, Allied Member. 2012 Trustees include Stephen Rooney, AIA. 2013 Trustees include Christy DiBartolo, AIA; Ricardo Soares, Assoc. AIA; Christopher Stone, AIA; and Natasha Suzansky, AIA.

The Carleton B. Riker Associate Emeritus AIA Honor Award for an Associate member was awarded to John Cwikla, AIA. Mr. Cwikla became licensed in 2010, and is continuing his support of associate members as chairperson of the AIA NJ Emerging Professionals Committee. The award was presented by the family of the late Carleton B. Riker, a lifelong exemplary associate member.

The Herman C. Litwack, FAIA Award for Service was presented to Seth A. Leeb, AIA for his outstanding longtime service to the AIA. Hugh A. Boyd, FAIA honored Mr. Leeb for his commitment, dedication, and contributions to our profession.

Incoming President Yogesh Mistry, AIA spoke to the audience about his goals for the coming year. He emphasized the importance of championing diversity. As an example, all AIA members in the audience of 120 attendees were asked to stand. Of the standing members in attendance, the following members were asked to remain standing: women, those under the age of 35, and individuals of descent other than Caucasian. The relatively small number still standing may have come as a surprise to many, as the proportion did not accurately reflect the diversity now present across the profession. Of course, not all members were in attendance that evening, but it was an effective reminder that we must all continue to encourage diversity within our

### Hayes Slade

brings an unusual, multi-faceted background to her design work. She has a Bachelor of Science (civil engineering) and a Master of Engineering (structures) from Cornell University as well as a Master of Business Administration degree from the Wharton School of Business. Prior to co-founding Slade Architecture, Hayes worked at Skidmore, Owings and Merrill, Arup (Structural Engineer, London and NY offices), Boston Consulting Group and Organic (Web Design).

[REGISTER](#) for this event.

### Upcoming Events

Feb 11-13

A.R.E. Structures Seminar

Feb 16

General Meeting #1

March 23

General Meeting # 2

[View ALL Upcoming Events](#)

### Employment Opportunity

Fletcher Thompson, a regional A/E firm, has an immediate opening at a client location in Newburgh, NY for a Job Captain with 7+ years experience, & highly skilled REVIT experience plus knowledge of MEP systems. Job requires databasing all Architectural and MEP systems into REVIT. Please send resume and cover letter to:  
Fletcher-Thompson Inc

membership.

In the closing speech of her Presidency, Judith Donnelly implored all attendees to sincerely consider volunteering. She described volunteering as a lofty tool, embedded with the power to better the world. Attendees were encouraged to volunteer with any organization that interests them. Past President Donnelly described her involvement with AIA as extremely rewarding, and expressed gratitude to all members for the opportunity to serve as President. Many members of the Donnelly family joined the Newark & Suburban section in support of Ms. Donnelly.

Submitted by Clair Wholean, Assoc. AIA  
Regional Associate Director 2011-2012.

Three Corporate Drive  
Shelton, CT 06484  
Attn: Connie Koch  
Fax: 203-225-6701  
ckoch@ftae.com

[www.fletcherthomson.com](http://www.fletcherthomson.com)

EOE M/F/D/V

## Associate Awareness Campaign

The Membership Committee has made a goal to increase associate membership by spreading awareness of the benefits AIA membership brings. One of AIA national's strategic initiatives this year is renewed support of emerging professionals. A new committee has been formed facilitate close collaboration between the Young Architects Forum, Emerging Professionals, and American Institute of Architecture Students. In our local section, the first thing we can do to align with this initiative is to welcome all of our young professionals, interns and recent college graduates as members. Many young architects do not join until they become licensed. The goal of this campaign is to increase associate membership within the organization in order to strengthen the next generation of architects. With your help, we can reach out and give these potential members a warm welcome.

- Encourage those you work with who may not be members yet to join.
- Share your personal experiences of what the AIA has done to enrich your career.
- Invite an intern to join you at the next section meeting.

Submitted by Clair Wholean, Assoc. AIA, Regional Associate Director  
2011-2012.

It is with sadness that AIA NS informs its members that Kenneth D. Wheeler, FAIA, Past President of AIA Newark and Suburban and Past Regional Director passed away on January 11, 2011 at the age of 93. He had been a member of the GRAD firm for 31 years, and had lived near one of his two daughters in Illinois in retirement. Donations may be made in his memory to Habitat for Humanity International, Americus, Georgia or Doctors Without Borders, PO Box 5030, Hagerstown, Maryland.

### Thank you to Our Sponsors

Pella Windows & Doors

Turner Construction  
Company

Garden State  
Millwork/Kolbe Windows &  
Doors

Extech Building Products

Armstrong World Industries





The advertisement is set against a dark blue background. On the left is a brochure cover for 'K&B CLASSICAL MOULDING'. The cover features a photograph of a large, multi-story house with a gabled roof and a porch. Text on the brochure includes 'Full 2010 - Volume 1', 'A new line of historically accurate moulding profiles available exclusively at Kaiken Brothers Company, Inc.', and 'www.kaikenbrothers.com/classical Since 1912'. To the right of the brochure, the text reads '65 NEW POPLAR MOULDING PROFILES' in a large, serif font, followed by '{ In Stock }' in a smaller, italicized font. Below this, a dark rectangular button contains the text 'Click Here for Details'. On the right side of the advertisement, a dark brown vertical sidebar contains the text 'Jaeger Lumber' and 'Benjamin Moore & Co.' in a white serif font.

[Forward email](#)



This email was sent to aiaadmin@verizon.net by [aiaadmin@verizon.net](mailto:aiaadmin@verizon.net) | [Update Profile/Email Address](#) | Instant removal with [SafeUnsubscribe™](#) | [Privacy Policy](#).

AIA NS | P.O. Box 43722 | Upper Montclair | NJ | 07043